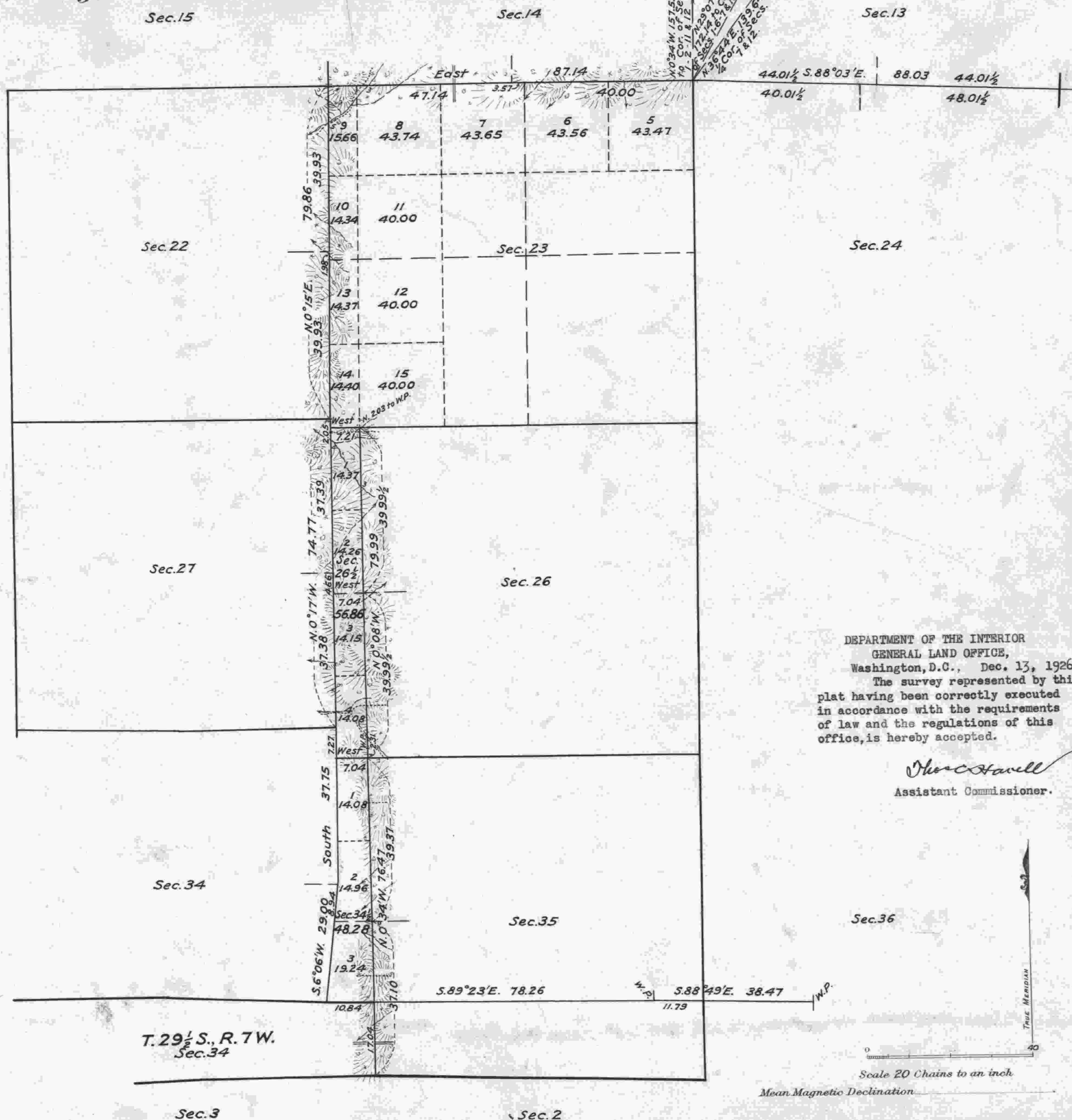


Township N^o 29 South, Range N^o 7 West of the Willamette Meridian, Oregon.



DEPARTMENT OF THE INTERIOR
GENERAL LAND OFFICE,
Washington, D.C., Dec. 13, 1926.
The survey represented by this
plat having been correctly executed
in accordance with the requirements
of law and the regulations of this
office, is hereby accepted.

Thorst Hall
Assistant Commissioner.

Surveys Designated	By Whom Surveyed	Group			Amount of Surveys		When Surveyed	
		No.	Date	Mls.	chs.	acs.	Began	Completed
Subdivisions	Fred Mensch U.S.C.E.	109	Feb. 25, 1924	4	75	44	May 6, 1924	Sept. 19, 1924
Miscellaneous	" " "	"	" " "	7	13	62	" " "	" " "
Exteriors	" " "	"	" " "	1	42	93	" " "	" " "

The above map of Township No. 29 South, Range No. 7 West of the Willamette Meridian, Oregon, is strictly conformable to the field notes of the survey thereof which have been examined and approved.

Office of U.S. Supervisor of Surveys,
Denver Colorado, Feb. 15, 1926.

Montgomery Johnson
U.S. Supervisor of Surveys.

sh.sch
10/10