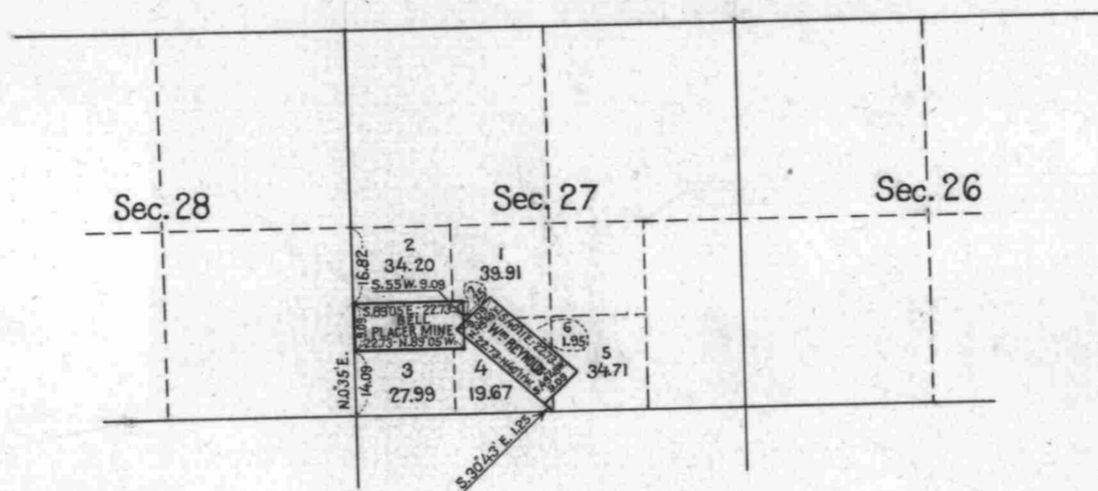


Township No 29 South Range No 7 West of the Willamette Meridian, Oregon.



The above Tracing showing change in areas and lottings in Section 27, Twp. 29 S. R. 7 W. Will. Mer. Oregon consequent upon platting segregation surveys made by Eugene Schiller under instructions contained in Commissioner's Letter N dated November 23, 1897 to the Register and Receiver of the U.S. Land Office at Roseburg Oregon, is strictly to the field notes of the survey thereof on file in this Office which have been examined and approved, and that it properly describes the land to be segregated in accordance with Commissioner's Letter N dated November 27, 1897. Surveyor-General's Office. Portland, Oregon July 30th, 1898. } Robert A. Nabersham, Sur. Gen. for Oregon.

See Book No. 43
Mineral Surveys
p-37-54

I certify the above to be a correct copy of the original tracing on file in this Office.
U. S. Surveyor General's Office
Portland, Oregon December 17, 1921.

Wesley W. Carviss
Surveyor General of Oregon.

Scale 40 Chains to an inch
Mean Magnetic Declination

Surveys Designated	By Whom Surveyed	Group		Amount of Surveys			When Surveyed	
		No.	Date	Mls.	chs.	lks.	Begun	Completed

The above map of Township No. _____ Range No. _____ of the _____ Meridian _____ is strictly conformable to the field notes of the survey thereof on file in this office, which have been examined and approved.

U. S. Surveyor General's Office.

Surveyor General.