

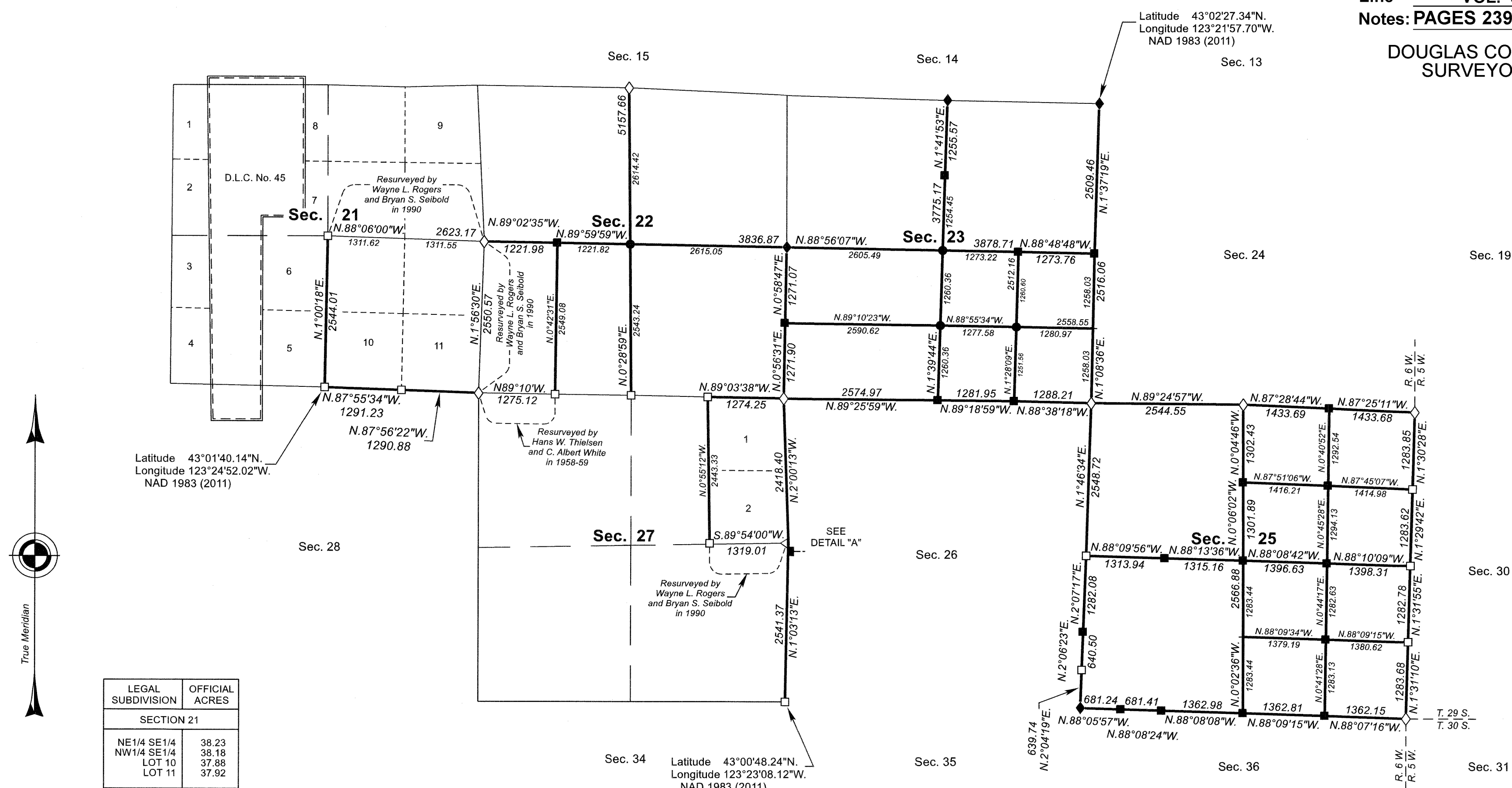
TOWNSHIP 29 SOUTH, RANGE 6 WEST, OF THE WILLAMETTE MERIDIAN, OREGON

DEPENDENT RESURVEY AND SUBDIVISION OF SECTIONS 22, 23, AND 25

FILED
Date: 5/4/2022 By: JC
This survey consists of:
Map: T29-6 2021-1
Line: VOL. 59
Notes: PAGES 23989-24032

DOUGLAS COUNTY
SURVEYOR

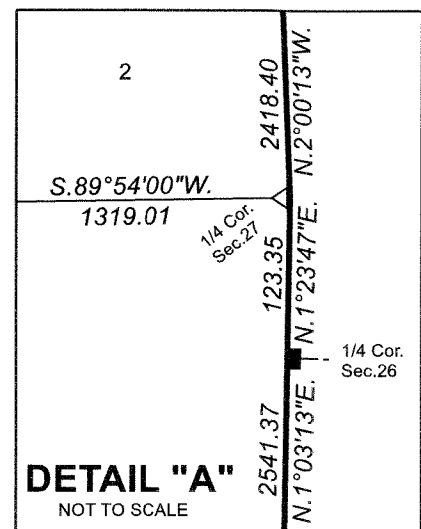
OFFICIALLY FILED: 3/21/2022



LEGAL SUBDIVISION	OFFICIAL ACRES
SECTION 21	
NE1/4 SE1/4	38.23
NW1/4 SE1/4	38.18
LOT 10	37.88
LOT 11	37.92
SECTION 22	
NW1/4 SW1/4	36.15
SW1/4 SW1/4	36.99
SECTION 23	
SW1/4 SW1/4	37.62
SE1/4 SW1/4	37.44
SW1/4 SE1/4	36.90
SECTION 25	
NW1/4 NE1/4	42.42
NE1/4 NW1/4	38.15
NW1/4 NW1/4	37.73
SW1/4 NW1/4	38.35
SE1/4 NW1/4	38.77
SE1/4 SE1/4	40.40
SECTION 27	
LOT 1	35.82
LOT 2	36.51
TOTAL AREA	645.46
FEDERAL INTEREST LAND RESURVEYED	

LEGEND

- ◇ Original corner previously remonumented
- ◆ Original corner remonumented this survey
- Corner previously established or reestablished
- Corner previously established or reestablished; remonumented this survey
- Corner established or reestablished this survey
- + Corner point calculated, no monument set



A history of surveys, corner descriptions, and other relevant information are contained in the field notes.

This plat represents of the dependent resurvey of portions of the east boundary, subdivisional lines, and subdivision of section lines of sections 21 and 27, designed to restore the corners in their true original locations according to the best available evidence, and the subdivision of sections 22, 23, and 25, Township 29 South, Range 6 West, Willamette Meridian, Oregon.

Official areas based on the measurements of this survey have been returned for Federal interest land where indicated. Aliquot part legal subdivisions retain their aliquot characteristics and refer to precisely the same land as that which was previously identified by its original survey or description. A lot can only be subdivided by survey or supplemental plat. Except as indicated hereon, the lottings and areas are as shown on the plats approved March 9, 1855, June 30, 1863, and October 1, 1872, and accepted March 1, 1961, and March 21, 1994.

UNITED STATES DEPARTMENT OF THE INTERIOR
BUREAU OF LAND MANAGEMENT

Portland, Oregon

This plat is strictly conformable to the approved field notes, and the survey, having been correctly executed in accordance with the requirements of law and the regulations of this Bureau, is hereby accepted.

For the Director
Mary J. M. Hatch
Chief Cadastral Surveyor of Oregon

December 21, 2021

Date

Survey executed by Jeffrey O. Covington, Cadastral Surveyor, beginning June 11, 2019, and completed September 24, 2019, pursuant to special instructions approved May 16, 2019, for Group No. 2940, Oregon.

