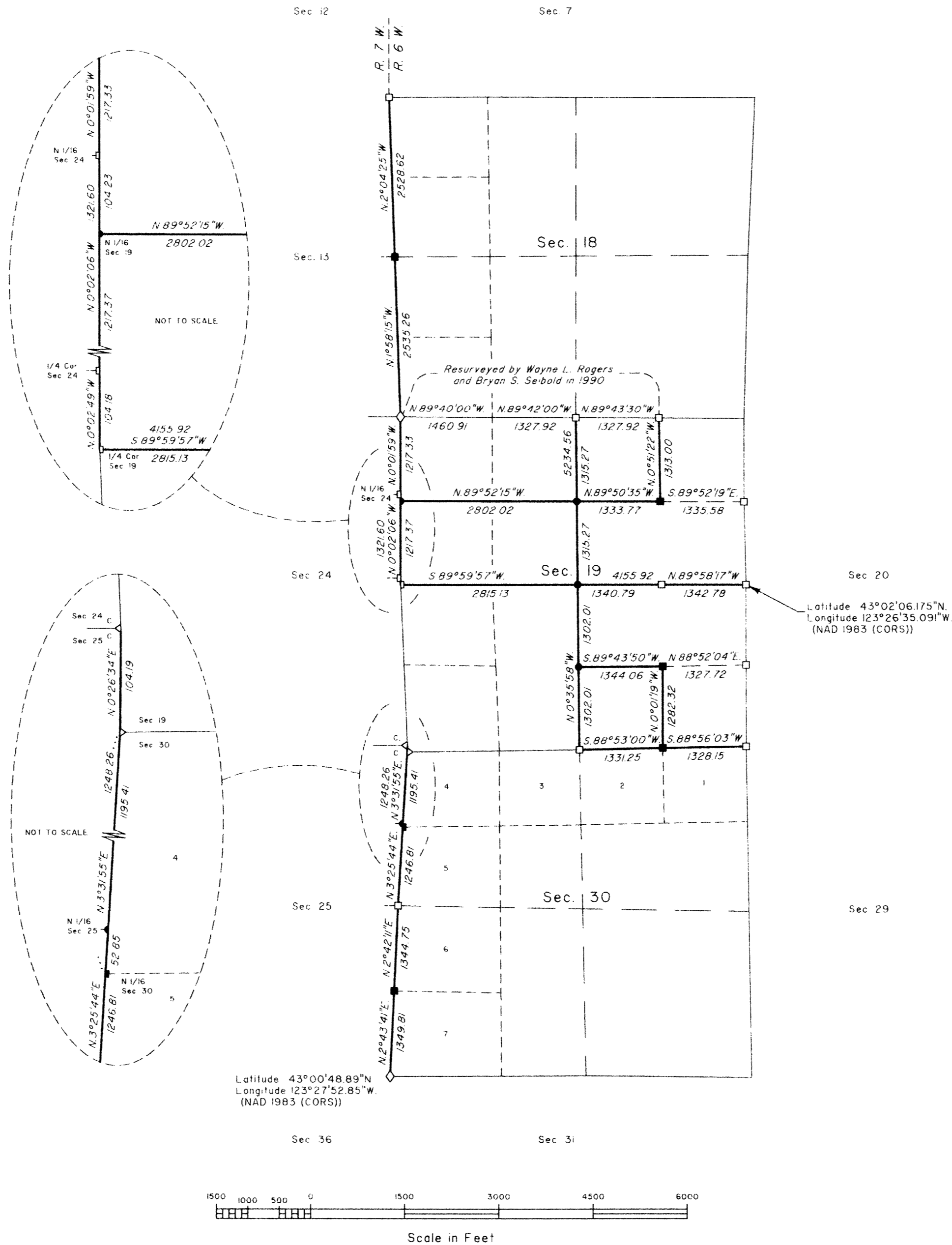
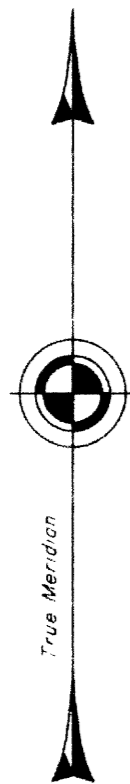


TOWNSHIP 29 SOUTH, RANGE 6 WEST, OF THE WILLAMETTE MERIDIAN, OREGON

DEPENDENT RESURVEY AND SUBDIVISION OF SECTION 19

FILED
 Date: 1/17/2012 By: JC
 This survey consists of:
 Map: 2011-2
 Narrative: VOL. 57
 Corner Rpt: PGS 22715-22736
 DOUGLAS COUNTY
 SURVEYOR

LEGAL SUBDIVISION	OFFICIAL ACRES
SECTION 19	
NW 1/4 NE 1/4	40.14
NE 1/4 NW 1/4	40.19
NW 1/4 NW 1/4	44.41
SW 1/4 SE 1/4	39.68



A history of surveys is contained in the field notes.

This plat represents the dependent resurvey of a portion of the west boundary and subdivisional lines, T. 29 S., R. 6 W., Willamette Meridian, Oregon, designed to restore the corners in their true original locations according to the best available evidence, and the subdivision of section 19.

Actual quantity acreages have been returned for Federal interest lands where indicated. Changes in the official acreages of land described by aliquot part or lot number do not alter its description. Further subdivision of aliquot parts shall be in accordance with the Manual. Further subdivision of official lots may only be by supplemental plat or official survey. Official acreage and lot designations of Federal interest lands not affected by this survey are as shown on the plat approved March 9, 1855, October 1, 1872, and December 16, 1878.

This survey was executed by Kenneth W. Saveland, Cadastral Surveyor, beginning May 21, 2009, and completed August 27, 2009, pursuant to Special Instructions dated April 28, 2009 under Group Number 2270, Oregon.

Timber in this area consists of alder, ash, cedar, chinquapin, fir, madrone, maple, oak and pine.

LEGEND

- ◊ Original corner previously remonumented
- Corner previously established or reestablished
- Corner previously established or reestablished; remonumented this survey
- Corner established or reestablished this survey

UNITED STATES DEPARTMENT OF THE INTERIOR
 BUREAU OF LAND MANAGEMENT

Portland, Oregon

This plat is strictly conformable to the approved field notes, and the survey, having been correctly executed in accordance with the requirements of law and the regulations of this Bureau, is hereby accepted.

For the Director

Mary J. M. Hunt

Chief Cadastral Surveyor of Oregon

October 3, 2011

Date