

FILED
Date: 5/17/2011 By: JC
This survey consists of:
Map: T29S R6W 2011
Narrative: VOL 56
Corner Rpt: PGS 22275-76

TOWNSHIP 29 SOUTH, RANGE 6 WEST, OF THE WILLAMETTE MERIDIAN, OREGON

SHEET 1 OF 2

RETRACEMENT

This plat represents the entire record of the retracement of a portion of the subdivisional lines and subdivision-of-section lines of section 31, T. 29 S., R. 6 W., Willamette Meridian, Oregon and designed to restore the corners in their true original locations according to the best available evidence.

A history of surveys pertaining to this retracement is as follows:

In 1878, H. G. Hurlburt, U.S. Deputy Surveyor, surveyed a portion of the subdivisional lines.

In 1905, Fred Mensch, U.S. Deputy Surveyor, surveyed the remainder of the subdivisional lines.

In 1958-59, Hans W. Thielsen, and C. Albert White, Cadastral Surveyors, resurveyed a portion of the south boundary and subdivisional lines.

In 1980, Wayne L. Rogers, Cadastral Surveyor, resurveyed a portion of the south and west boundaries and subdivisional lines, and subdivided section 31.

The direction of the lines are based on the true meridian as determined by a combination of direct solar observations and Global Positioning System (GPS) measurements.

The retracement data were thoroughly verified and only the true line data are given hereon. Only those lines bounding or crossing public land were blazed.

An analysis of the unadjusted field data assured a closure not exceeding 1:4000 in error. Measured distances and directions have been adjusted by computer software that incorporates a least squares adjustment routine. The adjusted bearings and distances are reported to the nearest second and 0.01 foot.

The lottings and areas are as shown on the plat approved June 29, 1906.

The geodetic position shown hereon for the cor. of secs. 29, 30, 31, and 32, was determined by direct occupation utilizing dual frequency, carrier phase GPS receivers relative to the National Spatial Reference System.

The geodetic position shown hereon for the center E 1/16 section corner of sec. 31 was determined by a tie from a temporary control point, established utilizing dual frequency, carrier phase GPS receivers relative to the National Spatial Reference System.

Each new bearing tree has a 2 1/2 inch x 1/4 inch magnetic nail (Mag Nail) driven at the base on right side center, unless otherwise noted in the corner description.

This survey was executed by Kenneth W. Saveland, Cadastral Surveyor, beginning August 31, 2009, and completed September 9, 2009, in accordance with the specification set forth in the Manual of Surveying Instructions, 1973; pursuant to Special Instructions dated March 16, 2007, approved March 21, 2007, which provided for the survey included under Group Number 2300, Oregon, Administrative File Number 0904, and Assignment Instructions dated August 25, 2009. He was assisted by Robert NMI Durning, Joel R. Herzberg, Thomas A. Hollamon, Survey Technicians.

UNITED STATES DEPARTMENT OF THE INTERIOR
BUREAU OF LAND MANAGEMENT

Portland, Oregon

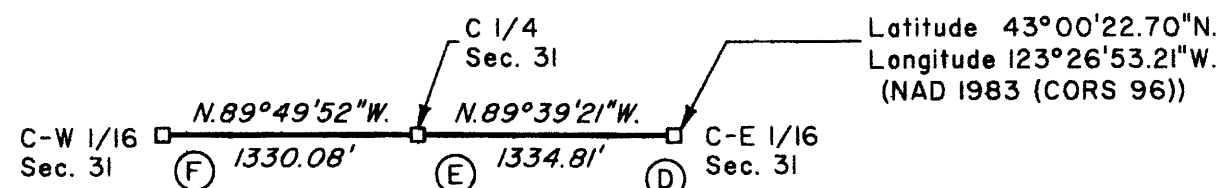
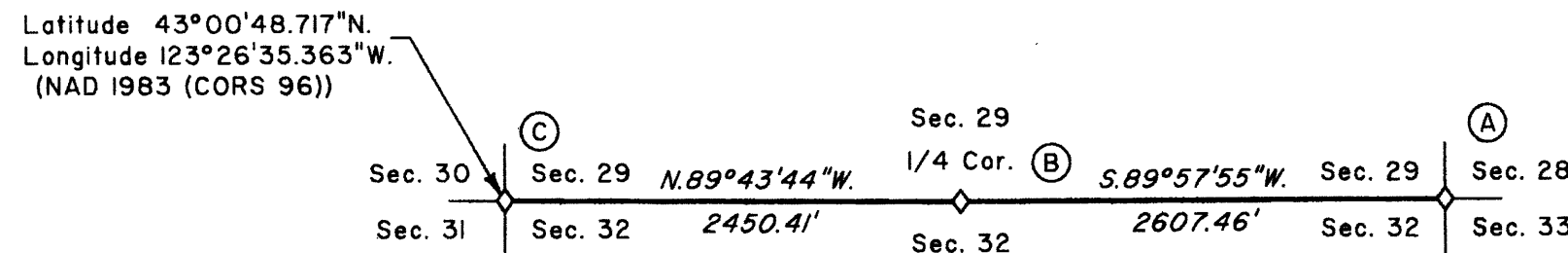
The retracement represented by this plat, having been correctly executed in accordance with the requirements of law and the regulations of this Bureau, is hereby accepted.

For the Director

Chief Cadastral Surveyor of Oregon

March 2, 2011

Date

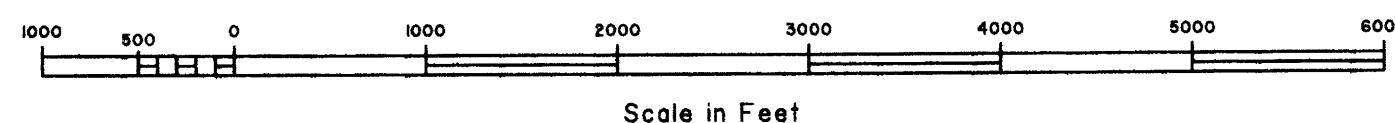


LEGEND

- ◊ Original corner previously remonumented
- Corner previously established or reestablished

I, Kenneth W. Saveland, Cadastral Surveyor, HEREBY CERTIFY upon honor, that in pursuance of Special Instructions bearing date of the 16th day of March, 2007, I have retraced a portion of the subdivisional lines and subdivision-of-section lines of section 31, Township 29 South, Range 6 West, Willamette Meridian, Oregon, which is represented upon this plat as having been executed by me and under my direction. Said retracement has been made in strict conformity with said Special Instructions, the Manual of Instructions for the Survey of the Public Lands of the United States, 1973, and in specific manner described upon this plat.

Kenneth W. Saveland
Cadastral Surveyor
FEBRUARY 22, 2011
Date



OFFICIALLY FILED: 5/17/2011

TOWNSHIP 29 SOUTH, RANGE 6 WEST, OF THE WILLAMETTE MERIDIAN, OREGON

SHEET 2 OF 2

RETRACEMENT

(A) The cor. of secs. 28, 29, 32, and 33, established by Hurlburt in 1878, perpetuated by Mensch in 1905, subsequently perpetuated by Thielsen and White in 1958, monumented with an iron post, 2 1/2 ins. diam., firmly set, projecting 6 ins. above ground, with brass cap mkd.

T 29 S R 6 W
S 29 S 28
S 32 S 33
1958

from which the remains of an orig. bearing tree

A fir, 35 ins. diam., bears N. 50° E., 10.6 ft. dist., with no marks visible. (Record 13.9 ft.)

from which the remains of bearing trees mkd. by Mensch, reported by Thielsen and White

A madrone, 24 ins. diam., bears N. 25° E., 29.0 ft. dist., with no marks visible.

A madrone, 28 ins. diam., bears S. 26° E., 29.0 ft. dist., with no marks visible on a partially healed blaze.

A sawed fir stump, size indeterminate, bears S. 62 3/4° W., 42.9 ft. dist., with scribe marks T29S R6W S32 BT visible on an open blaze. (Record S. 66° W., not reported by Thielsen and White)

A chinquapin, 17 ins. diam., bears N. 46 3/4° W., 36.6 ft. dist., with fragmentary scribe marks visible on a partially healed blaze. (Record N. 44° W., 35.0 ft.)

and bearing trees mkd. by Thielsen and White

A cedar, 24 ins. diam., bears N. 64 3/4° E., 40.9 ft. dist., with a healed blaze. (Record, N. 75° E.)

A fir, 29 ins. diam., bears N. 37 1/2° W., 31.0 ft. dist., with scribe marks T29S R6W S29 BT visible on bark blaze.

and a new bearing tree

A cedar, 10 ins. diam., bears S. 46 3/4° W., 33.6 ft. dist., mkd. T29S R6W S32 BT.

(B) The 1/4 sec. cor. of secs. 29 and 32, established by Mensch in 1905, perpetuated by John H. Markham, Jr., Registered Engineer No. 2880, in 1956, filed in the Douglas County Surveyor's Office, C. S. File No. 42/190, subsequently perpetuated by James W. Byron, Deputy County Surveyor, in 1962, monumented with an iron post, 1 1/4 ins. diam., firmly set, projecting 10 ins. above ground, with brass cap mkd.

T 29 S R 6 W
S 29
1/4 S 32
1962

from which the remains of an orig. bearing tree

A sawed, decayed cedar stump, size indeterminate, bears S. 55° W., 26.4 ft. dist., with no marks visible.

and the remains of bearing trees mkd. by Markham, Jr., Registered Engineer No. 2880

A fir, 47 ins. diam., bears N. 78 1/4° E., 59.7 ft. dist., with no marks visible on bark blaze.

A chinquapin, 22 ins. diam., bears S. 48 3/4° E., 15.4 ft. dist., with a healed double blaze.

A sawed madrone stump, 12 ins. diam., bears S. 26 1/4° W., 32.2 ft. dist., with no marks visible.

(C) The cor. of secs. 29, 30, 31, and 32, established by Mensch in 1905, perpetuated by John H. Markham, Jr., Registered Engineer No. 2880, in 1956, filed in the Douglas County Surveyor's Office, C. S. File No. 42/190, in 1956, subsequently perpetuated by Rogers in 1980, monumented with an iron post, 2 1/2 ins. diam., firmly set, projecting 4 ins. above ground, (alongside of which is the orig. basalt stone, 15 x 12 x 8 ins., loosely set, projecting 9 ins. above ground, with 5 notches on SE. edge and 1 notch on SW. edge) with brass cap mkd.

T 29 S R 6 W
S 30 S 29
S 31 S 32
1980

from which the remains of the orig. bearing trees

A sawed, decayed fir stump, 26 ins. diam., bears N. 72° E., 17.8 ft. dist., with no marks visible.

A decayed fir stump, size indeterminate, bears S. 42° E., 4.6 ft. dist., with no marks visible.

A sawed fir stump, 5 ft. tall, 12 ins. diam., bears S. 86° W., 7.3 ft. dist., with a healed blaze.

and the remains of bearing trees mkd. by Markham, Jr., Registered Engineer No. 2880, reported by Rogers

A sawed, decayed madrone stump, size indeterminate, bears S. 12° W., 23.8 ft. dist., with no marks visible.

A sawed, decayed madrone stump, size indeterminate, bears N. 23° W., 35.0 ft. dist., with no marks visible.

and the remains of bearing trees mkd. by Rogers

A sawed fir stump, 5 ft. high, 16 ins. diam., bears N. 20 1/2° E., 19.1 ft. dist., with a healed blaze.

A sawed cedar stump, 6 ft. high, 22 ins. diam., bears S. 29° W., 9.9 ft. dist., with a healed blaze.

A sawed cedar stump, 6 ft. high, 21 ins. diam., bears N. 73 1/2° W., 16.2 ft. dist., with a healed blaze.

and new bearing trees

A cedar, 11 ins. diam., bears N. 61 1/4° E., 44.5 ft. dist., mkd. T29S R6W S29 BT.

A cedar, 10 ins. diam., bears S. 28 3/4° E., 16.0 ft. dist., mkd. T29S R6W S32 BT.

A cedar, 22 ins. diam., bears S. 54° W., 91.1 ft. dist., mkd. T29S R6W S31 BT.

A cedar, 10 ins. diam., bears N. 57° W., 48.9 ft. dist., mkd. T29S R6W S30 BT.

Bury the orig. stone alongside the iron post.

(D) The center E 1/16 sec. cor. of sec. 31, established by Rogers in 1980, monumented with an iron post, 2 1/2 ins. diam., firmly set, projecting 2 ins. above ground, with brass cap mkd.

E 1/16
C S 31
1980

from which bearing trees mkd. by Rogers

A fir, 14 ins. diam., bears N. 23 1/4° E., 4.3 ft. dist., with a healed blaze.

A yew snag, 11 ins. diam., bears S. 64° W., 14.9 ft. dist., with scribe marks CE 1/16 S31 BT visible on a partially healed blaze.

and a new bearing tree

A fir, 19 ins. diam., bears S. 81 3/4° E., 19.1 ft. dist., mkd. X BT.

From this corner, a point established by person(s) unknown bears N. 49° 43' 45" W., 6.53 ft. dist., monumented with an iron pipe, 1 in. diam., firmly set, projecting 13 ins. above ground, and was not utilized in the course of this survey.

(E) The center 1/4 sec. cor. of sec. 31, established by Rogers in 1980, monumented with an iron post, 2 1/2 ins. diam., firmly set, projecting 6 ins. above ground, with brass cap mkd.

C
1/4 S 31
C
1980

from which the remaining bearing tree mkd. by Rogers

A fir, 14 ins. diam., bears S. 30 1/4° E., 23.4 ft. dist., with a healed blaze.

and a new accessory

A rebar, 30 ins. long, 5/8 in. diam., driven 28 ins. in the ground for a reference monument, bears N. 40° 11' 46" E., 15.06 ft. dist. with an alum. cap mkd. RM C1/4 S31 15.1 FT TO COR and an arrow pointing to the corner.

From this corner, a point established by person(s) unknown bears S. 21° 47' 16" W., 2.98 ft. dist., monumented with an iron pipe, 1 in. diam., firmly set, projecting 12 ins. above ground, and was not utilized in the course of this survey.

(F) The center W 1/16 sec. cor. of sec. 31, established by Rogers in 1980, monumented with an iron post, 2 1/2 ins. diam., firmly set, projecting 4 ins. above ground, with brass cap mkd.

W 1/16
C S 31
1980

from which bearing trees mkd. by Rogers

A fir, 17 ins. diam., bears S. 18 3/4° E., 21.8 ft. dist., with a healed blaze.

A cedar, 14 ins. diam., bears N. 17° W., 29.4 ft. dist., with a healed blaze.

FILED

Date: 5/17/2011 By: JC
This survey consists of:
Map: T29S R6W 2011
Narrative: VOL 56
Corner Rpt: PGS 22275-76

DOUGLAS COUNTY SURVEYOR

UNITED STATES DEPARTMENT OF THE INTERIOR BUREAU OF LAND MANAGEMENT

Portland, Oregon

The retracement represented by this plat, having been correctly executed in accordance with the requirements of law and the regulations of this Bureau, is hereby accepted.

For the Director

John P. Rainworth, Acting

Chief Cadastral Surveyor of Oregon

March 2, 2011

Date