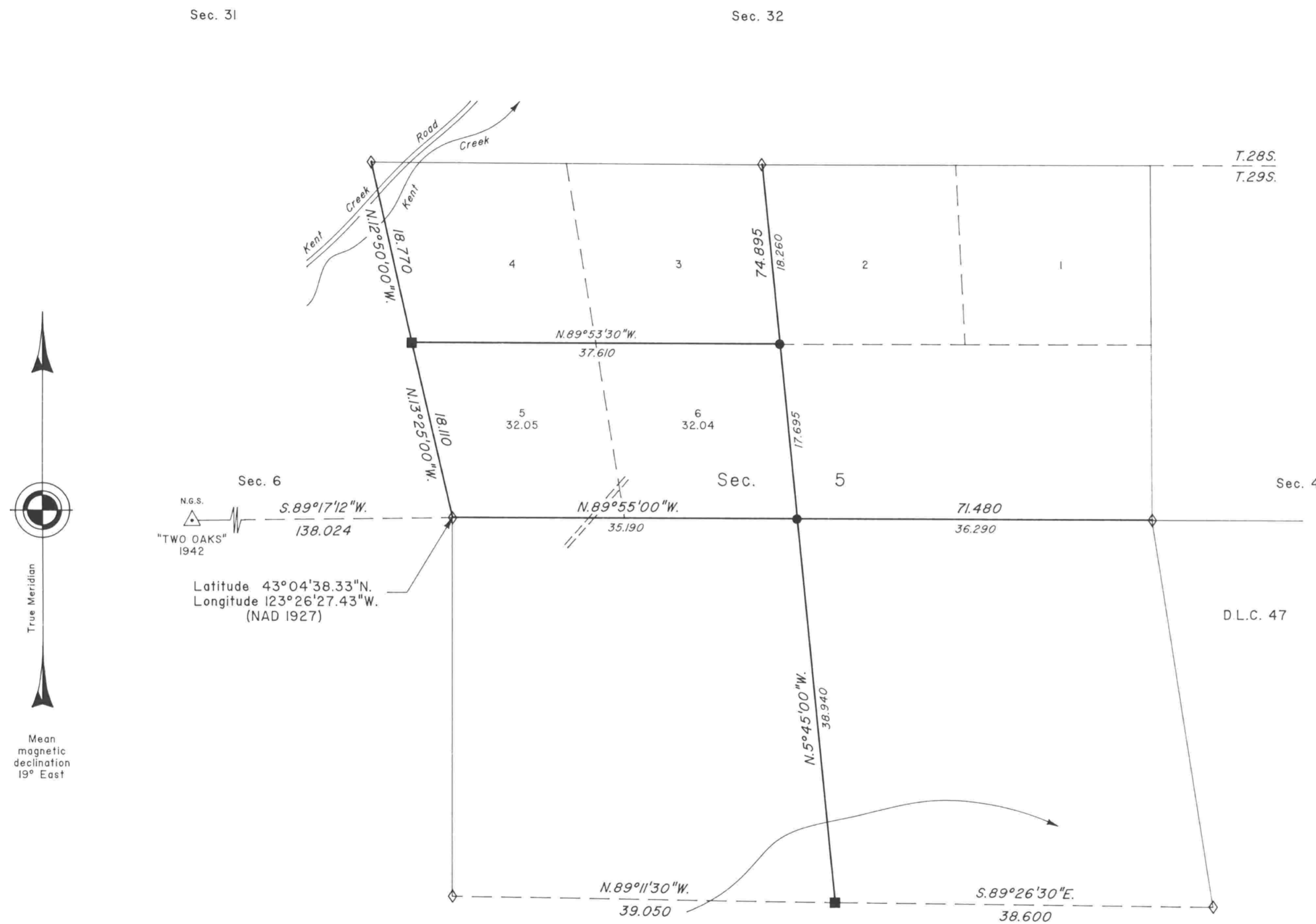


# TOWNSHIP 29 SOUTH, RANGE 6 WEST, OF THE WILLAMETTE MERIDIAN, OREGON

## DEPENDENT RESURVEY AND SUBDIVISION OF SECTION 5



A history of surveys is contained in the field notes.

This plat represents a dependent resurvey of a portion of the subdivisional lines, T. 29 S., R. 6 W., Willamette Meridian, Oregon, designed to restore the corners in their true original locations according to the best available evidence, and the subdivision of section 5.

Except as shown hereon, the lottings and areas are as shown on the plat approved March 9, 1855.

The survey was executed by Dale T. Bedell, Cadastral Surveyor, beginning July 25, 1994, and completed October 27, 1994, pursuant to Special Instructions dated March 24, 1994, under Group Number 1714, Oregon.

Timber in this area consists of fir, cedar, hemlock, pine, yew, alder, cherry, maple, oak, madrone, will, ash and chinquapin.

The tie to the geodetic control station is reported as mean bearing and sea level distance.

UNITED STATES DEPARTMENT OF THE INTERIOR  
BUREAU OF LAND MANAGEMENT

Portland, Oregon January 17, 1997

This plat is strictly conformable to the approved field notes, and the survey, having been correctly executed in accordance with the requirements of law and the regulations of this Bureau, is hereby accepted.

For the Director

*Wayne M. Gardner*  
Chief Cadastral Surveyor of Oregon