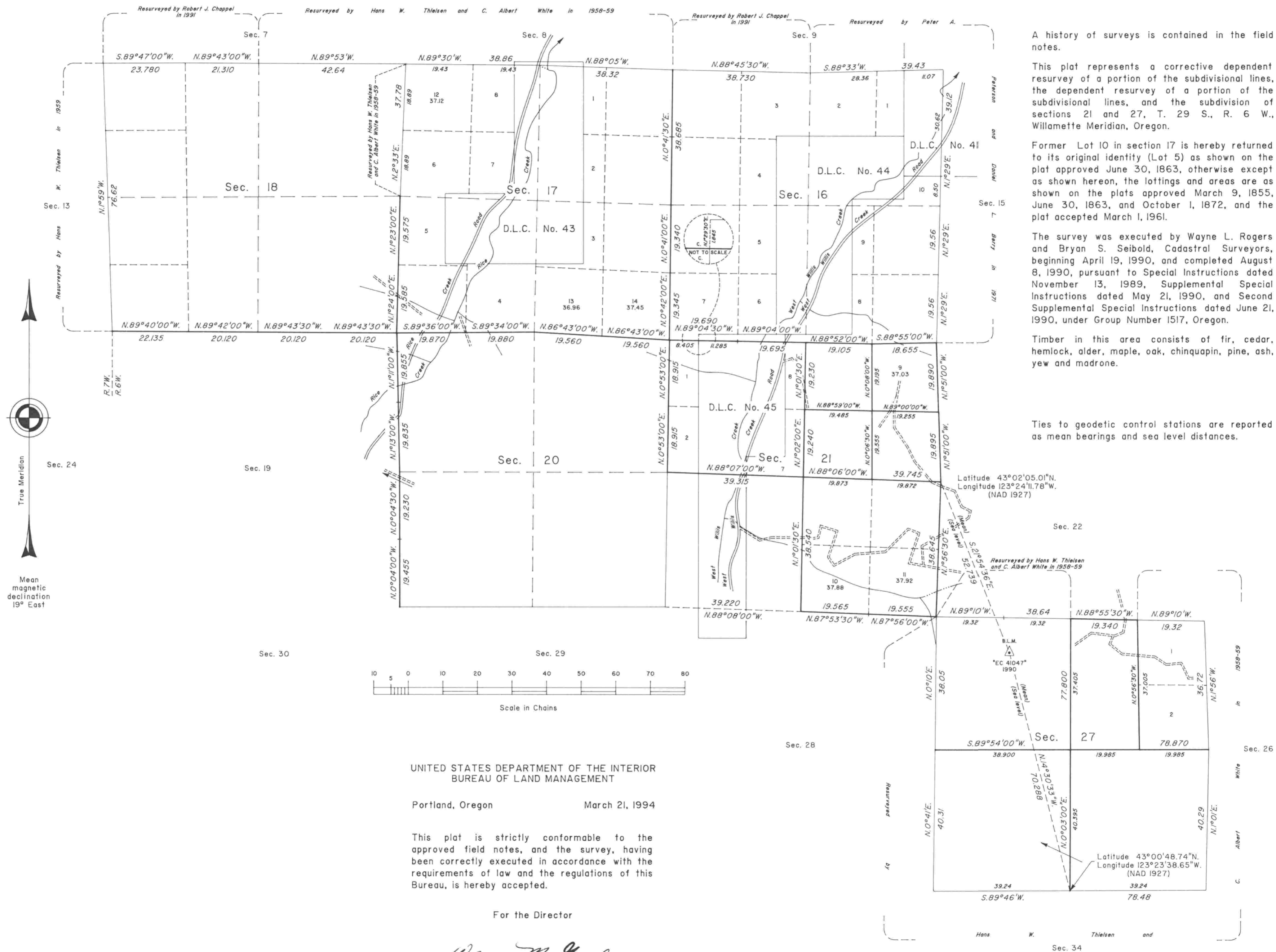


TOWNSHIP 29 SOUTH, RANGE 6 WEST, OF THE WILLAMETTE MERIDIAN, OREGON

CORRECTIVE DEPENDENT RESURVEY, DEPENDENT RESURVEY AND SUBDIVISION OF SECTIONS 21 AND 27



A history of surveys is contained in the field notes.

This plat represents a corrective dependent resurvey of a portion of the subdivisional lines, the dependent resurvey of a portion of the subdivisional lines, and the subdivision of sections 21 and 27, T. 29 S., R. 6 W., Willamette Meridian, Oregon.

Former Lot 10 in section 17 is hereby returned to its original identity (Lot 5) as shown on the plat approved June 30, 1863, otherwise except as shown hereon, the lottings and areas are as shown on the plats approved March 9, 1855, June 30, 1863, and October 1, 1872, and the plat accepted March 1, 1961.

The survey was executed by Wayne L. Rogers and Bryan S. Seibold, Cadastral Surveyors, beginning April 19, 1990, and completed August 8, 1990, pursuant to Special Instructions dated November 13, 1989, Supplemental Special Instructions dated May 21, 1990, and Second Supplemental Special Instructions dated June 21, 1990, under Group Number 1517, Oregon.

Timber in this area consists of fir, cedar, hemlock, alder, maple, oak, chinquapin, pine, ash, yew and madrone.

Ties to geodetic control stations are reported as mean bearings and sea level distances.

UNITED STATES DEPARTMENT OF THE INTERIOR
BUREAU OF LAND MANAGEMENT

Portland, Oregon March 21, 1994

This plat is strictly conformable to the approved field notes, and the survey, having been correctly executed in accordance with the requirements of law and the regulations of this Bureau, is hereby accepted.

For the Director

Wayne M. Gardner

Chief Cadastral Surveyor of Oregon

R.F.B.