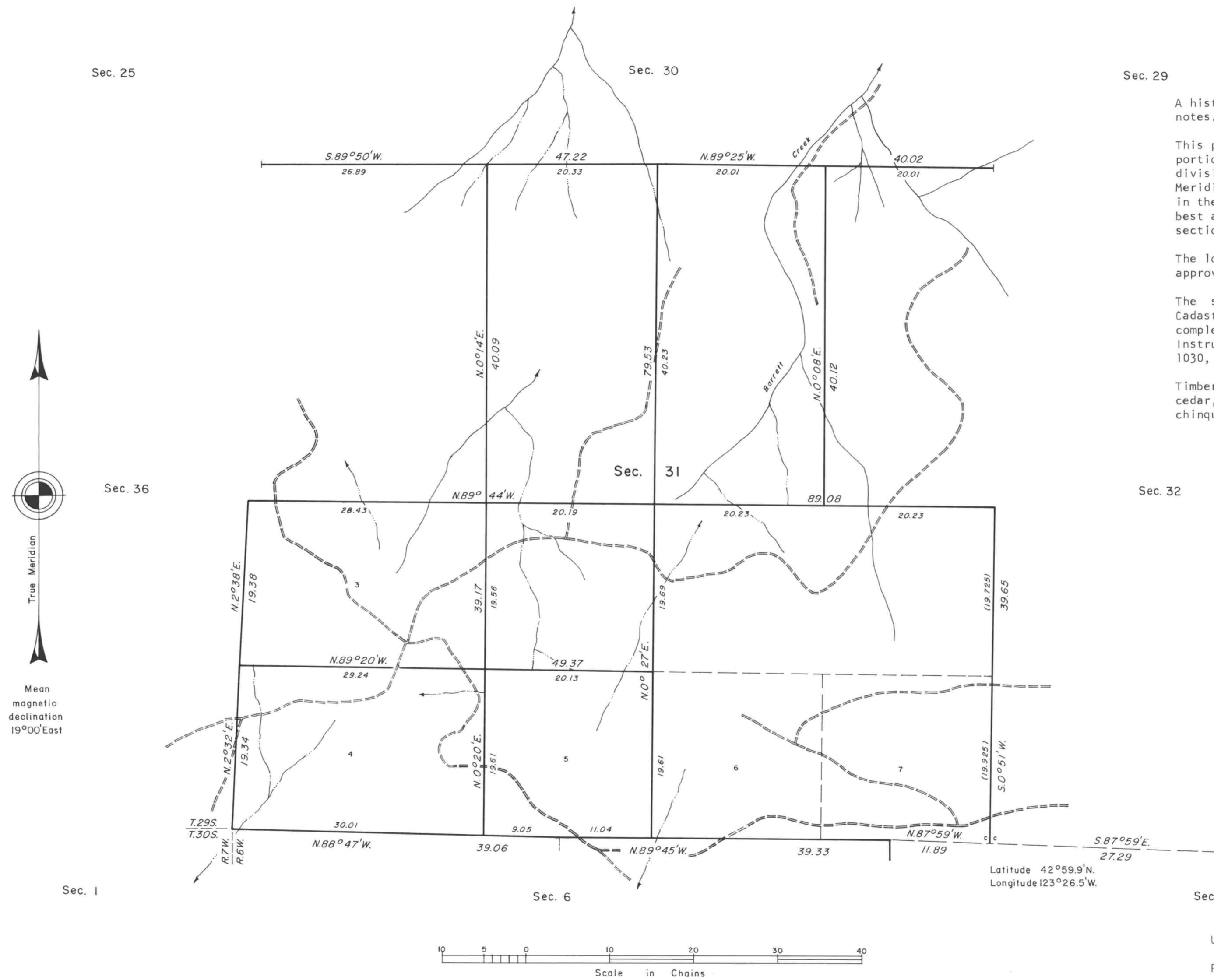


# TOWNSHIP 29 SOUTH, RANGE 6 WEST, OF THE WILLAMETTE MERIDIAN, OREGON.

## DEPENDENT RESURVEY AND SUBDIVISION OF SECTION 31



Sec. 29

A history of surveys is contained in the field notes.

This plat represents a dependent resurvey of a portion of the south and west boundaries and subdivisional lines, T. 29 S., R. 6 W., Willamette Meridian, Oregon, designed to restore the corners in their true original locations according to the best available evidence, and the subdivision of section 31.

The lottings and areas are as shown on the plat approved June 29, 1906.

The survey was executed by Wayne L. Rogers, Cadastral Surveyor, beginning August 11, 1980, and completed September 30, 1980, pursuant to Special Instructions dated August 4, 1980, for Group No. 1030, Oregon.

Timber in this area consists of fir, hemlock, cedar, pine, oak, maple, madrone, oak, alder, and chinquapin.

Sec. 32

Sec. 5

UNITED STATES DEPARTMENT OF THE INTERIOR  
BUREAU OF LAND MANAGEMENT  
Portland, Oregon May 11, 1984

This plat is strictly conformable to the approved field notes, and the survey, having been correctly executed in accordance with the requirements of law and the regulations of this Bureau, is hereby accepted.

For the Director

*William W. Glenn*  
Chief Cadastral Surveyor of Oregon