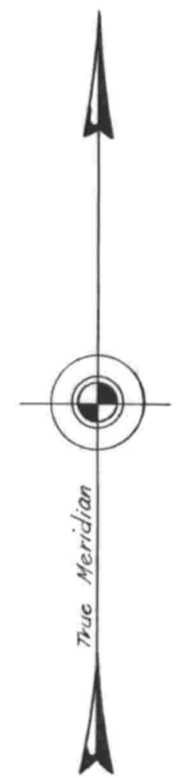


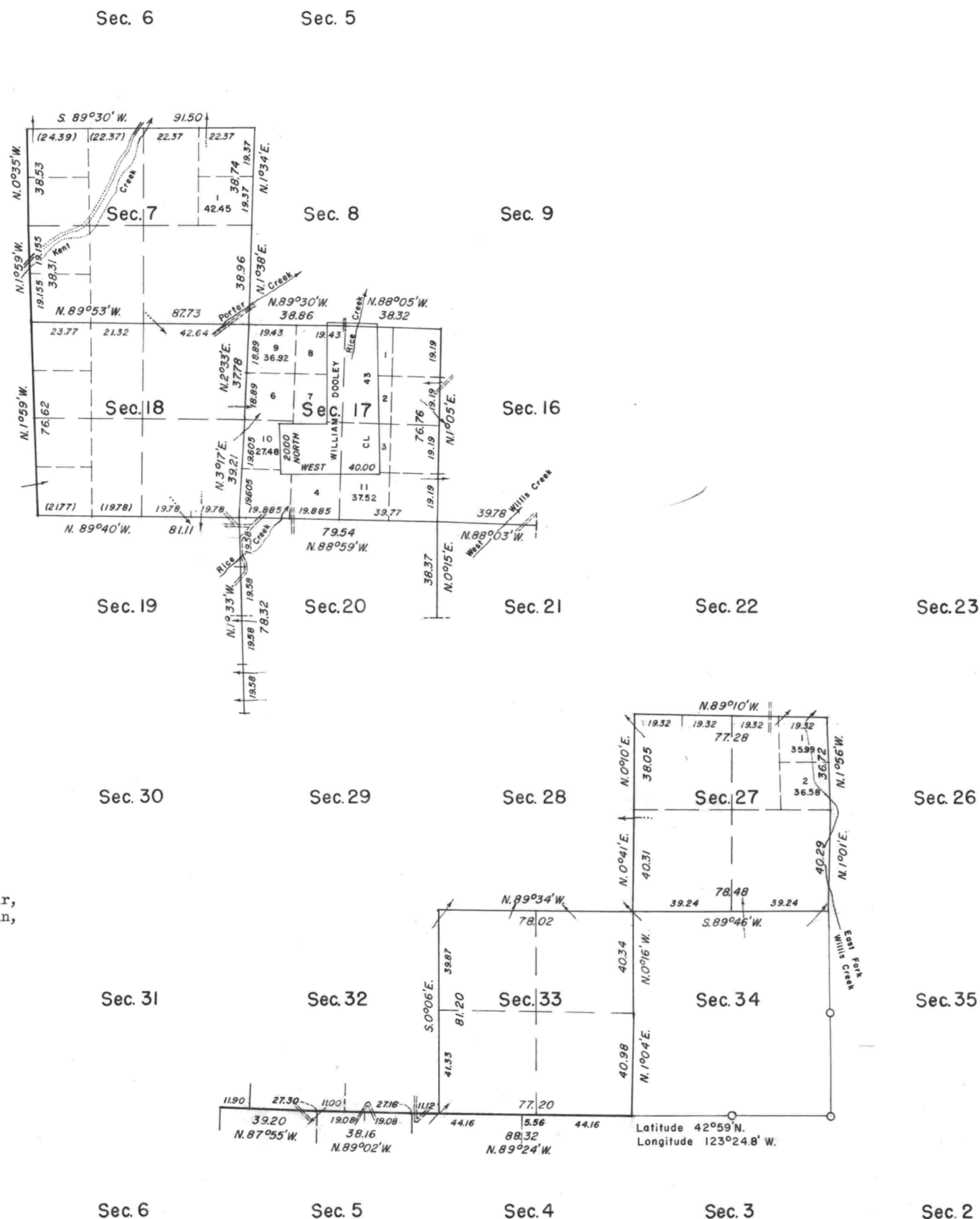
# TOWNSHIP 29 SOUTH, RANGE 6 WEST, OF THE WILLAMETTE MERIDIAN, OREGON

DEPENDENT RESURVEY



Mean magnetic declination  
19°45' East

Timber in this area consists of fir, pine, cedar, oak, madrona, maple, chinquapin, hemlock, yew, cottonwood and alder.



This plat represents a retracement and re-establishment of portions of the south boundary and subdivisional lines and remonumentation of corners as indicated, designed to restore the corners in their true original location according to the best available evidence; and, excepting as new or modified vacant subdivisions are shown hereon, the lottings and areas are as shown on the plats approved March 9, 1855, June 30, 1863 and June 29, 1906.

The north boundary surveyed by Robert Elder and H. S. Gile in 1853.

The south, east and west boundaries and a portion of the subdivisional lines surveyed by Nathaniel Ford in 1855.

In 1872 William H. Byars completed sections 27 and 34 and resurveyed a portion of the lines of sections 26 and 35.

Section 28 was completed by H. G. Hurlburt in 1878.

In 1904 Fred Mensch retraced portions of the south boundary, west boundary and subdivisional lines and completed the subdivision of the township.

The west boundary of section 31 retraced by Roy T. Campbell in 1910.

A portion of the west boundary resurveyed by Hans W. Thielsen in 1957 and 1959.

Dependent resurvey of portions of the south boundary and subdivisional lines and remonumentation of certain corners, T. 29 S., R. 6 W., Will. Mer., Oregon, executed by Hans W. Thielsen, and C. Albert White, July 23, 1958 to August 5, 1959, under Special Instructions dated June 20, 1957 and May 3, 1957, which provide for the surveys included under Groups Nos. 348 and 350, Oregon.

UNITED STATES DEPARTMENT OF THE INTERIOR  
BUREAU OF LAND MANAGEMENT  
Washington, D.C. March 1, 1961

This plat is strictly conformable to the approved field notes, and the survey, having been correctly executed in accordance with the requirements of law and the regulations of this Bureau, is hereby accepted.

For the Director

Cadastral Engineering Staff Officer



Area resurveyed - 3,067.51 Acres

"SUSPENDED, August 14, 1980, FILE 9622.1 (D-401)"  
Suspension Lifted, August 23, 1982, File 9622.1 (OR942)  
"Suspended November 8, 1989. See File 9631 (OR942)"

o Corners remonumented in 1958, under Group No. 350