

TOWNSHIP 29 SOUTH, RANGE 5 WEST, OF THE WILLAMETTE MERIDIAN, OREGON

DEPENDENT RESURVEY AND SUBDIVISION OF SECTION 35

FILED
 Date: 8/29/2018 By: JC
 This survey consists of:
 Map: T29-5W 2018-1
 Narrative: VOL. 59 PAGE
 Corner Rpt: 23564-23578

DOUGLAS COUNTY
 SURVEYOR

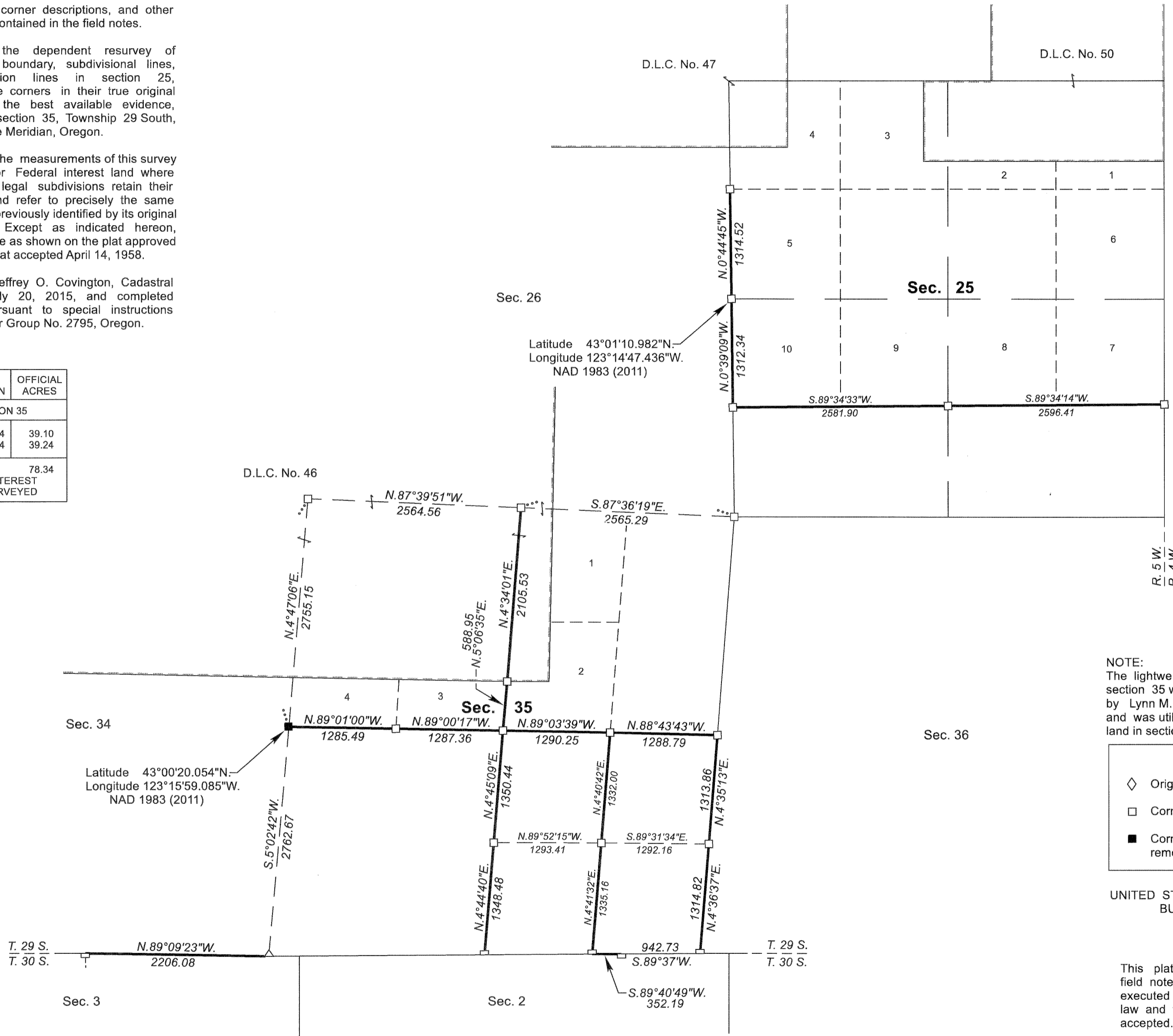
A history of surveys, corner descriptions, and other relevant information are contained in the field notes.

This plat represents the dependent resurvey of portions of the south boundary, subdivisional lines, and subdivision-of-section lines in section 25, designed to restore the corners in their true original locations according to the best available evidence, and the subdivision of section 35, Township 29 South, Range 5 West, Willamette Meridian, Oregon.

Official areas based on the measurements of this survey have been returned for Federal interest land where indicated. Aliquot part legal subdivisions retain their aliquot characteristics and refer to precisely the same land as that which was previously identified by its original survey or description. Except as indicated hereon, the lottings and areas are as shown on the plat approved March 9, 1855, and the plat accepted April 14, 1958.

Survey executed by Jeffrey O. Covington, Cadastral Surveyor, beginning July 20, 2015, and completed August 27, 2015, pursuant to special instructions approved July 1, 2015, for Group No. 2795, Oregon.

LEGAL SUBDIVISION	OFFICIAL ACRES
SECTION 35	
NE 1/4 SE 1/4	39.10
SE 1/4 SE 1/4	39.24
TOTAL AREA	78.34
FEDERAL INTEREST LAND RESURVEYED	



NOTE:
 The lightweight exterior line on the south boundary of section 35 with bearing and distance shown was surveyed by Lynn M. Roseberry and James E. Jelley in 1967-69, and was utilized to calculate the areas of Federal interest land in section 35.

LEGEND	
◇	Original corner previously remonumented
□	Corner previously established or reestablished
■	Corner previously established or reestablished; remonumented this survey

UNITED STATES DEPARTMENT OF THE INTERIOR
 BUREAU OF LAND MANAGEMENT

Portland, Oregon

This plat is strictly conformable to the approved field notes, and the survey, having been correctly executed in accordance with the requirements of law and the regulations of this Bureau, is hereby accepted.

For the Director
Mary J. M. Hartzel
 Chief Cadastral Surveyor of Oregon

April 23, 2018

Date

