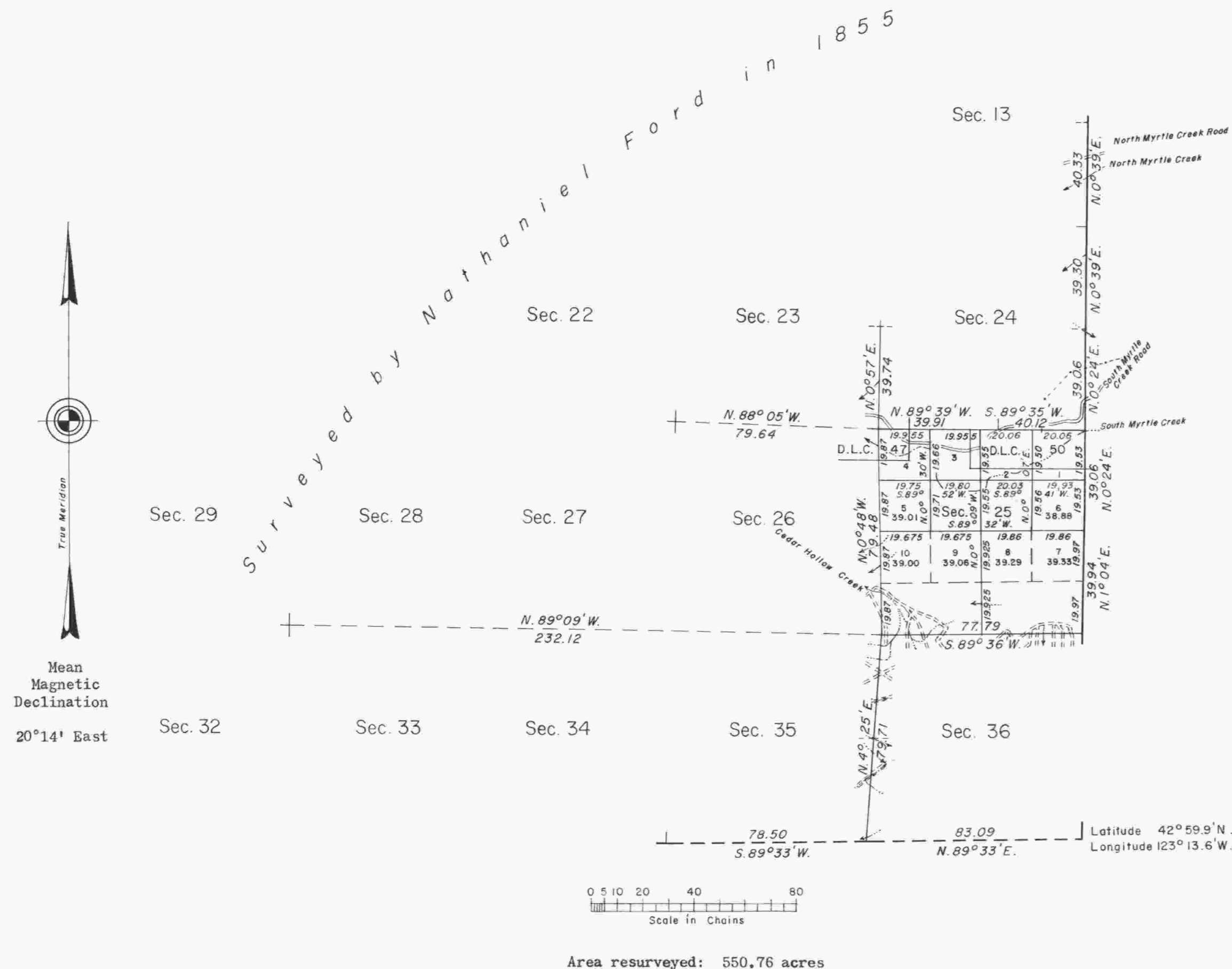


# TOWNSHIP 29 SOUTH, RANGE 5 WEST, OF THE WILLAMETTE MERIDIAN, OREGON.

DEPENDENT RESURVEY AND PARTIAL SUBDIVISION



True Meridian

Mean Magnetic Declination  
20°14' East

Surveyed by Nathaniel Ford in 1855

This plat represents a retracement and reestablishment of a portion of the East boundary and a portion of the subdivisional lines designed to restore the corners in their true original location according to the best available evidence. For lottings and areas not shown hereon, reference will be made to plats approved March 9, 1855 and June 25, 1862.

The East boundary surveyed by Charles E. Freeman in 1851.

The subdivisional lines surveyed by Nathaniel Ford in 1855.

The South boundary retraced by Oscar F. Thiel in 1896.

The East boundary of sec. 13 retraced by W. F. Briggs in 1899.

DLC No. 47 surveyed by Bowman and Barnett in 1856. DLC No. 50 surveyed by Jossiah A. Burnett in 1860.

Dependent resurvey of a portion of the East boundary and a portion of the subdivisional lines and partial subdivision of section 25, T. 29 S., R. 5 W., Willamette Meridian, Oregon, executed by Irving Zirpel, Jr., July 30 to September 13, 1957, under Special Instructions dated June 11, 1957, which provide for the surveys included under Group No. 355, Oregon.

Timber in this area consists of fir, incense cedar, pine, maple, oak, madrona, and dogwood.

UNITED STATES DEPARTMENT OF THE INTERIOR  
BUREAU OF LAND MANAGEMENT  
Washington, D. C. April 14, 1958

This plat is strictly conformable to the approved field notes, and the survey, having been correctly executed in accordance with the requirements of law and the regulations of this Bureau, is hereby accepted.

For the Director  
*Carl G. Harrington*  
Cadastral Engineering Staff Officer