

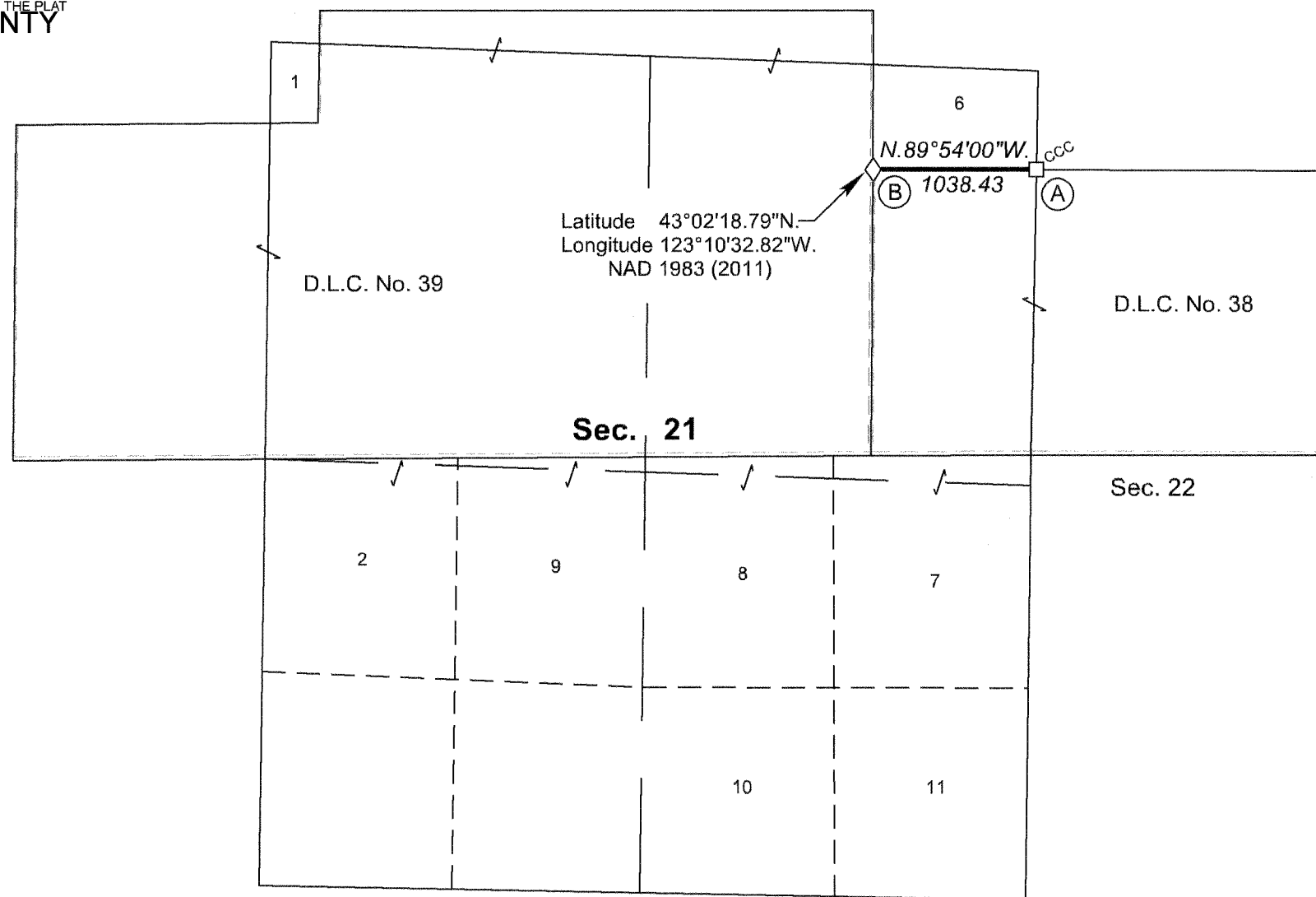
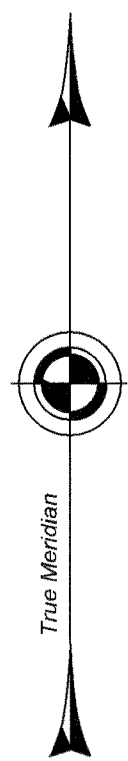
FILED

Date: 8/21/2017 By: JC
This survey consists of:
Map: PLAT: T29-3 2017-1
Narrative: VOL. 58 PAGES
Corner Rpt: 23426

TOWNSHIP 29 SOUTH, RANGE 4 WEST, OF THE WILLAMETTE MERIDIAN, OREGON

DEPENDENT RESURVEY

DOUGLAS COUNTY SURVEYOR



The history of official surveys pertaining to this survey is as follows:

In 1855, Nathaniel Ford, U.S. Deputy Surveyor, surveyed a portion of the subdivisional lines, as shown on the official plat of survey approved March 9, 1855.

In 1857, Dennis Hathorn, U.S. Deputy Surveyor, surveyed Donation Land Claim Nos. 38 and 39, as shown on the official plat of survey approved June 30, 1863.

In 1967-77, Lynn M. Roseberry and James E. Jelley, Cadastral Surveyors, resurveyed a portion of the east boundary, a portion of the subdivisional lines, and a portion of the claim lines, and subdivided sections 9, 21, and 24, as shown on the official plat of survey accepted October 11, 1978.

The following local surveys filed in the Douglas County Surveyors Office are referred to in the subsequent corner descriptions and are referenced by surveyor's last name, official title or Professional Engineer (PE), and year.

Date	Name and Registration Number	File Number
1932	Ben B. Irving, Douglas County Surveyor	CS 37/62
1956	Hohn H. Markham, Jr., PE No. 2880	CS 42/188

This plat constitutes the entire record of the dependent resurvey of a portion of the north boundary of Donation Land Claim No. 38 in section 21, Township 29 South, Range 4 West, Willamette Meridian, Oregon, designed to restore the corners in their true original locations according to the best available evidence.

The directions of the lines are based on the true meridian as determined by Global Positioning Systems (GPS) techniques and carried forward by sustained angulation using conventional survey techniques. All measurements along the lines were derived through the use of GPS and conventional survey techniques. Measured distances and directions have been adjusted by computer software that incorporates a least squares adjustment routine. The adjusted mean bearings and mean horizontal ground elevation distances are reported to the nearest second and 0.01 foot.

The lottings and areas are as shown on the plat approved June 30, 1863 and the plat accepted October 11, 1978.

Preliminary to the resurvey, the lines of the official original surveys and resurveys were retraced and a search was made for all corners, lines, other calls of record, and where available, collateral evidence of local surveys and corners. Identified corners were perpetuated in their original positions. The retracement data was thoroughly verified and only the true line field data are given hereon.

Each new bearing tree has a 2 1/2 inch x 1/4 inch magnetic nail (Mag Nail) driven at the base on right side center, unless otherwise noted in the corner description. Only those lines bounding Federal interest land were blazed.

The geographic position shown hereon was determined by a tie from a temporary GPS control point utilizing dual frequency, carrier phase GPS receivers, and processed using the National Geodetic Survey's Online Positioning User Service (OPUS).

The survey was executed in accordance with the specifications set forth in the Manual of Surveying Instructions (2009), and the special instructions approved June 24, 2015, for Group No. 2794, Oregon, by Jeffrey O. Covington, Cadastral Surveyor, beginning June 30, 2015 and completed July 2, 2015. He was assisted by Robert NMI Durning, Marc A. Montpas, and Juston A. Dyer, Surveying Technicians.

(A) The crossing closing cor. of secs. 21 and 22, on the N. bdy. of Donation Land Claim No. 38, monumented with an iron post, 2 1/2 ins. diam., firmly set, projecting 3 ins. above ground, with brass cap mkd.

T 29 S	R 4 W
CCC	
S 21	S 22
C 38	
1969	

from which the remains of bearing trees mkd. by Roseberry and Jelley in 1967-77

A healed over, living, sawed fir stump, 22 ins. diam., bears N. 58 3/4° E., 40.3 ft. dist., with a healed blaze.

A fir, 26 ins. diam., bears N. 35 1/2° W., 42.8 ft. dist., with a healed blaze. (Record, 44.2 ft. dist.)

and a new bearing tree

A cedar, 5 ins. diam., bears N. 60° E., 38.6 ft. dist., mkd. X BT.

Corner is located 6 ft. S. of a barbed wire fence extending E. and W.

From the corner

W., 50 ft. dist., to a spur ridge, slopes N.

(B) The NW. cor. of Donation Land Claim No. 38, on the E. bdy. of Claim 39, monumented with an iron post, 2 1/2 ins. diam., firmly set, projecting 8 ins. above ground, with brass cap mkd.

T 29 S	R 4 W
S 22	
C 39	
C 38	
1969	

from which the remains of an original bearing tree

A root hole bears S. 60° E., 128.0 ft. dist., with fallen, decayed oak trunk, 20 ins. diam., lying alongside, with a healed blaze.

and remains of a bearing tree mkd. by Irving, Douglas County Surveyor, in 1932, reported by Roseberry and Jelley in 1967-77

An oak snag, 22 ins. diam., bears S. 62° E., 38.3 ft. dist., with a healed blaze.

and bearing trees mkd. by Markham, Jr., PE No. 2880, in 1956, reported by Roseberry and Jelley in 1967-77

A fir, 27 ins. diam., bears N. 20 3/4° E., 33.6 ft. dist., with a healed blaze. (Record, 35.0 ft. dist.)

An oak, 18 ins. diam., bears S. 36 1/2° W., 57.1 ft. dist., with a partially healed blaze.

The washed boulder, 4 x 10 ins., firmly set, projecting 4 ins. above ground, no marks, established by Irving and the iron rod, 3/4 in. diam., firmly set, projecting 8 ins. above ground, established by Markham are alongside the cor.

Corner is located under a barbed wire fence extending N. and S.

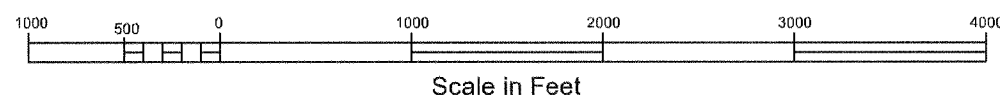
From the corner

E., 20 ft. dist., to a draw, drains S. 20° W.

I, Jeffrey O. Covington, Cadastral Surveyor, HEREBY CERTIFY upon honor, that in pursuance of special instructions bearing the approval date of the 24th day of June, 2015, and the assignment instructions bearing the date of the 24th day of June, 2015, I have dependently resurveyed a portion of the north boundary of Donation Land Claim Number 38, Township 29 South, Range 4 West, Willamette Meridian, Oregon, which is represented upon this plat as having been executed by me and under my direction; and that said survey has been made in strict conformity with said special instructions, the Manual of Surveying Instructions, and in the specific manner described on this plat.

Jeffrey O. Covington
Cadastral Surveyor

February 13, 2017
Date



LEGEND

- ◊ Original corner previously remonumented
- Corner previously established or reestablished

UNITED STATES DEPARTMENT OF THE INTERIOR
BUREAU OF LAND MANAGEMENT

Portland, Oregon

The survey represented by this plat, having been correctly executed in accordance with the requirements of law and the regulations of this Bureau, is hereby accepted.

For the Director
Mary J. M. Harts
Chief Cadastral Surveyor of Oregon

February 17, 2017
Date

OFFICIALLY FILED: 6/28/2017