

TOWNSHIP 29 SOUTH, RANGE 4 WEST, OF THE WILLAMETTE MERIDIAN, OREGON

DEPENDENT RESURVEY AND SUBDIVISION OF SECTION 15

FILED
 Date: 5/8/2015 By: JC
 This survey consists of:
 Map: 2015-1 T29-4W
 Narrative:
 Corner Rpt: VOL 58 PG 23208

**DOUGLAS COUNTY
 SURVEYOR**

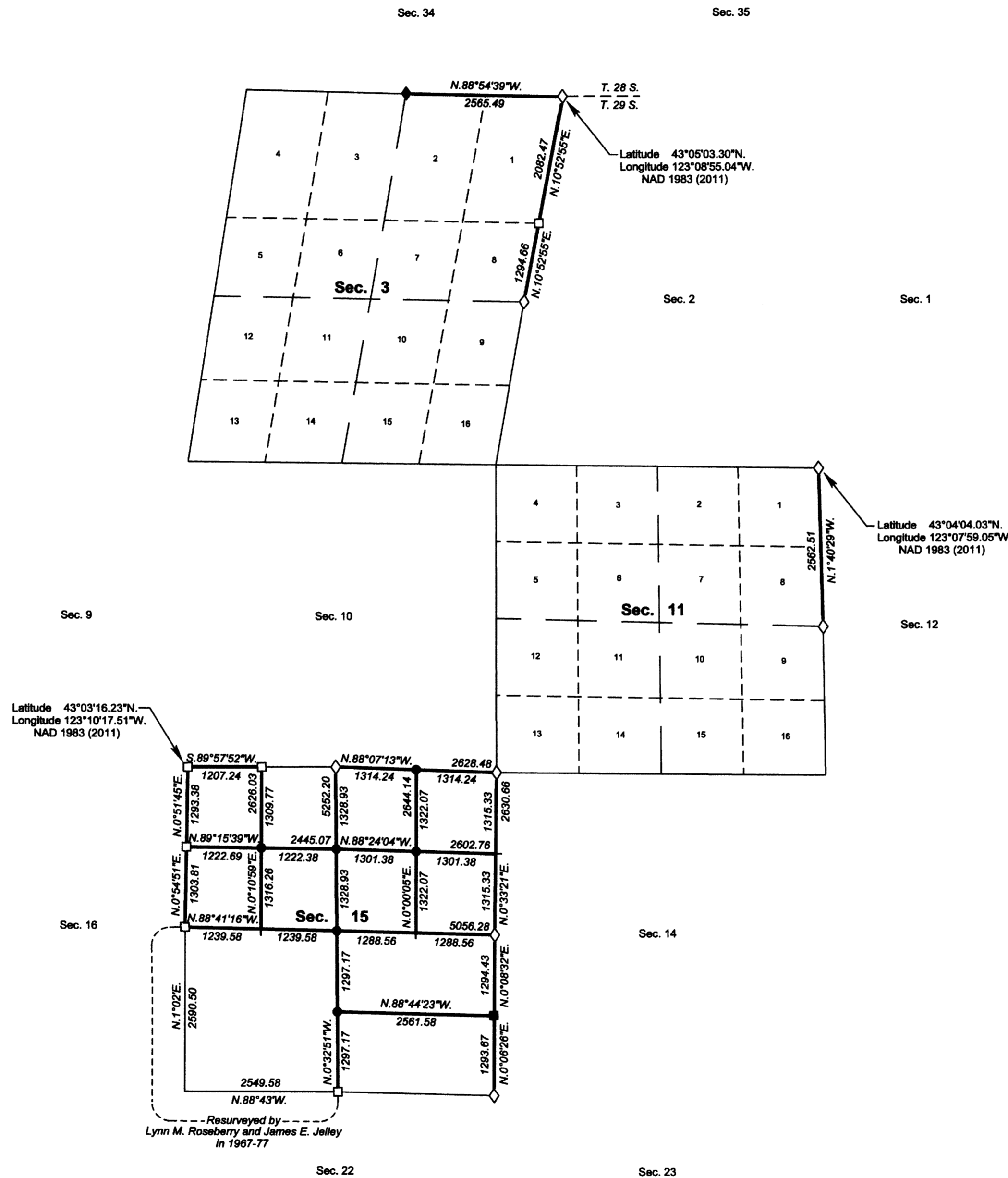
A history of surveys, corner descriptions, and other relevant information are contained in the field notes.

This plat represents the dependent resurvey of a portion of the north boundary and subdivisional lines, designed to restore the corners in their true original locations according to the best available evidence, and the subdivision of section 15, Township 29 South, Range 4 West, Willamette Meridian, Oregon.

Official areas based on the measurements of this survey have been returned for Federal interest land where indicated. Aliquot part legal subdivisions retain their aliquot characteristics and refer to precisely the same land as that which was previously identified by its original survey or description. Except as indicated hereon, the lottings and areas are as shown on the plats approved March 9, 1855, and August 11, 1881, and plat accepted March 5, 1997.

Survey executed by George M. Winter, Cadastral Surveyor, beginning May 12, 2014, and completed July 31, 2014, pursuant to special instructions approved April 24, 2014, for Group No. 2747, Oregon.

OFFICIALLY FILED: 4/20/2015



Latitude 43°03'16.23\"/>

Latitude 43°05'03.30\"/>

Latitude 43°04'04.03\"/>

LEGAL SUBDIVISION	OFFICIAL ACRES
SECTION 15	
NE1/4 NE1/4	39.58
SW1/4 NE1/4	39.39
SE1/4 NE1/4	39.19
NW1/4 NW1/4	36.30
SW1/4 NW1/4	37.02
SE1/4 NW1/4	37.37
NE1/4 SW1/4	37.15
NW1/4 SW1/4	37.15
SW1/4 SW1/4	37.69
SE1/4 SW1/4	37.68
NE1/4 SE1/4	38.18
NW1/4 SE1/4	38.22
TOTAL AREA	454.92
FEDERAL INTEREST LAND RESURVEYED IN SECTION 15	

Resurveyed by
 Lynn M. Roseberry and James E. Jelley
 in 1967-77

LEGEND

- ◊ Original corner previously remonumented
- ◆ Original corner remonumented this survey
- Corner previously established or reestablished
- Corner previously established or reestablished; remonumented this survey
- Corner established or reestablished this survey
- + Corner point calculated, no monument set

UNITED STATES DEPARTMENT OF THE INTERIOR
 BUREAU OF LAND MANAGEMENT

Portland, Oregon

This plat is strictly conformable to the approved field notes, and the survey, having been correctly executed in accordance with the requirements of law and the regulations of this Bureau, is hereby accepted.

For the Director
Mary J. M. Hart
 Chief Cadastral Surveyor of Oregon

February 25, 2015
 Date

