

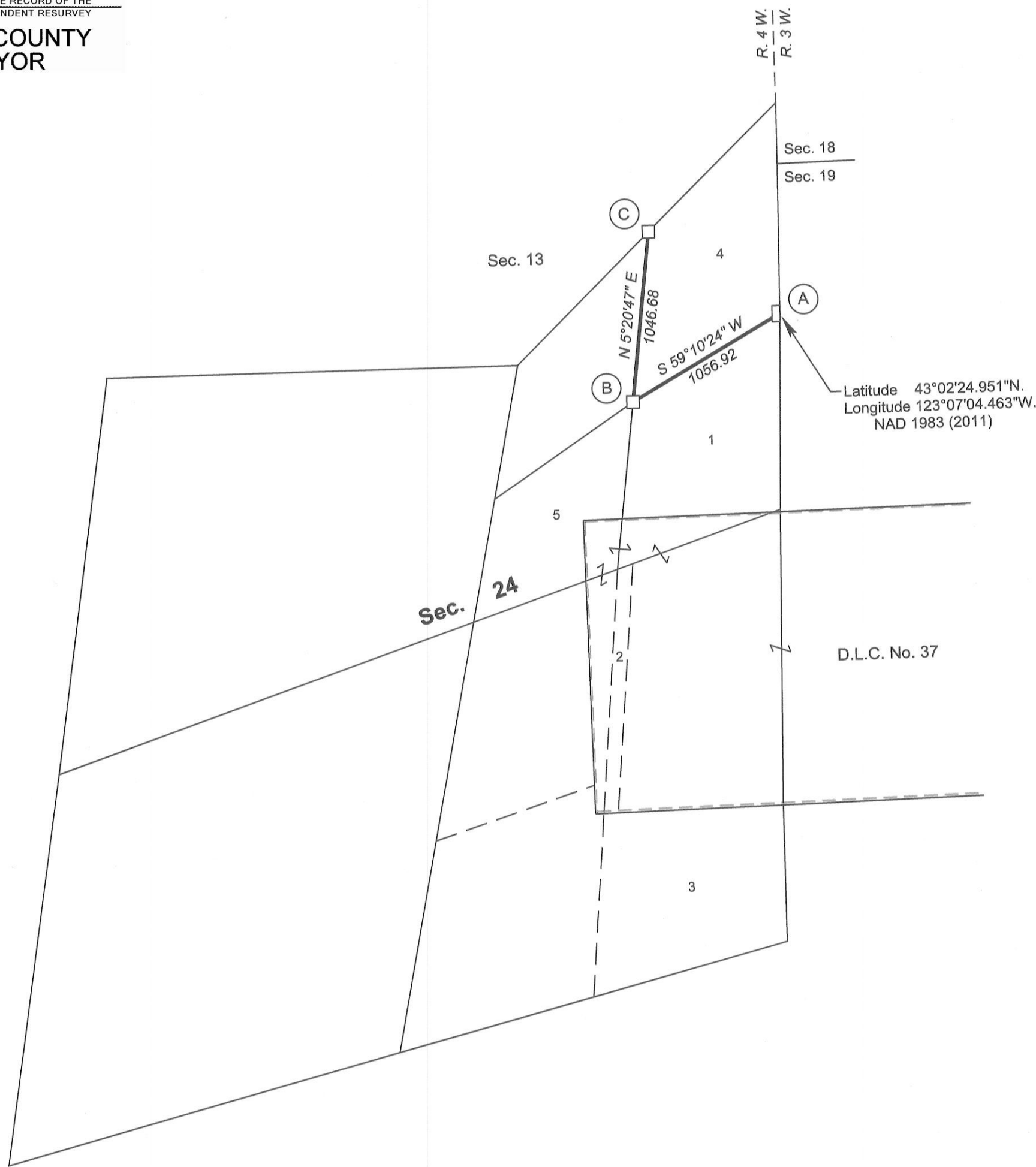
OFFICIALLY FILED: 6/25/2014

FILED

Date: 8/6/2014 By: JC
 This survey consists of:
 Map: T29-4W 2014-1
 Narrative: VOL. 58 PGS 2305
 Corner Rpt: THIS PLAT REPRESENTS THE ENTIRE RECORD OF THE DEPENDENT RESURVEY
 DOUGLAS COUNTY SURVEYOR

TOWNSHIP 29 SOUTH, RANGE 4 WEST, OF THE WILLAMETTE MERIDIAN, OREGON

RETRACEMENT



(A) The N 1/16 sec. cor. of sec. 24 only, on the E. bdy. of the Tp., monumented with an iron post, 2 1/2 ins. diam., firmly set, projecting 7 ins. above ground, with brass cap mkd.

N 1/16
S 24
1967

from which the remains of a bearing tree mkd. by Woodford, PE No. 622, in 1956

A sawed, decayed fir stump, 21 ins. diam., bears S. 1 1/2° E., 20.1 ft. dist., with a healed blaze.

and bearing trees mkd. by Roseberry and Jelley in 1967-77

A fir, 28 ins. diam., bears S. 52 1/2° W., 70.6 ft. dist., with a healed blaze.

A fir, 21 ins. diam., bears N. 75° W., 97.7 ft. dist., with a healed blaze.

Corner is located on a SE. slope, 25 ft. N. 87° E. of the corner of 4-strand barbed wire fences extending S. and SW.

Latitude 43°02'24.951"N.
Longitude 123°07'04.463"W.
NAD 1983 (2011)

(B) The NE 1/16 sec. cor. of sec. 24, monumented with an iron post, 2 1/2 ins. diam., firmly set, projecting 5 ins. above ground, with brass cap mkd.

NW 1/16 S24
1977

from which the bearing tree mkd. by Roseberry and Jelley in 1967-77

A fir, 21 ins. diam., bears N. 23 1/4° W., 30.7 ft. dist., with a healed blaze. (Record, N. 25 3/4° W.)

From this corner, a point established by Woodford, PE No. 622, in 1956, bears S. 84° 02' 58" W., 3.71 ft. dist., (Record, S. 82° 45' W., 3.3 ft. dist.), monumented with an iron pipe, 3/4 in. diam., firmly set, bent to the west, projecting 8 ins. above ground, with no cap, from which the remains of bearing trees mkd. by Woodford

A yew, 9 ins. diam., bears N. 60° E., 24.5 ft. dist., with a healed blaze. (Record, N. 48° E., 18.5 ft.)

A roothole bears N. 35° W., 7.6 ft. dist., lying downhill of which is a fallen, decayed yew snag, 10 ins. diam., with a hollowed blaze.

Corner is located on a SW. slope, 25 ft. E. of a creek, 2 ft. wide, course South.

(C) The E 1/16 sec. cor. of secs. 13 and 24, monumented with an iron post, 2 1/2 ins. diam., firmly set, projecting 4 ins. above ground, (alongside of which is an iron pipe, 2 1/2 ins. diam., firmly set, projecting 19 ins. above ground), with brass cap mkd.

S 13
E 1/16 S 24
1967

from which the remains of bearing trees mkd. by Woodford, PE No. 622, in 1956

A roothole bears N. 10 1/2° E., 8.6 ft. dist., alongside of which is an uprooted madrone stump, 21 ins. diam., with no marks visible and metal cap.

A decayed fir stump, size indeterminate, bears South, 7.3 ft. dist., with no marks visible.

and a bearing tree mkd. by Roseberry and Jelley in 1967-77

A yew, 11 ins. diam., bears S. 25° E., 18.5 ft. dist., with scribe marks E 1/16 S24 BT visible on a partially healed blaze.

and a new bearing tree

A fir, 6 ins. diam., bears N. 89 3/4° W., 12.9 ft. dist., mkd. E 1/16 S13 BT.

Corner is located on a SE. slope, 1 ft. N. 10° E. of the corner of 4-strand barbed wire fences extending S. and SW., and 53 ft. N. of a draw, drains S. 55° W.

This plat constitutes the entire record of the retracement of a portion of the subdivision-of-section lines of section 24, Township 29 South, Range 4 West, Willamette Meridian, Oregon.

The history of the official surveys pertaining to this retracement is as follows:

In 1967-77, Lynn M. Roseberry and James E. Jelley, Cadastral Surveyors, resurveyed a portion of the east boundary, subdivisional lines, and claim lines, and subdivided sections 9, 21, and 24 as shown on the official plat of survey accepted October 11, 1978.

The following survey, filed in the Douglas County Surveyor's Office, is referred to in subsequent corner descriptions and is referenced by surveyor's last name, Professional Engineer (PE) No., and year.

Date	Name and Registration Number	File Number
1956	Edwin S. Woodford, PE No. 622	C.S. 42/105

The directions of the lines are based on the true meridian as determined by Global Positioning System (GPS) techniques and carried forward by sustained angulation using conventional survey techniques. All measurements along the lines were derived through the use of GPS and conventional survey techniques. Measured distances and directions have been adjusted by computer software that incorporates a least squares adjustment routine. The adjusted mean bearings and mean horizontal ground elevation distances are reported to the nearest second and 0.01 foot.

The lottings and areas are as shown on the plat accepted October 11, 1978.

The lines of the official resurvey were retraced and a search was made for all corners, lines, other calls of record, and where available, collateral evidence of local surveys and corners. The retracement data were thoroughly verified and only the true line field data are given hereon.

The geographic position shown hereon was determined by direct occupation utilizing dual frequency, carrier phase GPS receivers, using for control National Spatial Reference System Continuously Operating Reference Station (CORS) "DODSON BUTTE CORS ARP", and National Cooperative CORS Network Station "ROSEBURG COOP CORS ARP".

The survey was executed in accordance with the specification set forth in the Manual of Surveying Instructions (2009), and the special instructions approved April 28, 2010, for Group No. 2500, Administrative File No. 1211, Oregon, by A. Bert Skeesick, Cadastral Surveyor, beginning September 24, 2013, and completed November 4, 2013. He was assisted by Robert NMI Durning and Marc A. Montpas, Surveying Technicians.

LEGEND

□ Corner previously established or reestablished

UNITED STATES DEPARTMENT OF THE INTERIOR
BUREAU OF LAND MANAGEMENT

Portland, Oregon

The survey represented by this plat, having been correctly executed in accordance with the requirements of law and the regulations of this Bureau, is hereby accepted.

For the Director

Mary J. M. Hartzel

Chief Cadastral Surveyor of Oregon

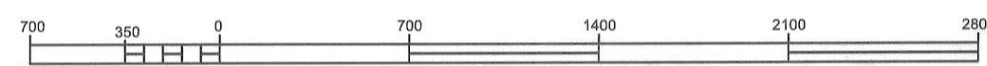
June 4, 2014

Date

I, A. Bert Skeesick, Cadastral Surveyor, HEREBY CERTIFY upon honor, that in pursuance of special instructions bearing the approval date of the 28th day of April, 2010, and the assignment instructions bearing the date of the 15th day of June, 2012, I have retraced a portion of the subdivision-of-section lines of section 24, Township 29 South, Range 4 West, Willamette Meridian, Oregon, which is represented upon this plat as having been executed by me and under my direction; and that said survey has been made in strict conformity with said special instructions, the Manual of Surveying Instructions, and in the specific manner described on this plat.

A. Bert Skeesick
Cadastral Surveyor

6/2/2014
Date



Scale in Feet