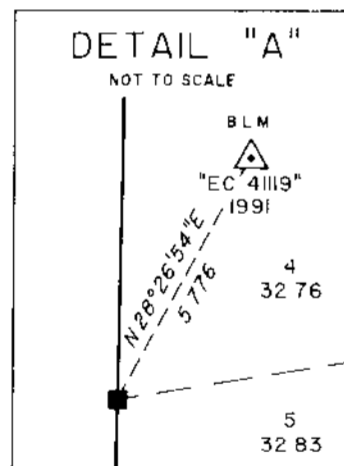
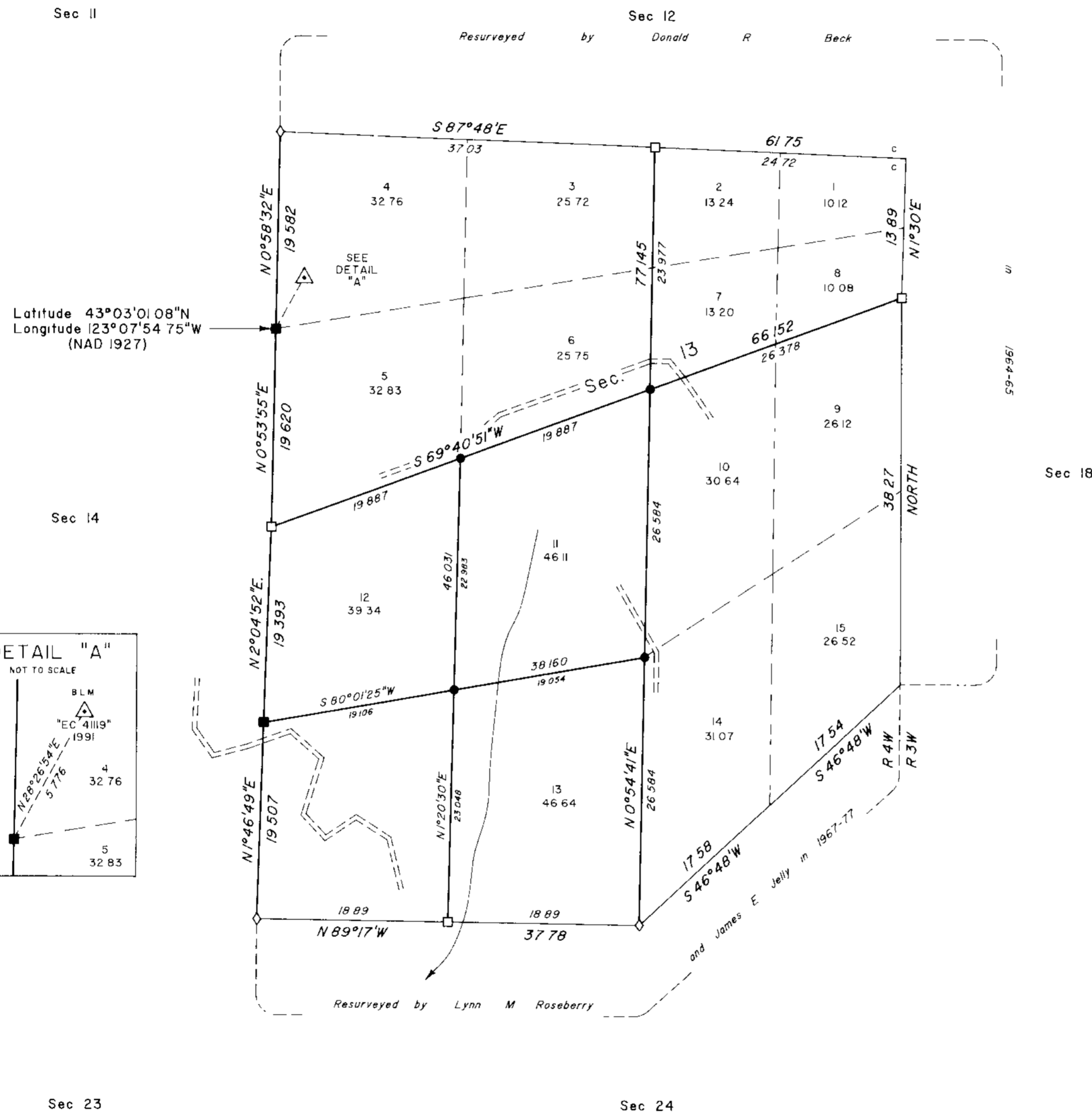


TOWNSHIP 29 SOUTH, RANGE 4 WEST, OF THE WILLAMETTE MERIDIAN, OREGON
 DEPENDENT RESURVEY AND SUBDIVISION OF SECTION 13

FILED
 Date: 2/9/1999 By: JP
 This survey consists of:
 Map:
 Narrative: Vol 52 Pgs
 Corner Pgt: 19939-19949
 DOUGLAS COUNTY
 SURVEYOR



A history of surveys is contained in the field notes

This plat represents a dependent resurvey of a portion of the subdivision lines, T 29 S, R 4 W, Willamette Meridian, Oregon, designed to restore the corners in their true original locations according to the best available evidence, and the subdivision of section 13

Measured distances and directions have been adjusted by Cadastral Measurement Management (CMM), a computer program that incorporates a least squares adjustment routine. The adjusted bearings and distances are reported to the nearest second and 0.001 chain

Except as shown hereon, the lottings and areas are as shown on the plat approved March 9, 1855

The survey was executed by Bryan S Seibold, Cadastral Surveyor, and Robert H Browning, Surveying Technician, beginning August 28, 1995, and completed September 27, 1995, pursuant to Special Instructions dated June 27, 1995, under Group Number 1775, Oregon

Timber in this area consists of fir, cedar, yew, pine, hemlock

The tie to the geodetic control station is reported as mean bearing and sea level distance

LEGEND	
◊	Original corner previously remonumented
□	Corner previously established or reestablished
■	Corner previously established or reestablished remonumented this survey
●	Corner established or reestablished this survey

UNITED STATES DEPARTMENT OF THE INTERIOR
 BUREAU OF LAND MANAGEMENT

Portland, Oregon September 23, 1998

This plat is strictly conformable to the approved field notes, and the survey, having been correctly executed in accordance with the requirements of law and the regulations of this Bureau, is hereby accepted

For the Director

Wayne R. Hansen

Chief Cadastral Surveyor of Oregon