

TOWNSHIP 29 SOUTH, RANGE 4 WEST, OF THE WILLAMETTE MERIDIAN, OREGON

DEPENDENT RESURVEY AND SUBDIVISION OF SECTIONS

FILED

Date: 2-23-98 By: JP

This survey consists of:

Map: _____

Narrative: _____

Corner Rpt: _____

**DOUGLAS COUNTY
SURVEYOR**

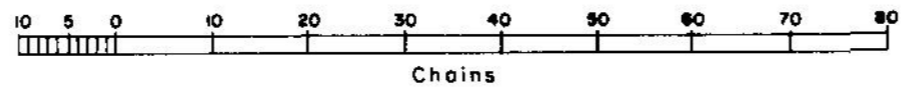
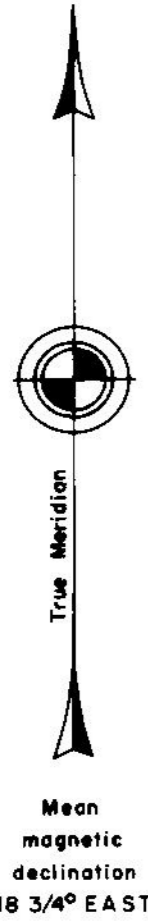
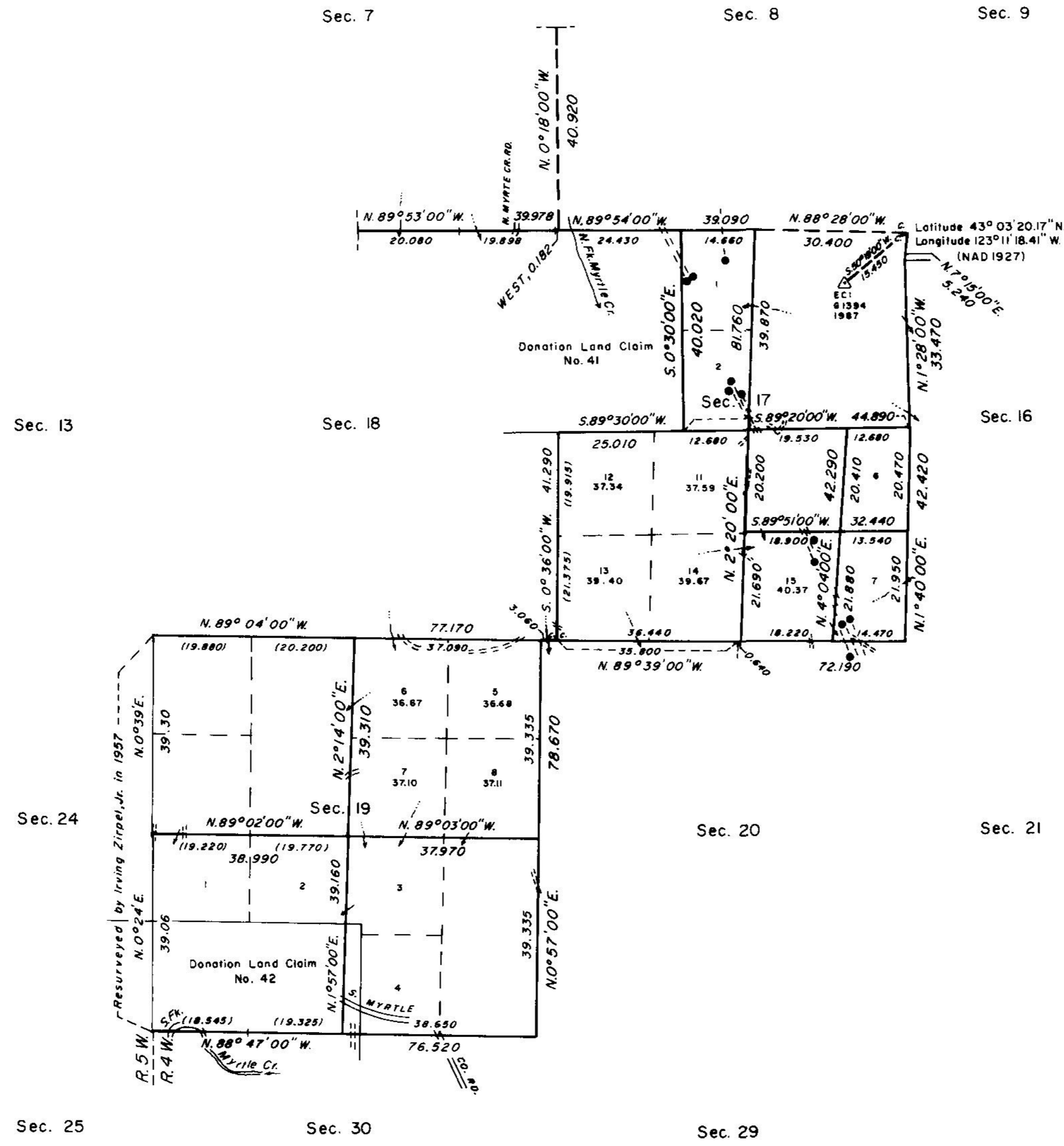
A history of surveys is contained in the field notes.

This plat represents a dependent resurvey of a portion of the subdivisional lines and boundaries of Donation Land Claim No. 41, T. 29 S., R. 4 W., Willamette Meridian, Oregon, designed to restore the corners in their true original locations according to the best available evidence, and the subdivision of sections 17 and 19.

Except as shown hereon, the lottings and areas are as shown on the plats approved March 9, 1855, February 20, 1858, June 30, 1863 and October 28, 1899.

The survey was executed by Boyd W. Peterson, Cadastral Surveyor, beginning August 25, 1987, and completed January 4, 1988, pursuant to Special Instructions dated July 23, 1987, and Supplemental Special Instructions dated August 25, 1987, under Group Number 1394, Oregon.

Timber in this area consists of fir, hemlock, cedar, oak, madrone, maple, pine and chinquapin.



UNITED STATES DEPARTMENT OF THE INTERIOR
BUREAU OF LAND MANAGEMENT

Portland, Oregon April 20, 1990

This plat is strictly conformable to the approved field notes, and the survey, having been correctly executed in accordance with the requirements of law and the regulations of this Bureau, is hereby accepted.

For the Director

Wayne M. Gardner
Chief Cadastral Surveyor of Oregon

*Suspension Lifted, July 14, 1997, File 9632 (OR957).
Refer to plat accepted March 5, 1997.

*Suspended March 6, 1992, see File 9632 (OR942)