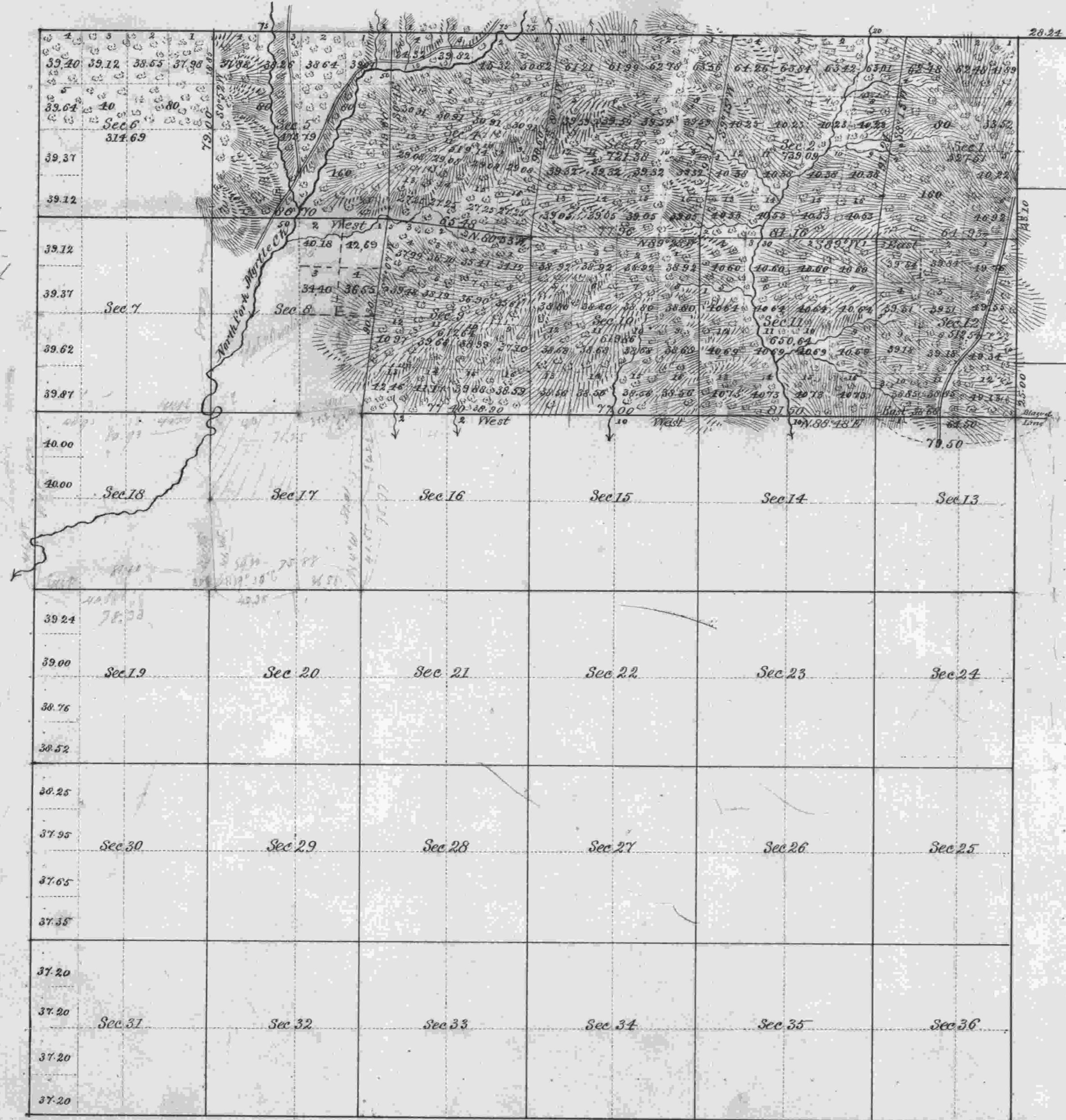


Township No. 29 South Range No. 4 West Willamette Meridian, Oregon.

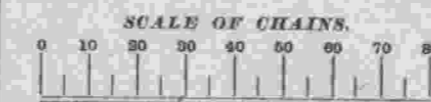
552

See 020 letter of Feb 25-1887, authorizing protraction of 118th Sec 8-



| Surveys Designated. | By Whom Surveyed. | Date of Contract. | Amount of Surveys. | | | When Surveyed. | Magnetic Declination. |
|-----------------------------|--------------------------|-------------------|--------------------|---------|--------------------|----------------|-----------------------|
| | | | Miles. | Chains. | Links. | | |
| Township Lines S.W. & E. by | Nathaniel Ford | May 30 1854 | | | | | |
| do do N by | W th H. Byers | July 22 1881 | | | April 7 to 12 1881 | | |
| Subdivisions | do do do | do do do | 17 | 73 | 54 | 13° E | |
| Intersections | do do do | do do do | | 18 | 10 | | |

Total number of Acres, 5697.28



The above Map of the Subdivisional lines of Township No. 29 South Range No. 4 West Willamette Meridian, Oregon, is strictly conformable to the original Field Notes of the survey thereof on file in this Office, which have been examined and approved.

U. S. Surveyor-General's Office,
Portland, Oregon,

Aug. 11, 1881

James C. Tolman
Surveyor-General of Oregon.