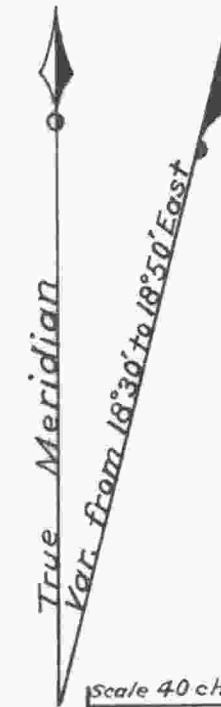
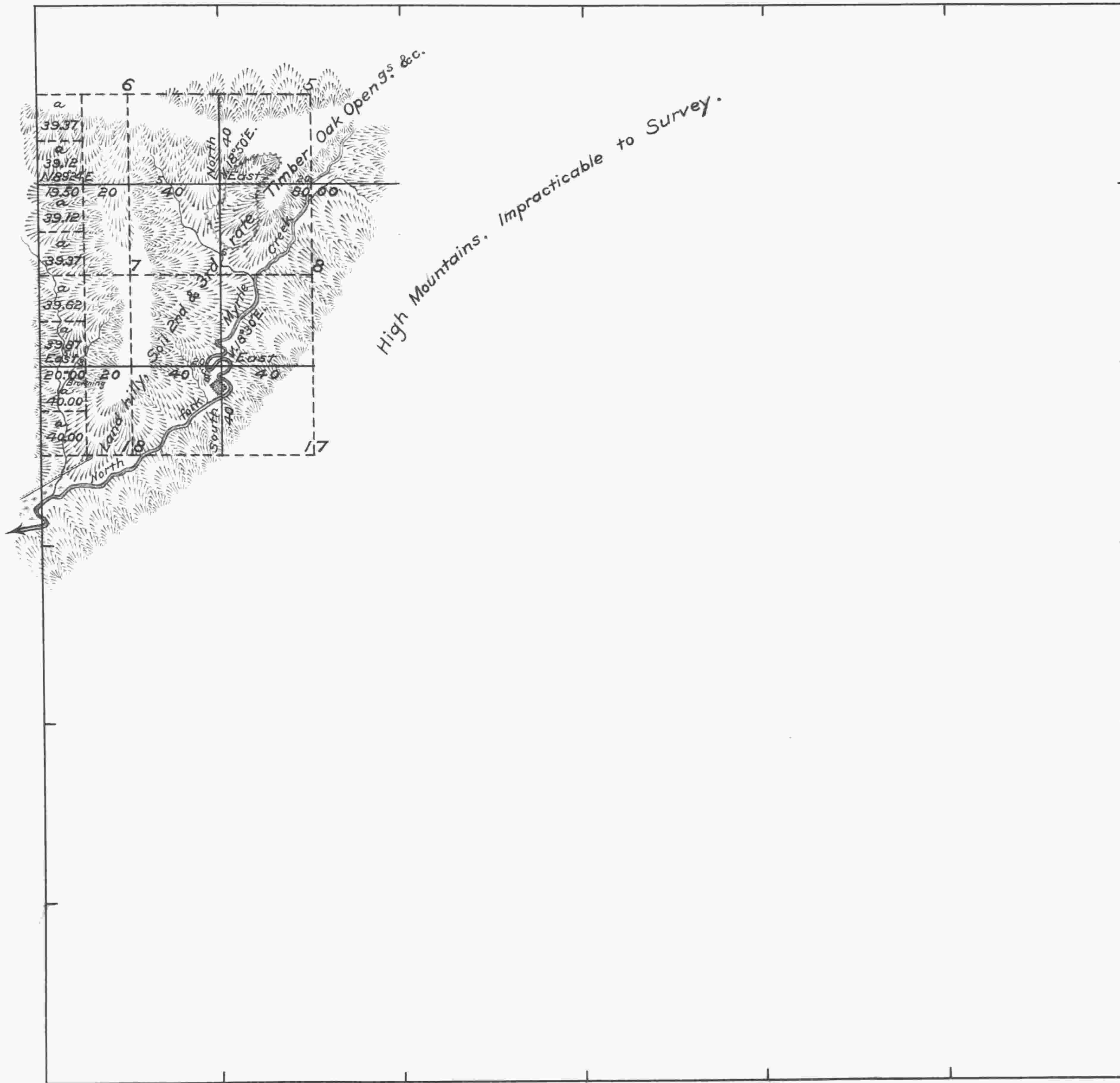


ADDENDA TO TOWNSHIP No. 29 SOUTH RANGE No. 4 WEST WILLAMETTE MERIDIAN, OREGON.



Scale 40 chains to an inch

Surveys designated	By whom surveyed	Contract		Amt. of surveys			When surveyed
		No.	Date	Miles	chains	links	
Subdivisions	Dennis Hathorn	73	June 8th, 1857	05	39	50	February 20th. 1858
Total number of	Acres 1916.47						

The above Map of Addenda to Township No. 29 South of Range No. 4 West of the Willamette Meridian, Territory of Oregon is strictly conformable to the field notes of the survey thereof on file in this office which have been examined and approved.

Surveyor General's Office  
Salem February 20th. 1858  
(Signed)

John S. Zieber  
Sur. Gen. of Oregon.

Public Survey Office,  
Portland, Ore. Apr. 25, 1928  
I certify the above to be a  
correct copy of the original  
plat on file in this office.

Joseph A. Lawrence  
Office Cadastral Engineer.