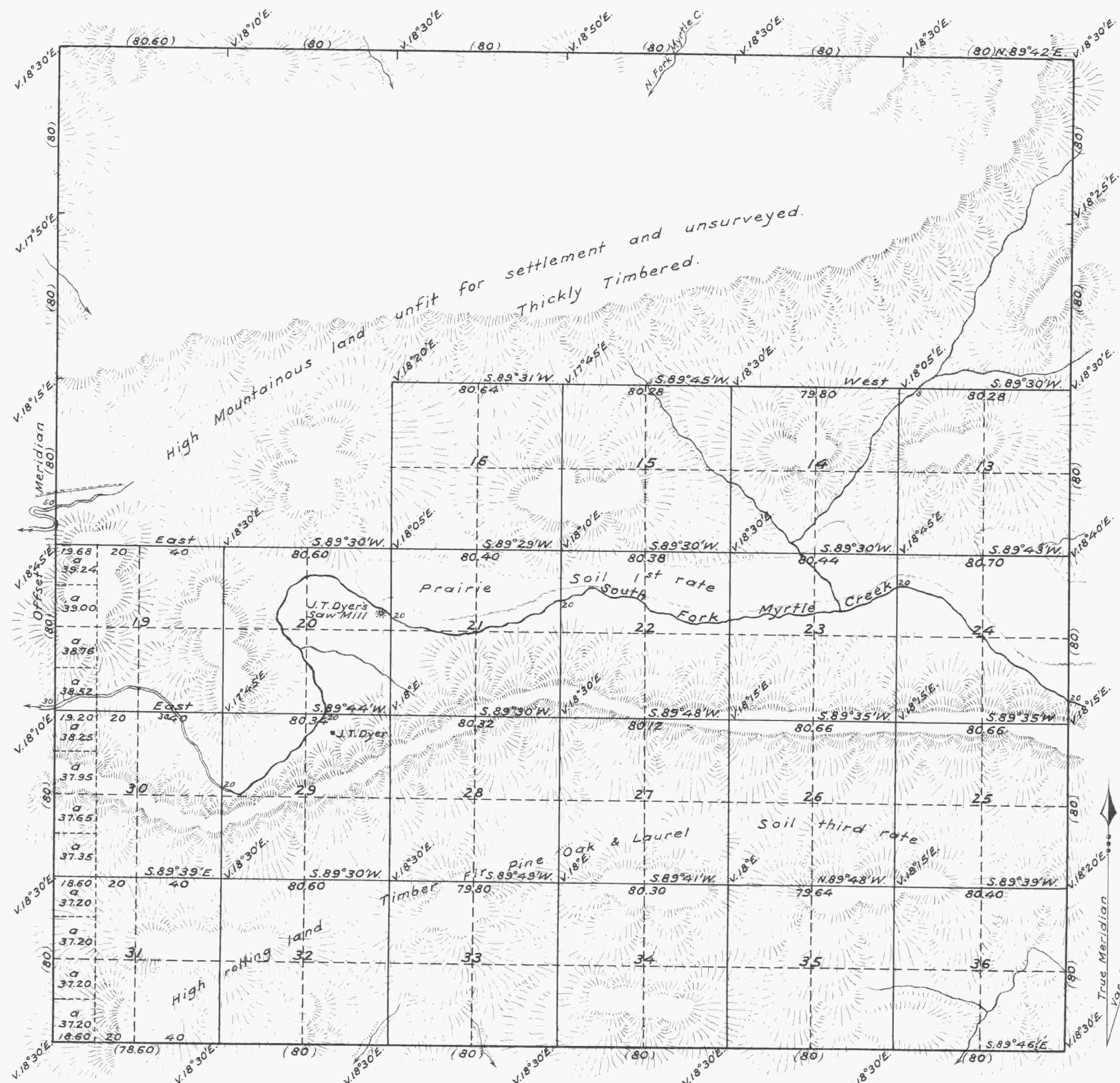


Township No 29 South, Range No 4 West, Willamette Meridian, Oregon.



Scale: 40 chains to an inch.

Surveys designated	By whom surveyed	Contract		Amt. of surveys			When surveyed	When charged in the Sur. Gen <sup>l</sup> s. Accounts.
		No.	Date.	Miles	chains	links		
Township Lines	Nathaniel Ford	44	May 30th, 1854.	11	78	60	March 9th, 1855.	1st. Qr., 1855.
Subdivisions	Nathaniel Ford	44	May 30th, 1854.	41	03	84	March 9th, 1855.	1st. Qr., 1855.
Total number of Acres in Township		14055.52						

The above Map of Frao<sup>l</sup>. Township No. 29 South of Range No. 4 West of the Willamette Meridian, Territory of Oregon, is strictly conformable to the field notes of the survey thereof on file in this office, which have been examined and approved. Surveyor General's Office, Salem, March 9th, 1855, (signed) C. K. Gardner, Surv. Gen of Oregon.

Public Survey Office, Portland, Oregon, September 14, 1928  
 I certify the above to be a correct copy of the original plat on file in this office.  
*Joseph A. Goung*  
 Office Cadastral Engineer.

G.L.F. Copy