

FILED
 Date: 2/6/2014 By: JC
 This survey consists of:
 Map: T29-3W 2014-1
 Narrative: VOL 58 PAGES
 Corner Rpt: 23024-23034

DOUGLAS COUNTY
 SURVEYOR

TOWNSHIP 29 SOUTH, RANGE 3 WEST, OF THE WILLAMETTE MERIDIAN, OREGON
 DEPENDENT RESURVEY AND SUBDIVISION OF SECTION 3

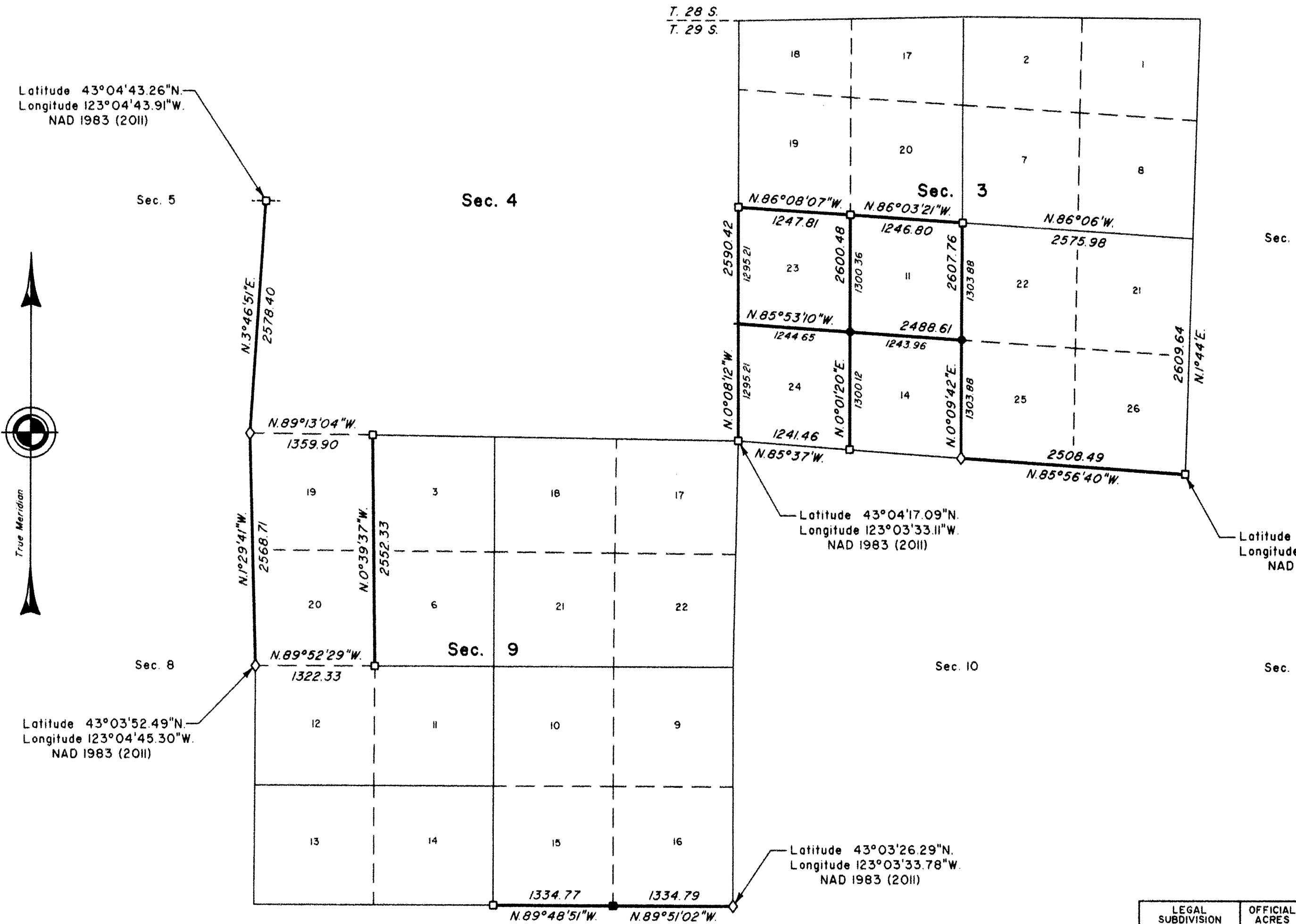
A history of surveys, corner descriptions and other relevant information are contained in the field notes.

This plat represents the dependent resurvey of portions of the subdivisional lines and the subdivision of section lines of sections 3 and 9, designed to restore the corners in their true original locations according to the best available evidence, and the further subdivision of section 3, Township 29 South, Range 3 West, Willamette Meridian, Oregon.

Official areas based on the measurements of this survey have been returned for Federal interest land where indicated. Aliquot part legal subdivisions retain their aliquot characteristics and refer to precisely the same land as that which was previously identified by its original survey or description. A lot can only be subdivided by survey or supplemental plat. Except as indicated hereon, the lottings and areas are as shown on the plat approved August 11, 1881, and the plats accepted July 8, 1966 and May 1, 1969.

Survey executed by George M. Winter, Cadastral Surveyor, beginning October 1, 2012, and completed November 8, 2012, pursuant to special instructions approved March 14, 2012, for Group No. 2654, Oregon.

Note:
 The lightweight lines with bearings and distances of section 3 were surveyed by Donald R. Beck in 1964-65.



Latitude 43°04'43.26"N.
 Longitude 123°04'43.91"W.
 NAD 1983 (2011)



Latitude 43°03'52.49"N.
 Longitude 123°04'45.30"W.
 NAD 1983 (2011)

Latitude 43°04'17.09"N.
 Longitude 123°03'33.11"W.
 NAD 1983 (2011)

Latitude 43°04'13.49"N.
 Longitude 123°02'26.06"W.
 NAD 1983 (2011)

Latitude 43°03'26.29"N.
 Longitude 123°03'33.78"W.
 NAD 1983 (2011)

LEGEND

- ◊ Original corner previously remonumented
- Corner previously established or reestablished
- Corner previously established or reestablished; remonumented this survey
- Corner established or reestablished this survey
- + Corner point calculated, no monument set

UNITED STATES DEPARTMENT OF THE INTERIOR
 BUREAU OF LAND MANAGEMENT

Portland, Oregon

This plat is strictly conformable to the approved field notes, and the survey, having been correctly executed in accordance with the requirements of law and the regulations of this Bureau, is hereby accepted.

For the Director

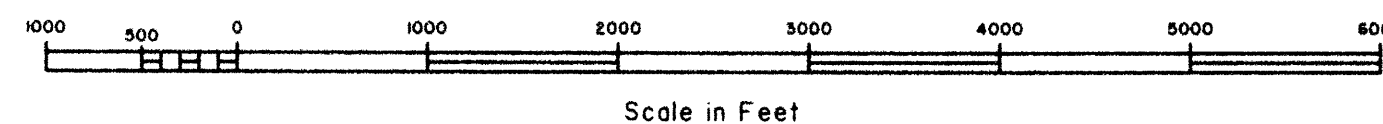
Mary J. M. Hunt

Chief Cadastral Surveyor of Oregon

November 21, 2013

Date

LEGAL SUBDIVISION	OFFICIAL ACRES
SECTION 3	
LOT 11	37.14
LOT 21	38.31
LOT 22	38.26
LOT 23	37.04
LOT 24	36.93
LOT 25	37.74
LOT 26	37.79
TOTAL AREA	263.21
FEDERAL INTEREST LANDS RESURVEYED IN SECTION 3	



OFFICIALLY FILED: 12/24/2013