

TOWNSHIP 29 SOUTH, RANGE 3 WEST, OF THE WILLAMETTE MERIDIAN, OREGON

DEPENDENT RESURVEY

FILED
 Date: 9/20/2011 By: JC
 This survey consists of:
 Map: VOL 57
 Narrative: PAGES
 Corner Rpt: 22547-22559

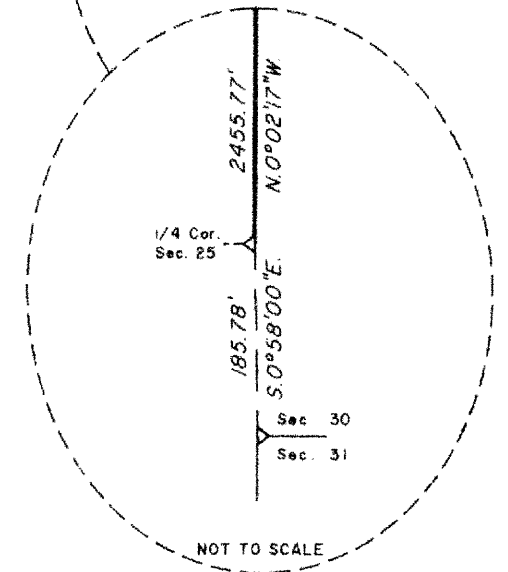
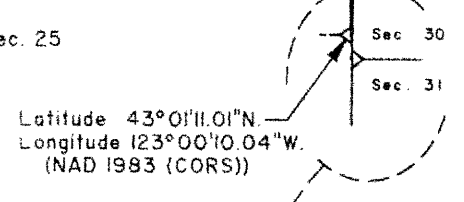
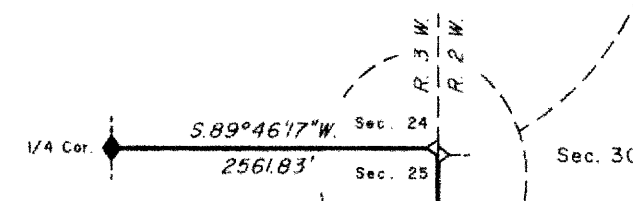
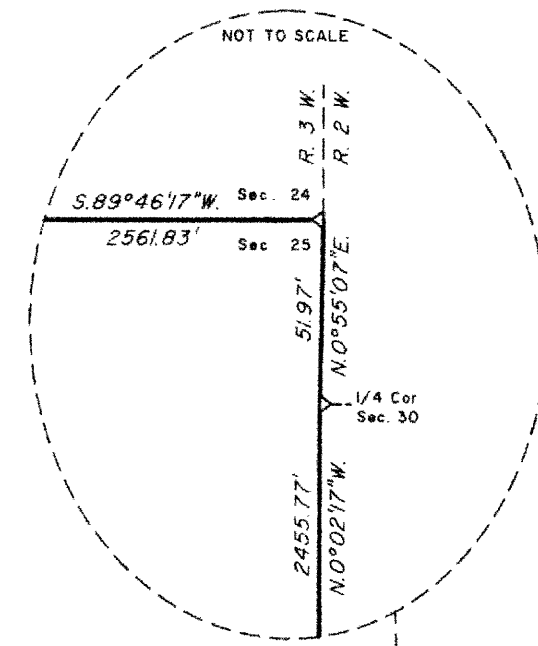
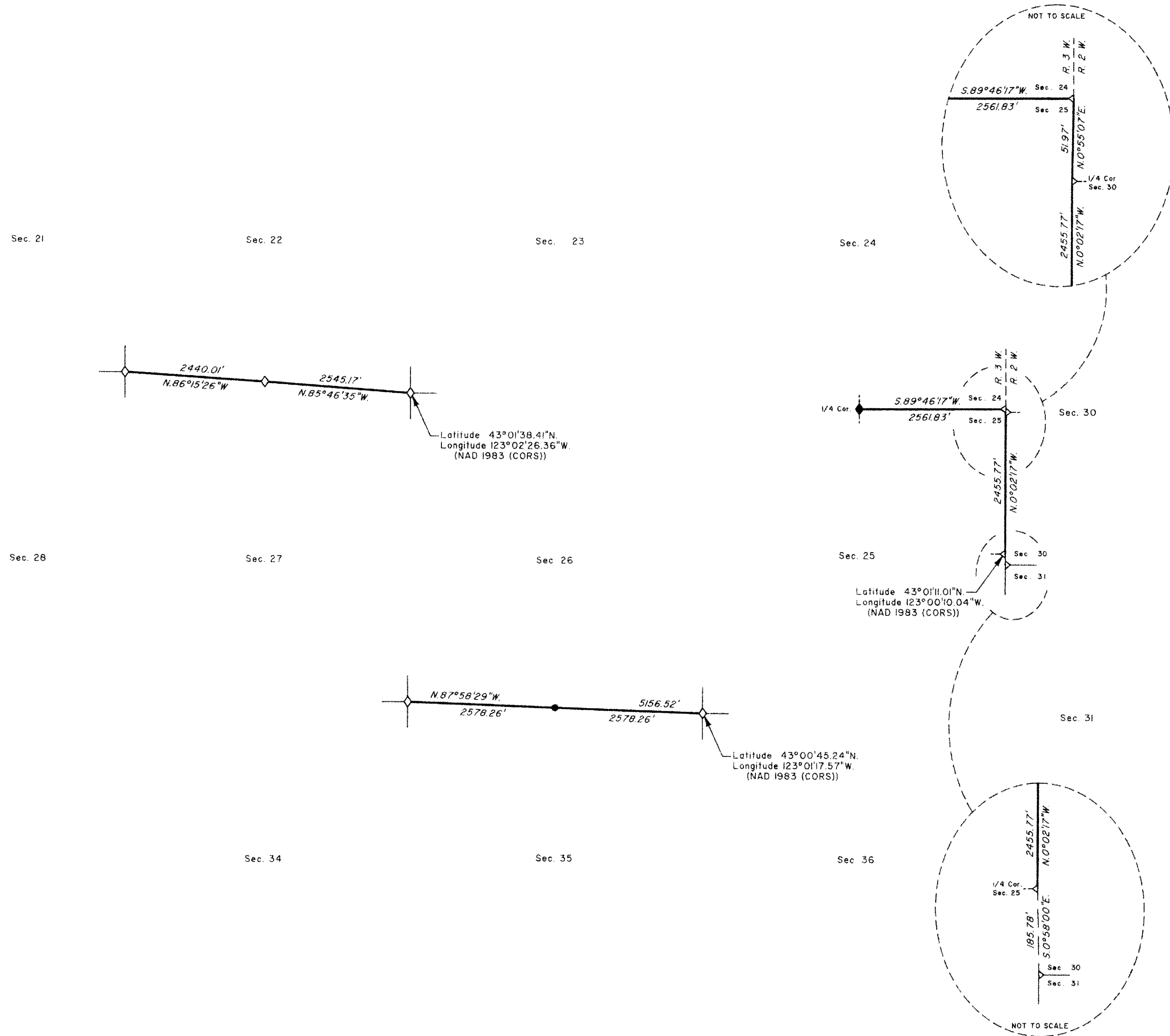
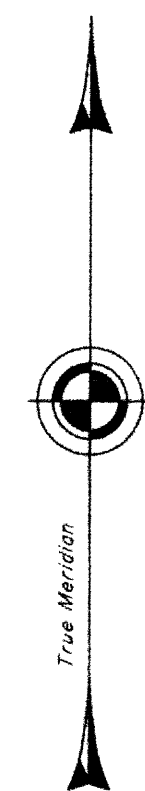
DOUGLAS COUNTY
 SURVEYOR

A history of surveys is contained in the field notes.

This plat represents the dependent resurvey of a portion of the east boundary and subdivisional lines, T. 29 S., R. 3 W., Willamette Meridian, Oregon, designed to restore the corners in their true original locations according to the best available evidence.

The survey was performed utilizing both conventional (directly measured angles and distances) and NAVSTAR Global Positioning System (GPS) satellite techniques. The GPS measurements utilized dual frequency, carrier phase GPS receivers. The baselines were computed in and adjusted by least squares analysis using Trimble Geomatics Office (TGO). Conventionally measured distances and directions have been adjusted by Cadastral Measurement Management for Windows (WinCMM), computer software that incorporates a least squares adjustment routine. The adjusted bearings and distances are reported to the nearest second and 0.01 foot.

This survey was executed by A. Bert Skeesick, Cadastral Surveyor, and Robert H. Browning, Surveying Technician, beginning March 19, 2007, and completed May 10, 2007, pursuant to Special Instructions dated January 23, 2007, under Group Number 2157, Oregon.



LEGEND	
◇	Original corner previously remonumented
◆	Original corner remonumented this survey
●	Corner established or reestablished this survey

UNITED STATES DEPARTMENT OF THE INTERIOR
 BUREAU OF LAND MANAGEMENT

Portland, Oregon

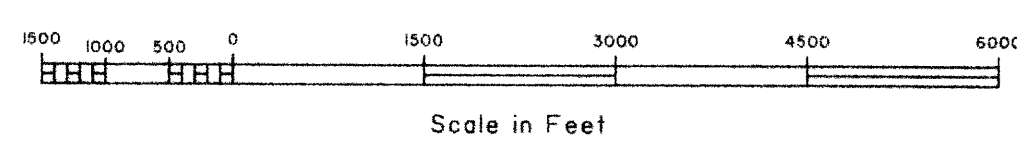
This plat is strictly conformable to the approved field notes, and the survey, having been correctly executed in accordance with the requirements of law and the regulations of this Bureau, is hereby accepted.

For the Director

Mary J. M. Hantel

Chief Cadastral Surveyor of Oregon

June 15, 2011
 Date



OFFICIALLY FILED: 8/12/2011