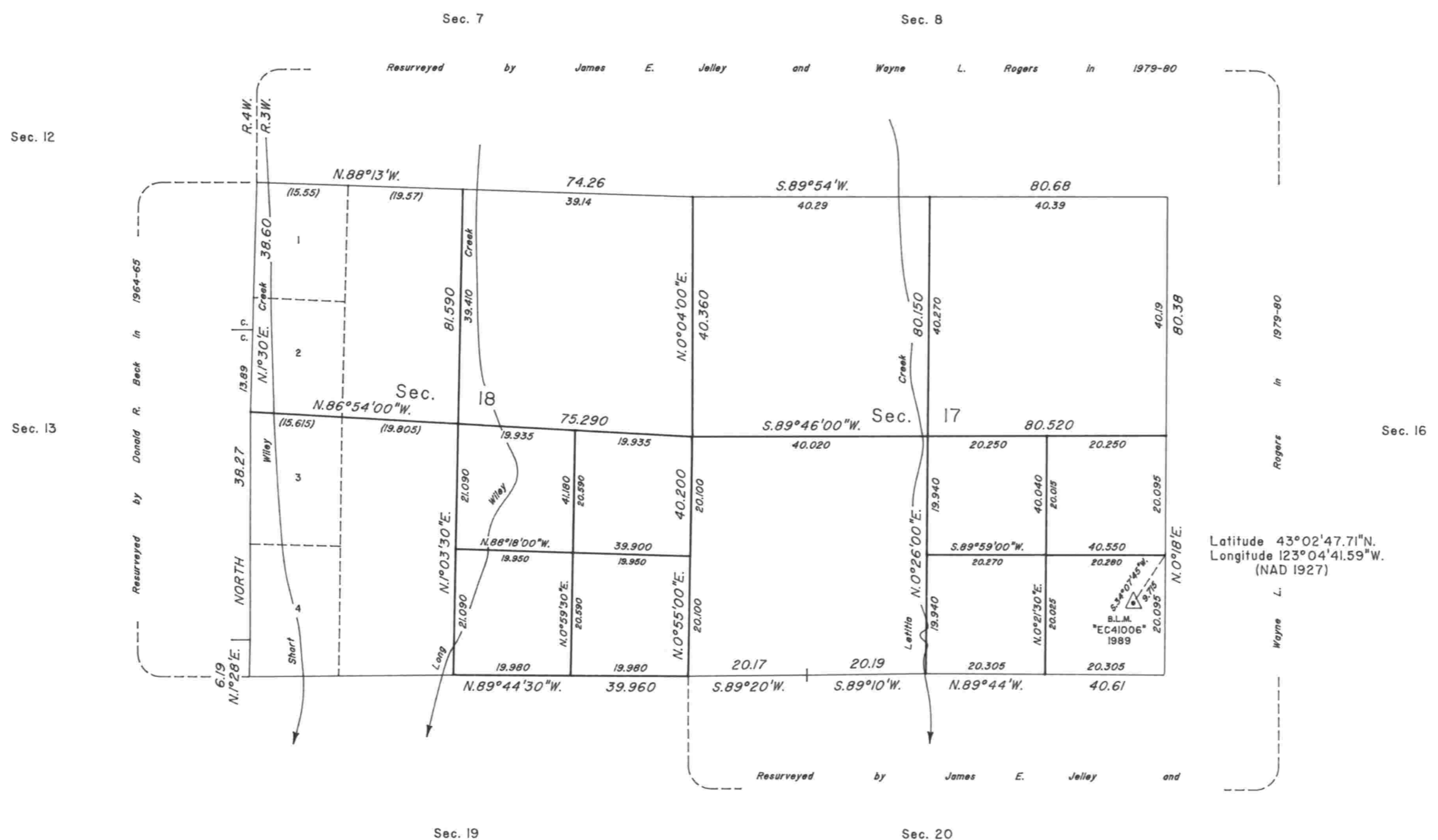
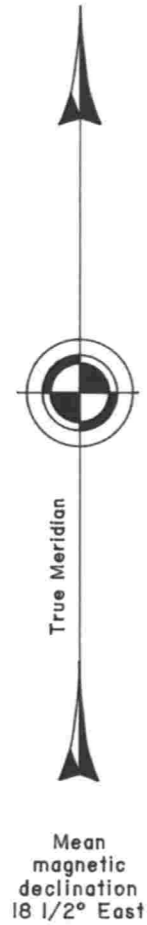


TOWNSHIP 29 SOUTH, RANGE 3 WEST, OF THE WILLAMETTE MERIDIAN, OREGON

DEPENDENT RESURVEY AND SUBDIVISION OF SECTIONS 17 AND 18



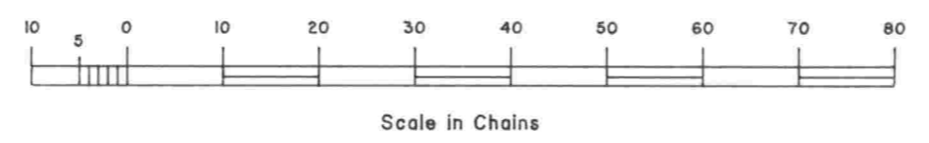
A history of surveys is contained in the field notes.

This plat represents a dependent resurvey of a portion of the subdivisional lines, T. 29 S., R. 3 W., Willamette Meridian, Oregon, designed to restore the corners in their true original locations according to the best available evidence, and the subdivision of sections 17 and 18.

The lottings and areas are as shown on the plats approved February 20, 1858 and August 11, 1881.

The survey was executed by Dale T. Bedell, Cadastral Surveyor, beginning September 18, 1989, and completed April 24, 1990, pursuant to Special Instructions dated August 2, 1989, under Group Number 1503, Oregon.

Timber in this area consists of fir, cedar, hemlock, yew, pine, alder, cherry, maple, oak, madrone, willow, ash and chinquapin.



UNITED STATES DEPARTMENT OF THE INTERIOR
BUREAU OF LAND MANAGEMENT

Portland, Oregon March 2, 1993

This plat is strictly conformable to the approved field notes, and the survey, having been correctly executed in accordance with the requirements of law and the regulations of this Bureau, is hereby accepted.

For the Director

Wayne M. Gardner
Chief Cadastral Surveyor of Oregon