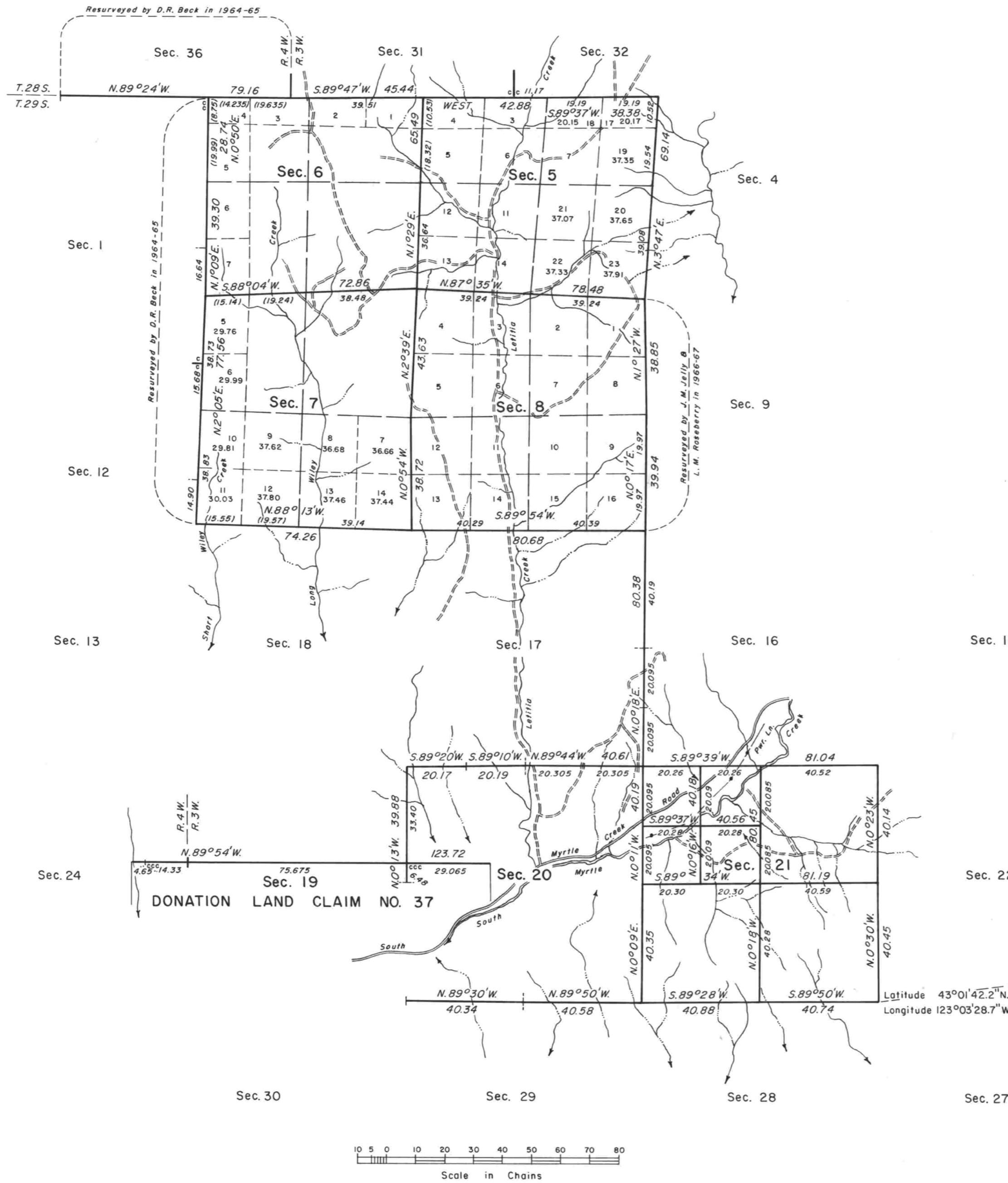


TOWNSHIP 29 SOUTH, RANGE 3 WEST, OF THE WILLAMETTE MERIDIAN, OREGON.

DEPENDENT RESURVEY AND SUBDIVISION OF SECTION 21



A history of surveys is contained in the field notes.

This plat represents a dependent resurvey of a portion of the north boundary, subdivisional lines, and Donation Land Claim No. 37, T. 29 S., R. 3 W., Willamette Meridian, Oregon, designed to restore the corners in their true original locations according to the best available evidence, and the subdivision of section 21.

The lottings and areas are as shown on the plats approved February 20, 1858 and August 11, 1881.

The survey was executed by James E. Jelly and Wayne L. Rogers, Cadastral Surveyors, beginning October 1, 1979 and completed April 10, 1980, pursuant to Special Instructions dated September 20, 1979, for Group 997, Oregon.

Timber in this area consists of fir, maple, oak, yew, cedar, hemlock, madrone, ash, and pine.

"DAY"
1978
N. 82° 05' E. 82.11
DOUGLAS COUNTY
SURVEYORS OFFICE

UNITED STATES DEPARTMENT OF THE INTERIOR
BUREAU OF LAND MANAGEMENT
Portland, Oregon May 3, 1983

This plat is strictly conformable to the approved field notes, and the survey, having been correctly executed in accordance with the requirements of law and the regulations of this Bureau, is hereby accepted.

For the Director
William W. Glenn
Chief Cadastral Surveyor of Oregon