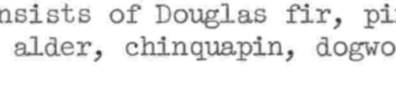
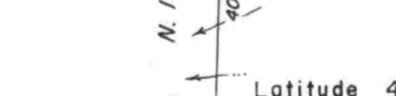
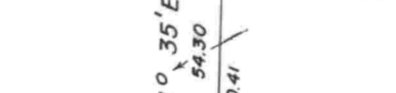
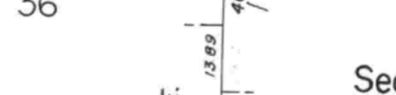
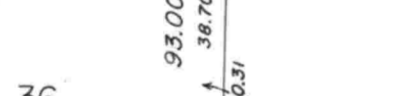
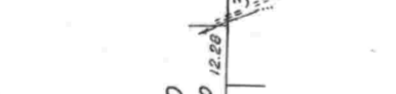
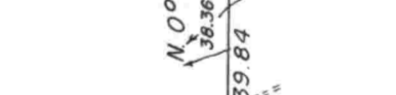
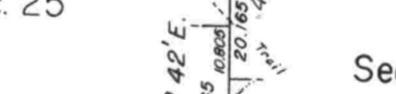
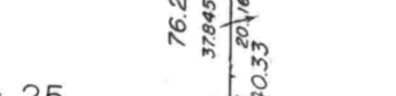
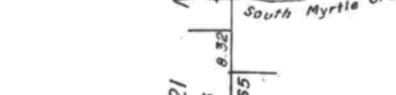
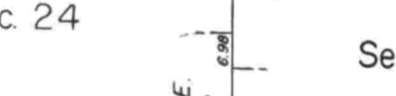
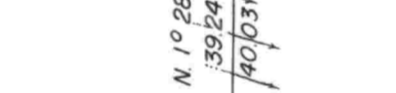
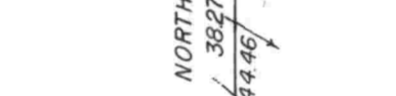
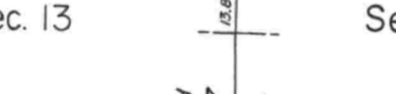
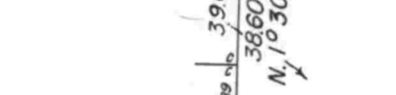
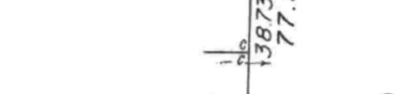
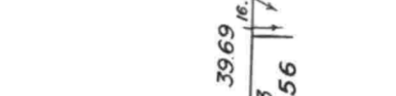
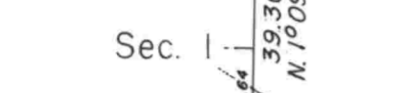
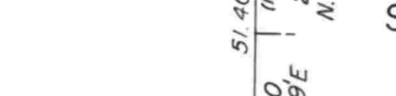
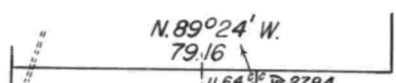


# TOWNSHIP 29 SOUTH, RANGE 3 WEST, OF THE WILLAMETTE MERIDIAN, OREGON.

## DEPENDENT RESURVEY AND SUBDIVISION OF SECTION 3

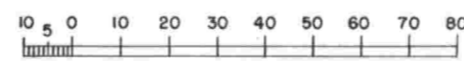
T. 28 S., R. 4 W.

Sec 36



Mean Magnetic Declination 20° 10' East

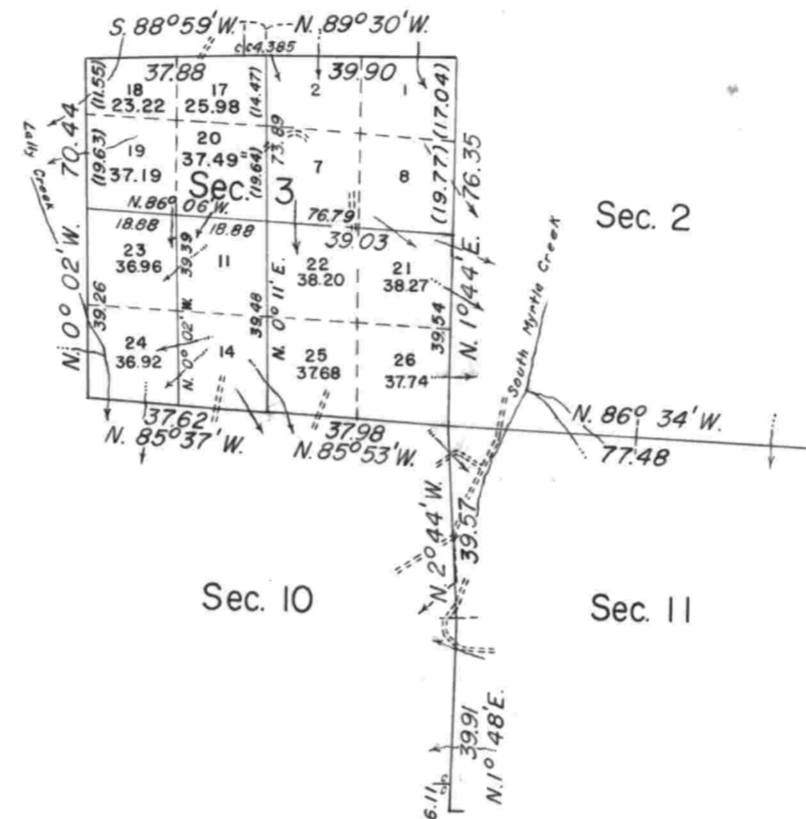
Latitude 43° 00.0' N.  
Longitude 123° 07.0' W.



Chains

Area resurveyed: 571.30 Acres

Timber in this area consists of Douglas fir, pine, white fir, hemlock, cedar, maple, madrone, alder, chinquapin, dogwood, yew, and live oak.



This plat represents a retracement and reestablishment of a portion of the south boundary of T. 28 S., R. 4 W., the west boundary, a portion of the north boundary and subdivisional lines, designed to restore the corners in their true original locations according to the best available evidence, and, a subdivision of section 3. Excepting as new or modified vacant subdivisions are shown hereon, the lottings and areas are as shown on the plat approved August 11, 1881.

The west boundary was surveyed by Nathaniel Ford in 1855. In 1858, Dennis Hathorn retraced the south three miles of the west boundary, and surveyed a portion of the subdivisional lines. In 1881, William H. Byars retraced the west boundary, completed the subdivisional lines, and surveyed the north boundary. In 1910, William N. Gibb retraced the east five miles of the north boundary.

Survey executed by Donald R. Beck, July 16, 1964, to April 19, 1965, under Special Instructions dated July 2, 1964, which provide for the surveys included under Group No. 554, Oregon.

UNITED STATES DEPARTMENT OF THE INTERIOR  
BUREAU OF LAND MANAGEMENT  
Washington, D. C. July 8, 1966

This plat is strictly conformable to the approved field notes, and the survey, having been correctly executed in accordance with the requirements of law and the regulations of this Bureau, is hereby accepted.

For the Director

*Ed Livingston*  
Chief, Division of Engineering