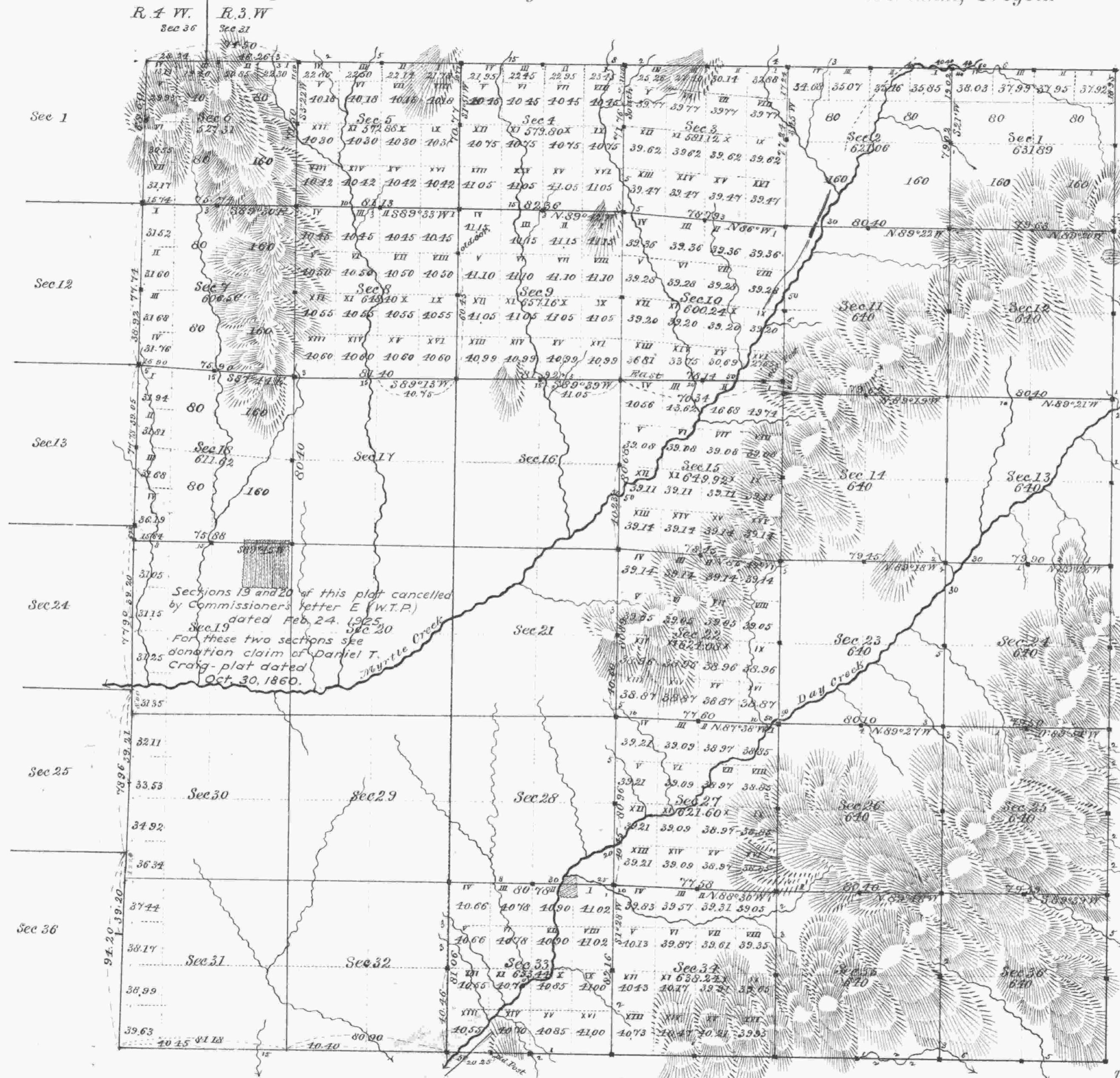


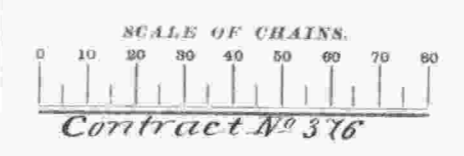
Township No. 29 South Range No. 3 West Willamette Meridian, Oregon.



General Description
 The lands in this Township are generally mountainous and 2^d and 3^d rate, except small narrow bottoms along the Creeks which are 1st rate. The timber is generally 1st rate Fir, Cedar, Pine, Oak, Lau-
 rel Maple, and Ash.

Surveys Designated.	By Whom Surveyed.	Date of Contract.	Amount of Surveys.			When Surveyed.	Magnetic Declination.
			Miles.	Chains.	Links.		
Tr. Lines W. Bdy	Nathaniel Ford	May 30, 1854					
do do S. Bdy in part	Deavis Hathorn	June 8, 1857				16° E	
do do S. E. 1/4 N. Bdy	W. H. Byars	January 22, 1881					
Re-tracings	do do do	do do do	7	77	26	18° E	
Subdivisions	do do do	do do do	37	37	13	18° E	

The above Map of the Subdivisional lines of Township No. 29 South, Range No. 3 West, Willamette Meridian, Oregon, is strictly conformable to the original Field Notes of the survey thereof on file in this Office, which have been examined and approved.



U. S. Surveyor-General's Office,
 Portland, Oregon,
 Aug. 11, 1881
James C. Holman
 Surveyor-General of Oregon.