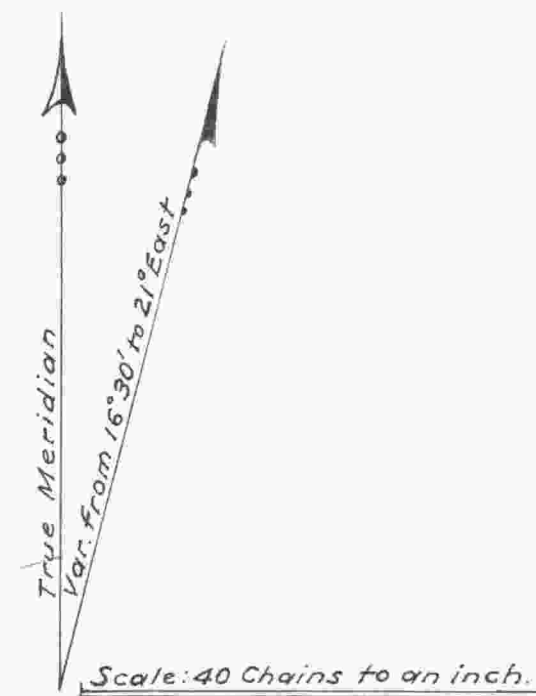
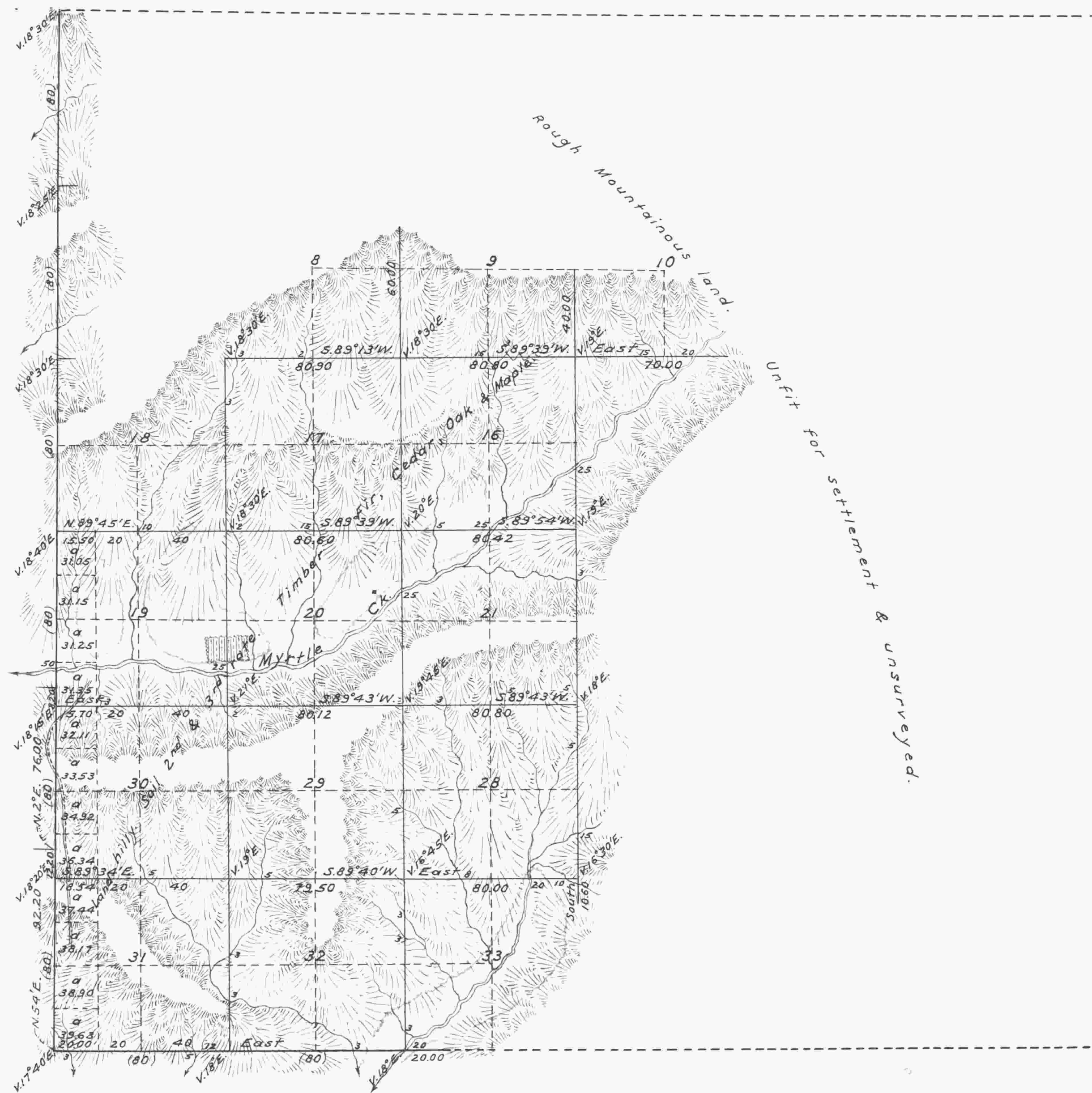


Township No. 29 South, Range No. 3 West, of the Willamette Meridian, Oregon.



Surveys designated	By whom surveyed	Contract		Amt. of Surveys			When Surveyed
		No.	Date	Miles	chains	links	
Township Lines	Dennis Hathorn	73	June 8 th , 1857	02	20	00	February 20 th , 1858
Subdivisions	Dennis Hathorn	73	June 8 th , 1857	24	13	48	February 20 th , 1858
Total number of Acres		7615.84					

The above Map of Fractional Township No. 29 South, of Range No. 3 West, of the Willamette Meridian, Territory of Oregon, is strictly conformable to the field notes of the survey thereof on file in this office, which have been examined and approved.
 Surveyor General's Office,
 Salem, February 20th, 1858. (signed) John S. Zieber
 Sur. Gen. of Oregon.

Public Survey Office,
 Portland, Oregon,
 September 9, 1935.
 I certify this to be a correct copy of the original plat on file in this office.

Joseph A. Garrow
 Office Cadastral Engineer.