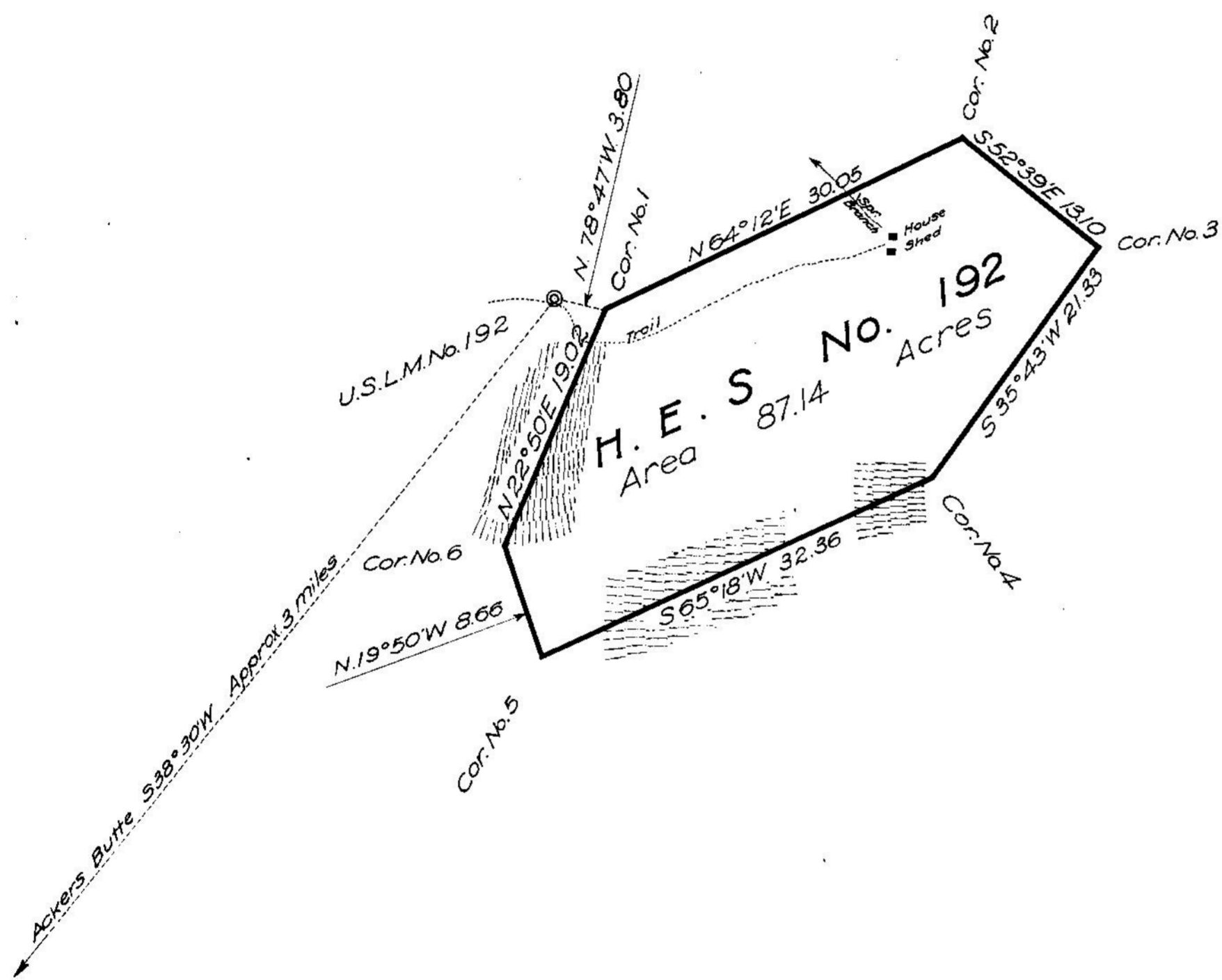


T. 29 S., R. 2 E.  
Unsurveyed



Plat of  
**HOMESTEAD  
ENTRY SURVEY**  
No. 192  
in the  
**UMPQUA  
NATIONAL FOREST**  
in  
N.W. Part of unsurveyed T.29S.,R.2.E.,  
of the  
**WILLAMETTE MERIDIAN  
OREGON**

This plat of Homestead Entry Survey No. 192 State of Oregon is strictly conformable to the field notes thereof on file in this office, which have been examined and approved.

U.S. Surveyor General's Office  
Portland, Oregon  
May 12, 1917

*Edward Worth*  
U.S. Surveyor General

ACCEPTED BY THE HON. COMMISSIONER G. L. O. October 5, 1917

Patent Issued \_\_\_\_\_  
Patent No. \_\_\_\_\_  
Serial H. E. No. \_\_\_\_\_  
Land Office \_\_\_\_\_  
N.W.C.

SCALE 10 chains to 1 inch

Surveys Designated	By whom Surveyed	Inst. Cont. Group		When Surveyed		Date of Approval
		No.	Date	Began	Completed	
H.E. Survey No. 192	Frederick W. Rose Surveyor - Forest Service	192	Feb. 29, 1916	Sept. 5, 1916	Sept. 6, 1916	May 12, 1917

H.E. Survey No.	192	Areas in Acres
In Section		Conflicts
In Section		
In Section		
In Section		
Total	87.14	

Act of June 11, 1906    Act of Aug. 27, 1916  
List No. 6-1721    Dated May 1, 1915  
Latitude 43° 05' N    Observations at  
Longitude 122° 37' W    Corner No. 1  
Mean Mag. Decl. 20° 18' E