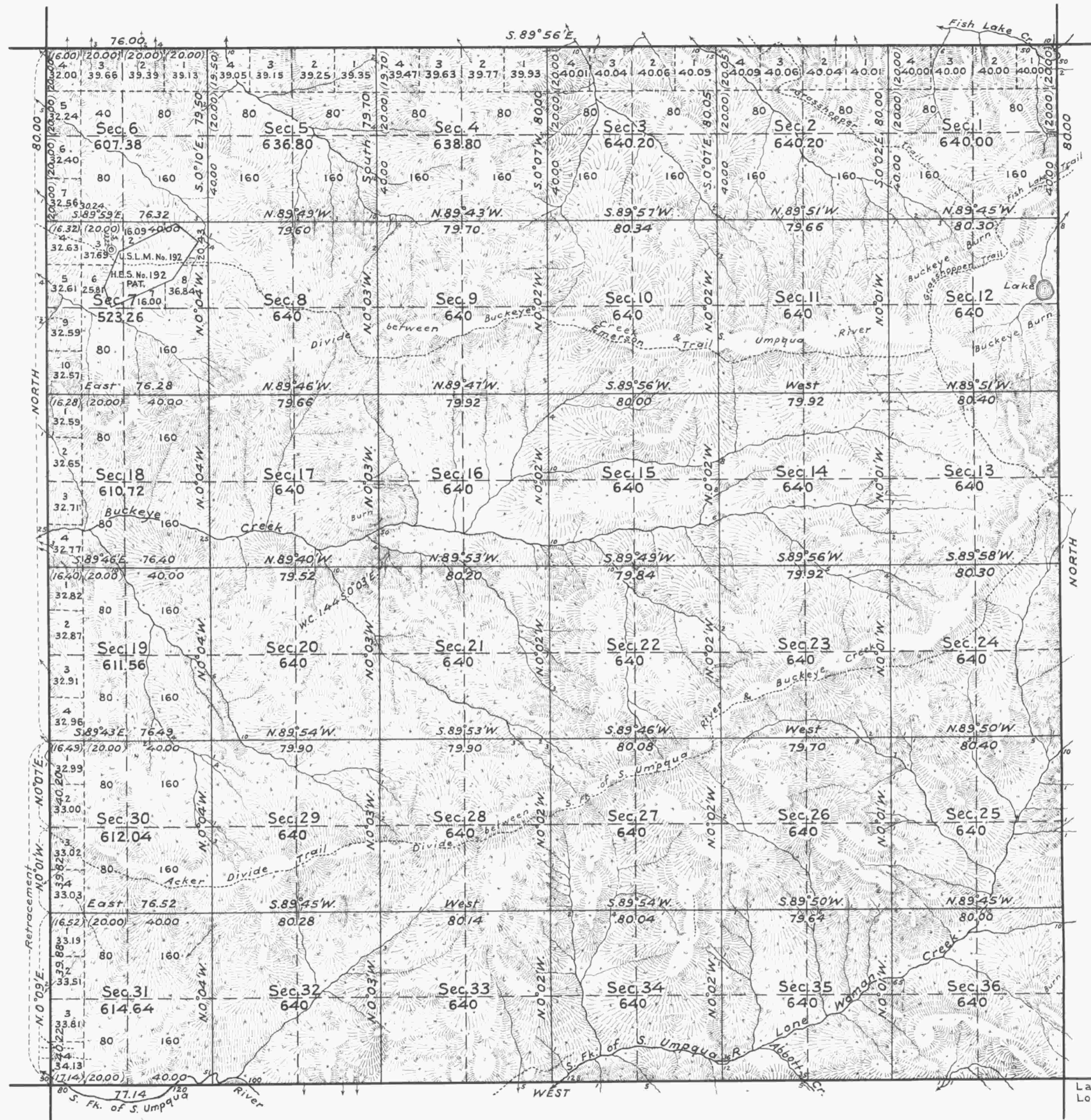


TOWNSHIP N^o 29 SOUTH, RANGE N^o 2 EAST OF THE WILLAMETTE MERIDIAN, OREGON.



Lat. 43°00'N.
Long. 122°32'W.

Mean Magnetic Declination, 20°45'E. Scale: 40 Chains to an Inch. Area Surveyed, 22,775.60 Acres.

LINES DESIGNATED	BY WHOM SURVEYED	No	GROUP DATE	MILEAGE		WHEN SURVEYED		
				MLS.	CHS.	BEGUN	COMPLETED	
Exterior	Fred Mensch U.S.C.E. Lincoln E. Wilkes "	62	Dec. 21, 1920	17	73.14	Oct. 17, 1923	Sept. 17, 1926	
Subdivisional				59	60.82	" 18, "	" " "	
Meander								
Miscellaneous					15.62	Aug. 19, 1926	Aug. 27, "	

Office of U.S. Supervisor of Surveys
 Denver, Colorado, June 14, 1927.
 The above plat of Township No. 29 South, Range No. 2 East of the Willamette Meridian, Oregon, is strictly conformable to the field notes of the survey thereof which have been examined and approved.

Frank A. Pimmon
 U.S. Supervisor of Surveys.

DEPARTMENT OF THE INTERIOR
 GENERAL LAND OFFICE
 Washington, D.C., July 23, 1927.
 The survey represented by this plat having been correctly executed in accordance with the requirements of law and the regulations of this office, is hereby accepted.

D. C. Carrott
 Acting Assistant Commissioner

Handwritten initials and date:
 C.W.P.
 1927