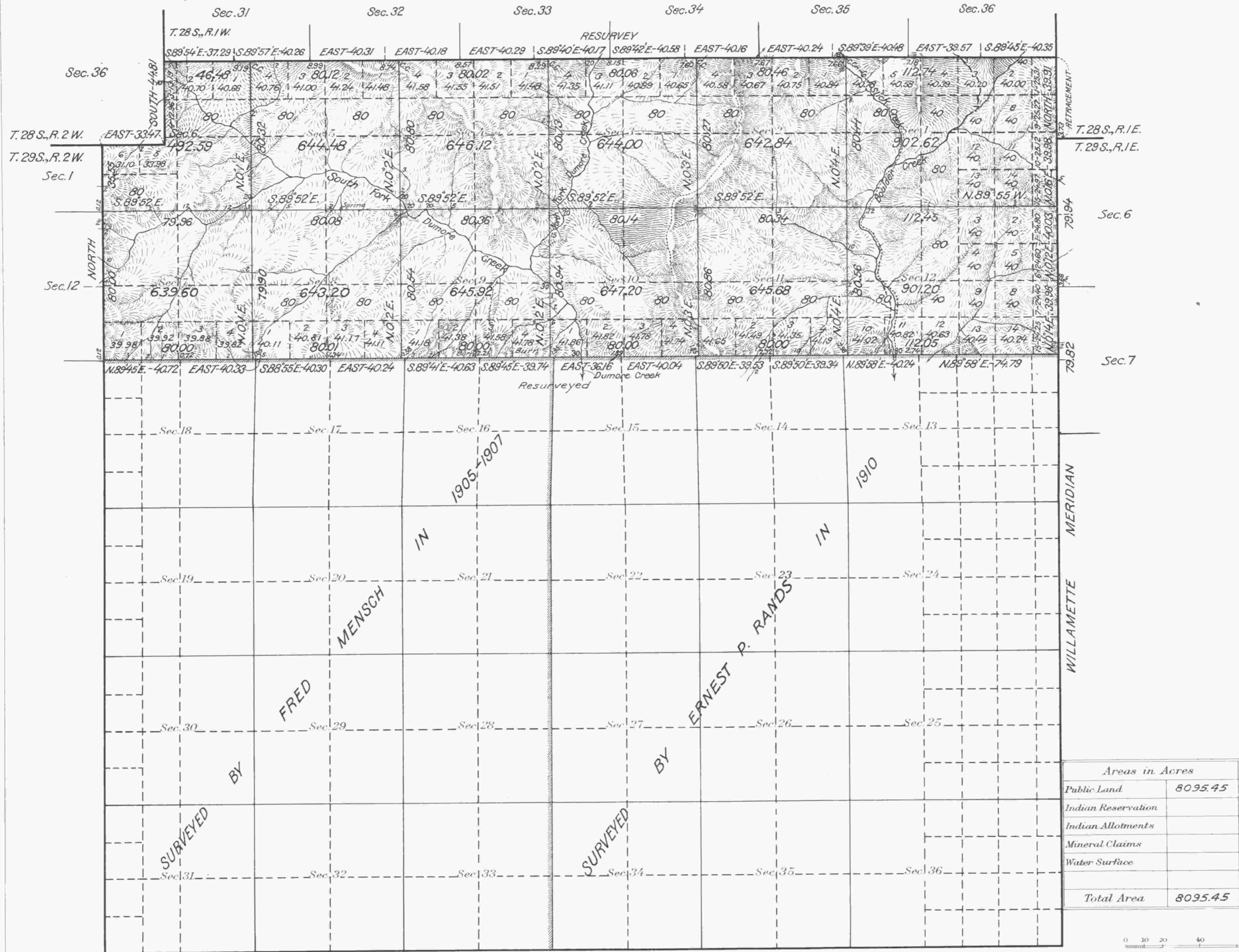


Township No. 29 South Range No. 1 West of the Willamette Meridian, Oregon.



Scale 40 Chains to an inch

Mean Magnetic Declination 21° 30' E.

Latitude 43° 02' N. At camp near Cor. Secs. 13, 18, 19 & 24 on W. Bdy. T. 29 S., R. 1 W.

Longitude 122° 52' W.

The above map of Township No. 29 South Range No. 1 West of the Willamette Meridian Oregon is strictly conformable to the field notes of the survey thereof on file in this office, which have been examined and approved.

U. S. Surveyor General's Office.

Portland, Oregon Sept. 29, 1923.

Wesley W. Carviness
Surveyor General of Oregon.

Surveys Designated	By Whom Surveyed	Group		Amount of Surveys			When Surveyed	
		No.	Date	Mls.	chs.	fks.	Begun	Completed
Resur. N. Bdy.	Fred Mensch.	30	June 7, 1922.	5	79	88	Sept. 10-16, 1922	Oct. 5-6, 1922
Sub. portion N. Bdy.	"	"	"	0	33	47	" 9, "	Sept. 9, "
" " W. "	"	"	"	0	44	81	" " "	" " "
Retract. " E. "	"	"	"	0	43	64	Oct. 5, "	Oct. 5, "
Subdivisions	"	"	"	22	70	75	Sept. 6-8, "	" 1-6 "
Connections	"	"	"	0	41	48	" 16, "	" 6, "
Willamette Mer. by Fred Mensch-Group 62 in 1921 and Homer D. Angell under Contract 746 in 1902.								
Portions of W. Tp. Bdy. by Elmer F. Strickler-Group 36 in 1917 and Fred Mensch under Contract 757 in 1905.								
N. Tp. Bdy. by Homer D. Angell under Contract 746 in 1902. - Portion of Willamette Mer. by Fred Mensch-Contract 797 in 1910.								
Portions of Subdivisions by Ernest P. Rands-Contract 790 in 1910 and Fred Mensch under Contract 757 in 1907.								