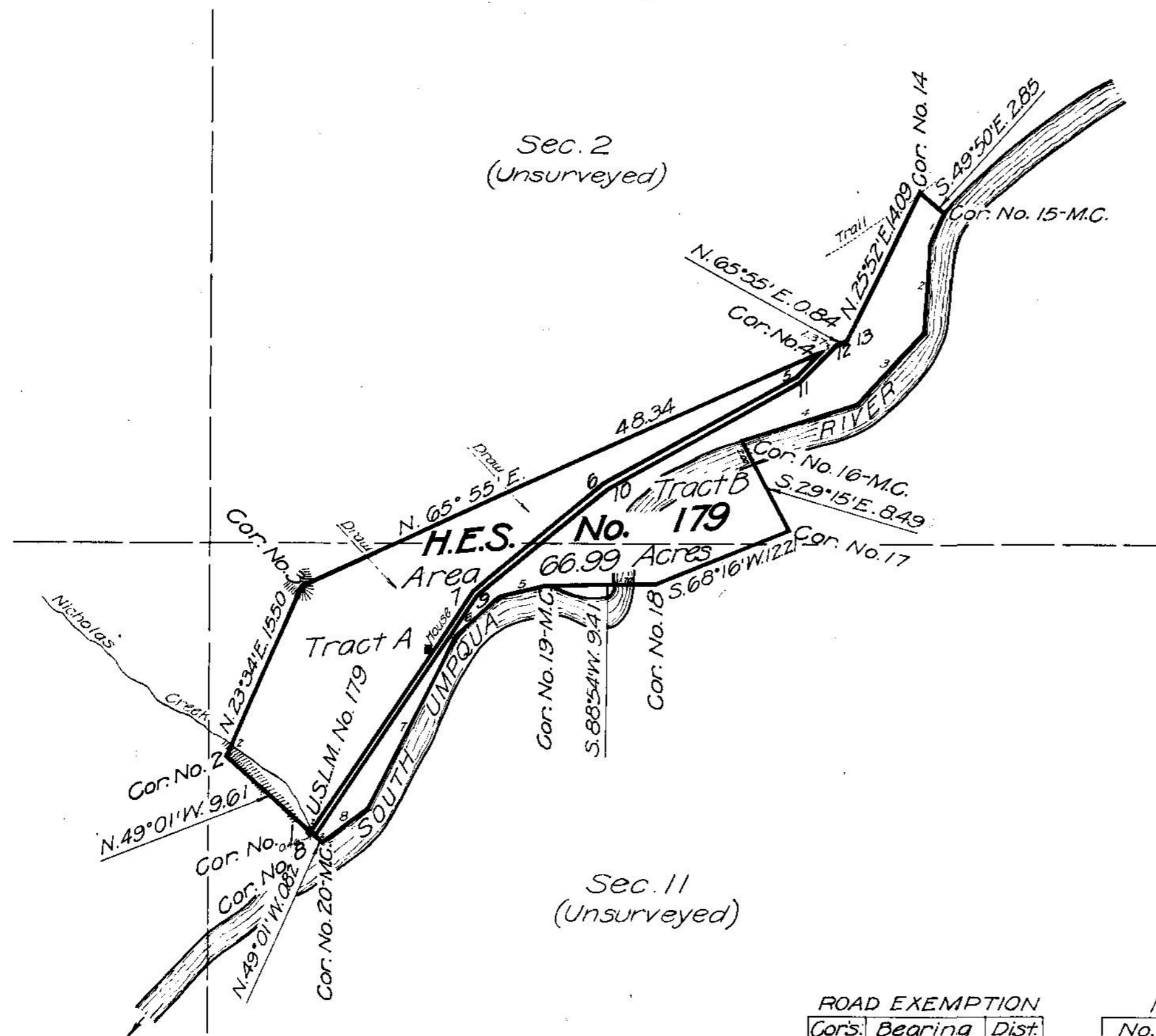


Survey accepted Feb. 26, 1918
G.L.O.

T. 29 S., R. 1 E.
(Partly Surveyed)

Plat of
**HOMESTEAD
ENTRY SURVEY**
No. 179
in the
**UMPQUA
NATIONAL FOREST**
in approximate
Unsurveyed Sections 2 & 11
T. 29 S., R. 1 E.
(Partly Surveyed)
of the
**WILLAMETTE MERIDIAN
OREGON**



ROAD EXEMPTION		
Cor's	Bearing	Dist.
4-5	S. 46° 30' W.	3.29
5-6	S. 61° 09' W.	18.29
6-7	S. 50° 51' W.	14.21
7-1	S. 34° 06' W.	24.32
8-9	N. 34° 06' E.	24.32
9-10	N. 50° 51' E.	14.11
10-11	N. 61° 09' E.	18.31
11-12	N. 46° 30' E.	4.65

MEANDERS		
No.	Bearing	Dist.
1	S. 23° 30' W.	3.00
2	S. 4° 00' W.	7.20
3	S. 42° 15' W.	8.10
4	S. 72° 18' W.	10.36
5	S. 75° 00' W.	4.00
6	S. 49° 45' W.	5.00
7	S. 26° 30' W.	16.00
8	S. 53° 03' W.	5.01

Patent Issued _____
Patent No. _____
Serial H. E. No. _____
Land Office _____

This plat of Homestead Entry Survey No. 179 State of Oregon is strictly conformable to the field notes thereof on file in this office, which have been examined and approved.

U.S. Surveyor General's Office
Portland, Oregon.
June 29, 1917

Edward Worth
U.S. Surveyor General

SCALE 10 chains to 1 inch

Surveys Designated	By whom Surveyed	Inst., Cont. Group		When Surveyed		Date of Approval
		No.	Date	Began	Completed	
H.E. Survey No. 179	Frederick W. Rose Surveyor - Forest Service	179	Dec. 17, 1915.	Sept. 2, 1916.	Sept. 5, 1916.	June 29, 1917

Areas in Acres		Conflicts
H.E. Survey No. 179		
In Tract A	35.97	
In Tract B	31.02	
In Section		
Total	66.99	

Act of June 11, 1906		Act of Aug. 11, 1916.	
List No.	6-981	Dated	Feb. 19, 1914.
Latitude	43° 04' N.	Observations at	
Longitude	122° 40' W.	Corner No.	5
Mean Mag. Decl.	20° 13' E.		

In pencil on 4-590 B.