

TOWNSHIP 28 SOUTH, RANGE 8 WEST, OF THE WILLAMETTE MERIDIAN, OREGON

DOUGLAS COUNTY SURVEYOR

This plat constitutes the entire record of the retracement of a portion of the subdivisional lines and subdivision-of-section lines in section 31, Township 28 South, Range 8 West, Willamette Meridian, Oregon.

The history of the official surveys pertaining to this retracement is as follows:

In 1855, Dennis Hathorn, U.S. Deputy Surveyor, surveyed the south and west boundaries and a portion of the subdivisional lines, as shown on the official plat of survey approved July 7, 1856.

In 1959, William W. Glenn, Cadastral Surveyor, resurveyed a portion of the east boundary of T. 28 S., R. 9 W., as shown on the official plat of survey accepted May 24, 1960.

In 1964, John M. Jelley, Cadastral Surveyor, resurveyed a portion of the south boundary and subdivisional lines, and subdivided section 31, as shown on the official plat of survey accepted August 20, 1965.

The following surveys and corner restorations filed in the Douglas County Surveyor's Office are referred to in subsequent corner descriptions and are referenced by surveyor's last name, Professional Land Surveyor (PLS) No., and year.

Date	Name and Registration Number	File Number
1993	Bruce A. Shaner, PLS No. 430	M 112-78 CS 63/153
2005	Tony Hostetter, PLS No. 1975	CS 65/54-18

The directions of the lines are based on the true meridian as determined by Global Positioning Systems (GPS) techniques. All measurements along the lines were derived through the use of GPS and conventional survey techniques. Measured distances and directions have been adjusted by computer software that incorporates a least squares adjustment routine. The adjusted mean bearings and mean horizontal ground elevation distances are reported to the nearest second and 0.01 foot.

The lottings and areas are as shown on the plat approved July 7, 1856, and the plat accepted August 20, 1965.

The lines of the official original survey and resurveys were retraced and a search was made for all corners, lines, other calls of record, and where available, collateral evidence of local surveys and corners. Identified corners were perpetuated in their original positions. The retracement data were thoroughly verified and only the true line field data are given hereon.

Each new bearing tree has a 2 1/2 inch x 1/4 inch magnetic nail (Mag Nail) driven at the base on right side center, unless otherwise noted in the corner description.

The geographic positions shown hereon were determined by ties from GPS control points utilizing dual frequency, carrier phase GPS receivers, and processed using the National Geodetic Survey's Online Positioning User Service (OPUS).

The survey was executed in accordance with the specifications set forth in the Manual of Surveying Instructions (2009), and the special instructions approved April 28, 2010, for Group No. 2500, Administrative File Number 1303, Oregon, by George M. Winter, Cadastral Surveyor, beginning March 28, 2013, and completed May 7, 2013. He was assisted by Robert NMI Durning, and Marc A. Montpas, Surveying Technicians.

UNITED STATES DEPARTMENT OF THE INTERIOR
BUREAU OF LAND MANAGEMENT

Portland, Oregon

The survey represented by this plat, having been correctly executed in accordance with the requirements of law and the regulations of this Bureau, is hereby accepted.

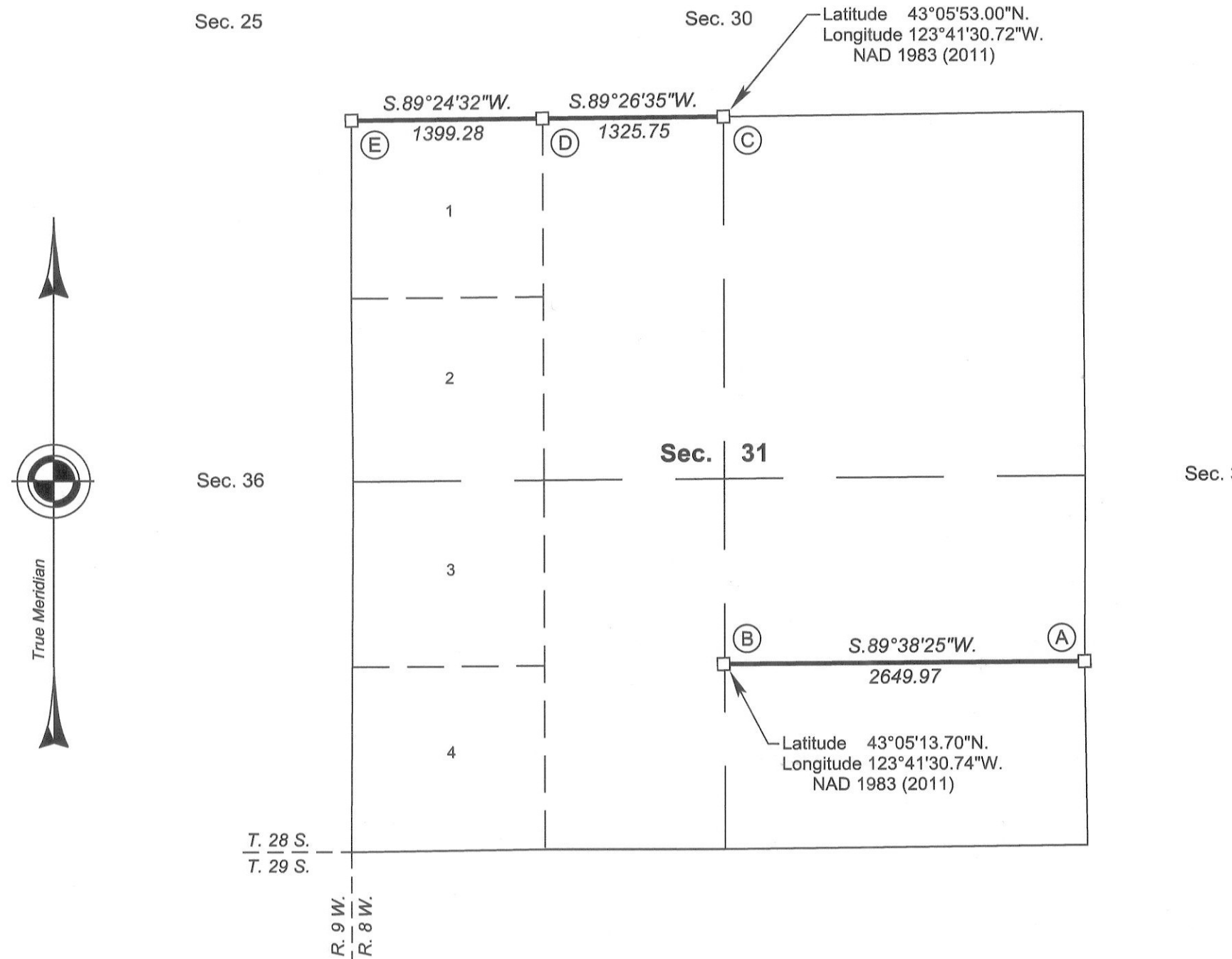
For the Director

Chief Cadastral Surveyor of Oregon

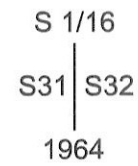
June 4, 2014

Date

RETRACEMENT



(A) The S 1/16 sec. cor. of secs. 31 and 32, monumented with an iron post, 2 1/2 ins. diam., firmly set, projecting 7 ins. above ground, with brass cap mkd.



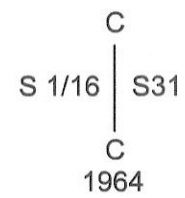
from which bearing trees mkd. by persons unknown

A fir, 15 ins. diam., bears N. 27 1/2° E., 38.0 ft. dist., with scribe marks S 1/16 S32 BT visible on an open blaze.

A fir, 7 ins. diam., bears N. 9 1/4° W., 11.1 ft. dist., with scribe marks S 1/16 S31 BT visible on an open blaze.

Corner is located alongside the southeast side of a wood fence post, 6 ins. diam., with fences extending N. and W.

(B) The center S 1/16 sec. cor. of sec. 31, monumented with an iron post, 2 1/2 ins. diam., firmly set, projecting 12 ins. above ground, with brass cap mkd.



from which the remains of a bearing tree mkd. by Jelley in 1964

A fir snag, 24 ins. diam., bears N. 62° W., 37.0 ft. dist., with a healed blaze.

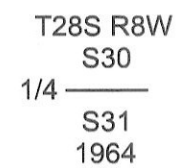
and new bearing trees

A fir, 13 ins. diam., bears S. 34 1/4° E., 12.9 ft. dist., mkd. CS 1/16 S31 BT

A fir, 7 ins. diam., bears N. 84 1/4° W., 7.9 ft. dist., mkd. CS 1/16 S31 BT

Corner is located alongside a wood fence post, with fences extending E. and W.

(C) The 1/4 sec. cor. of secs. 30 and 31, perpetuated by Shaner, PLS No. 430, in 1993, monumented with an iron post, 2 1/2 ins. diam., firmly set, projecting 4 ins. above ground, with brass cap mkd.



from which the remaining bearing tree mkd. by Jelley in 1964

A fir, 15 ins. diam., bears S. 8 1/2° W., 38.6 ft. dist., with a healed blaze.

and the remains of bearing trees mkd. by Shaner

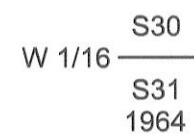
A fir stump, 20 ins. diam., bears N. 7 1/4° E., 63.2 ft. dist., with a healed blaze.

A fir, 11 ins. diam., bears S. 21 3/4° W., 6.4 ft. dist., with a healed blaze.

and a new bearing tree

A fir, 10 ins. diam., bears N. 50 1/2° W., 12.6 ft. dist., mkd. 1/4 S30 BT.

(D) The W 1/16 sec. cor. of secs. 30 and 31, monumented with an iron post, 2 1/2 ins. diam., firmly set, projecting 3 ins. above ground, with brass cap mkd.



from which the remains of bearing trees mkd. by Jelley in 1964

A fir stump, 32 ins. diam., bears N. 64° E., 53.8 ft. dist., with a healed blaze.

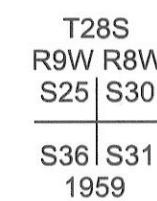
A fir, 17 ins. diam., bears S. 51 1/2° E., 34.0 ft. dist., with a healed blaze.

and a new bearing tree

A fir, 6 ins. diam., bears S. 23 1/2° W., 29.4 ft. dist., mkd. W1/16 S31 BT.

Corner is located in an old logging road, bears N. and S.

(E) The cor. of secs. 25, 30, 31, and 36, on the W. bdy. of the Tp., perpetuated by Hostetter, PLS No. 1975, in 2005, monumented with an iron post, 2 1/2 ins. diam., firmly set, projecting 3 ins. above ground, with brass cap mkd.



from which the remaining bearing trees mkd. by Glenn in 1959

A fir, 22 ins. diam., bears N. 22 1/4° E., 33.3 ft. dist., with a healed blaze. (Record, 34.0 ft. dist.)

A cedar, 21 ins. diam., bears N. 60° W., 34.6 ft. dist., with a healed blaze. (Record, N. 58 3/4° W., 35.3 ft. dist.)

and bearing trees mkd. by Hostetter

A fir, 18 ins. diam., bears S. 24 1/2° E., 27.6 ft. dist., with a healed blaze.

A cedar, 20 ins. diam., bears S. 60 1/4° W., 12.0 ft. dist., with fragmentary scribe marks visible on an open blaze.

LEGEND

□ Corner previously established or reestablished

I, George M. Winter, Cadastral Surveyor, HEREBY CERTIFY upon honor, that in pursuance of special instructions bearing the approval date of the 28th day of April, 2010, and the assignment instructions bearing the date of the 28th day of March, 2013, I have retraced a portion of the subdivisional lines and subdivision-of-section lines in section 31, Township 28 South, Range 8 West, Willamette Meridian, Oregon, which is represented upon this plat as having been executed by me and under my direction; and that said survey has been made in strict conformity with said special instructions, the Manual of Surveying Instructions, and in the specific manner described on this plat.

Cadastral Surveyor

6/2/2014
Date



OFFICIALLY FILED: 6/25/2014