

TOWNSHIP 28 SOUTH, RANGE 8 WEST, OF THE WILLAMETTE MERIDIAN, OREGON

DOUGLAS COUNTY
SURVEYOR

RETRACEMENT

This plat represents the entire survey record of the retracement of a portion of the subdivisional lines, T. 28 S., R. 8 W., Willamette Meridian, Oregon.

The history of surveys pertaining to this retracement is as follows:

In 1855, Dennis Hathorn, U.S. Deputy Surveyor, surveyed a portion of the subdivisional lines.

In 1875, Winfield S. Chapman, U.S. Deputy Surveyor, surveyed a portion of the subdivisional lines.

In 1969-73, Lynn M. Roseberry, Daniel L. Berry, Gordon S. Popken and Albert J. Garrison, Cadastral Surveyors, resurveyed a portion of the subdivisional lines and subdivided section 10.

In 1975, James E. Jelley, Cadastral Surveyor, resurveyed a portion of the subdivisional lines.

The survey was executed in accordance with the specification set forth in the Manual of Surveying Instructions, 1973. The retracement data were thoroughly verified and only the true line data is given hereon. Only those lines bounding or crossing public lands were blazed. The directions of the lines were determined by direct solar observations, carried forward by sustained angulation, and refer to the true meridian.

An analysis of the unadjusted field data assured a closure not exceeding 1:4000 in error. The measured distance and direction have been adjusted by computer software that incorporates a least squares adjustment routine. The adjusted bearing and distance are reported to the nearest second and 0.01 foot.

The geodetic position shown hereon was determined by differentially corrected carrier phase GPS receivers relative to the National Spatial Reference System.

Each new bearing tree has a 2 1/2 inch x 1/4 inch magnetic nail (Mag Nail) driven at the base on right side center.

Except as shown hereon, corner descriptions are as reported by Jelley in 1975.

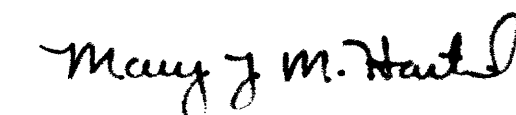
This retracement was executed by A. Bert Skeesick, Cadastral Surveyor, beginning June 26, 2006 and completed June 28, 2006; pursuant to Assignment Instructions dated June 28, 2006, under Special Instructions for Group Number 2000, Oregon, dated and approved February 22, 2002; and Assignment Instructions dated June 7, 2006, under Special Instructions for Group Number 2100, Oregon, dated and approved March 8, 2004; and Instructions to Cancel Group 2100 and Reassign to Group 2300, dated October 12, 2007, under Group Number 2300, Oregon, Administrative File Number 0604, dated March 16, 2007, approved March 21, 2007. He was assisted by Dameon P. Barrows and Robert Durning, Surveying Technicians.

UNITED STATES DEPARTMENT OF THE INTERIOR
BUREAU OF LAND MANAGEMENT

Portland, Oregon

The retracement represented by this plat, having been correctly executed in accordance with the requirements of law and the regulations of this Bureau, is hereby accepted.

For the Director



Chief Cadastral Surveyor of Oregon

March 17, 2011

Date

Ⓐ The cor. of secs. 21, 22, 27 and 28, remonumented by Roseberry, et al, in 1969-73, monumented with an iron post, 2 1/2 ins. diam., firmly set, projecting 4 ins. above ground, with brass cap mkd.

T28S	R8W
S21	S22
S28	S27
1973	

from which the remains of the original bearing trees

A sawed fir stump, 53 ins. diam., bears N. 22 3/4° E., 53.5 ft. dist., with a healed blaze. (Record N. 20° E., 52.1 ft.)

A madrone, 23 ins. diam., bears N. 75° W., 27.0 ft. dist., with a healed blaze. (Record 29.7 ft.)

and remains of bearing trees mkd. by Roseberry, et al

A dead fir snag, 11 ins. diam., bears N. 31° E., 68.1 ft. dist., with fragmentary scribe marks visible on a partially healed blaze. (Record N. 30° E., 66.0 ft.)

A cedar, 29 ins. diam., bears S. 48 1/2° W., 46.9 ft. dist., with a healed blaze.

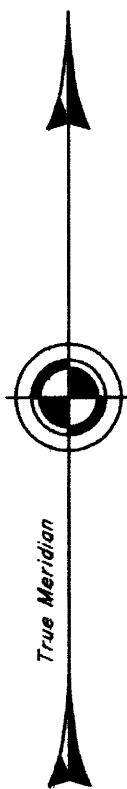
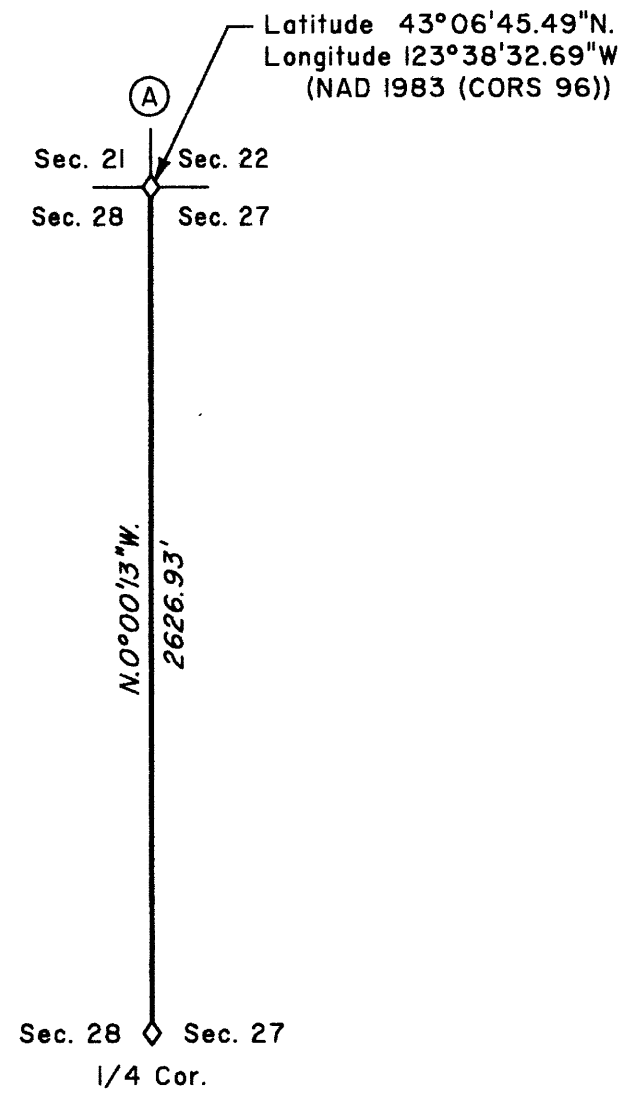
and bearing trees not of record

A cedar, 16 ins. diam., bears S. 24 3/4° W., 6.7 ft. dist., with a healed double blaze.


and new bearing trees

A fir, 7 ins. diam., bears N. 37° E., 15.0 ft. dist., mkd. T28S R8W S22 BT.

A fir, 13 ins. diam., bears S. 29 1/2° E., 22.8 ft. dist., mkd. T28SR8W S27 BT.



I, A. Bert Skeesick, Cadastral Surveyor, HEREBY CERTIFY upon honor, that in pursuance of Special Instructions bearing dates of the 22nd day of February, 2002, the 8th day of March, 2004, and the 16th day of March, 2007, I have retraced a portion of the subdivisional lines, Township 28 South, Range 8 West, Willamette Meridian, Oregon. Said retracement has been executed in strict conformity with said Special Instructions, the Manual of Instructions for the Survey of the Public Lands of the United States, 1973, and in specific manner described on this plat.


Cadastral Surveyor

02.22.2011
Date

LEGEND
◇ Original corner previously remonumented



OFFICIALLY FILED: 5/14/2011