

FILED
 Date: 5/17/2011 By: JC
 This survey consists of:
 Map: T28S R8W 2011-1
 Narrative: VOL 56
 Corner Rpt: PGS 22272-73

TOWNSHIP 28 SOUTH, RANGE 8 WEST, OF THE WILLAMETTE MERIDIAN, OREGON

SHEET 1 OF 2

RETRACEMENT

This plat represents the entire record of the retracement of a portion of the subdivisional lines and subdivision-of-section lines of section 21, T. 28 S., R. 8 W., Willamette Meridian, Oregon.

A history of surveys pertaining to this retracement is as follows on Sheet 2 of 2.

The direction of the lines are based on the true meridian as determined by a combination of direct solar observations and Global Positioning System (GPS) measurements.

The retracement data were thoroughly verified and only the true line data are given hereon. Only those lines bounding or crossing public lands were blazed.

An analysis of the unadjusted field data assured a closure not exceeding 1:4000 in error. Measured distances and directions have been adjusted by computer software that incorporates a least squares adjustment routine. The adjusted bearings and distances are reported to the nearest second and 0.01 foot.

The lottings and areas are as shown on the plat approved July 7, 1856, December 17, 1875, and January 10, 1876.

The geodetic positions shown hereon for the corner of sections 15, 16, 21, and 22, and the W 1/16 section corner of sections 21 and 28 were determined by a tie from a temporary control point established utilizing dual frequency, carrier phase GPS receivers relative to the National Spatial Reference System.

Each new bearing tree has a 2 1/2 inch x 1/4 inch magnetic nail (Mag Nail) driven at the base on right side center, unless otherwise noted in the corner description.

This survey was executed by Kenneth W. Saveland, Cadastral Surveyor, beginning September 9, 2009, and completed October 6, 2009, in accordance with the specification set forth in the Manual of Surveying Instructions, 1973; pursuant to Special Instructions dated March 16, 2007, approved March 21, 2007, which provided for the survey included under Group Number 2300, Administrative File Number 0905, and Assignment Instructions dated September 2, 2009. He was assisted by Robert NMI Durning, Joel R. Herzberg, and Thomas A. Hollamon, Surveying Technicians.

DOUGLAS COUNTY SURVEYOR

Sec. 17

Sec. 16

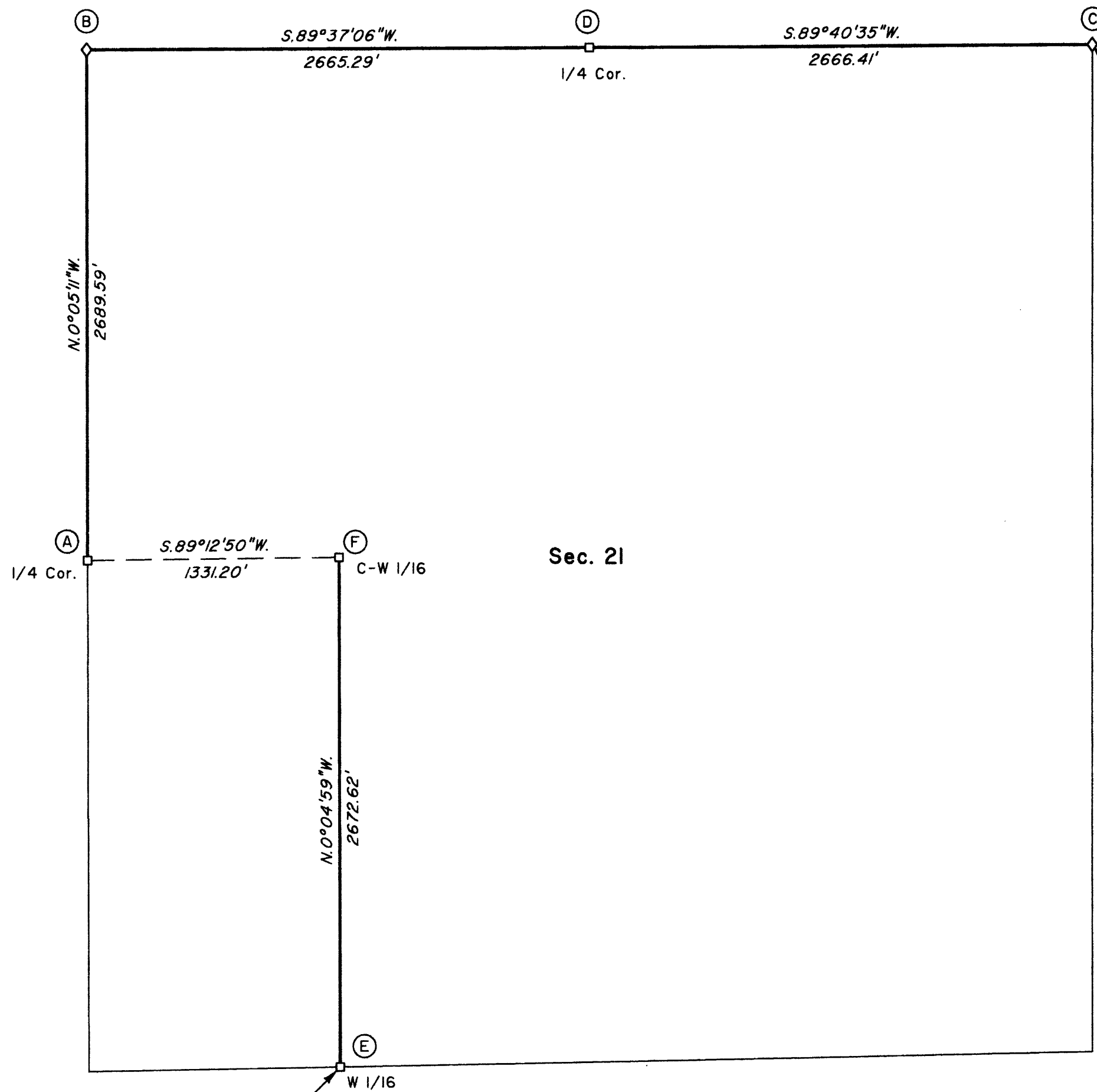
Sec. 15

Sec. 20

Sec. 21

Sec. 22

Sec. 28



Latitude 43°07'37.79"N.
 Longitude 123°38'32.61"W.
 (NAD 1983 (CORS))

Latitude 43°06'44.69"N.
 Longitude 123°39'26.45"W.
 (NAD 1983 (CORS))

LEGEND

- ◊ Original corner previously remonumented
- Corner previously established or reestablished

UNITED STATES DEPARTMENT OF THE INTERIOR
 BUREAU OF LAND MANAGEMENT

Portland, Oregon

The retracement represented by this plat, having been correctly executed in accordance with the requirements of law and the regulations of this Bureau, is hereby accepted.

For the Director

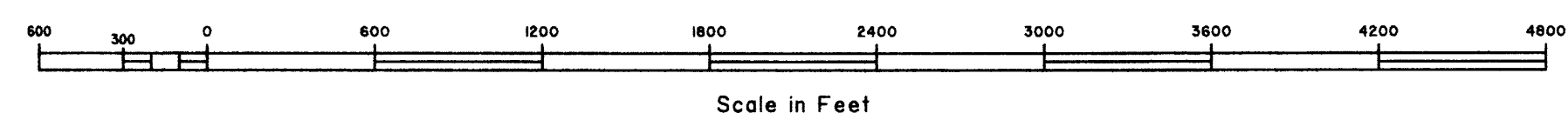
John P. Rasmussen, Acting
 Chief Cadastral Surveyor of Oregon

March 2, 2011
 Date

I, Kenneth W. Saveland, Cadastral Surveyor, HEREBY CERTIFY upon honor, that in pursuance of Special Instructions bearing date of the 16th day of March, 2007, I have retraced a portion of the subdivisional lines and subdivision-of-section lines of section 21, Township 28 South, Range 8 West, Willamette Meridian, Oregon, which is represented upon this plat as having been executed by me and under my direction. Said retracement has been made in strict conformity with said Special Instructions, the Manual of Instructions for the Survey of the Public Lands of the United States, 1973, and in specific manner described upon this plat.

Kenneth W. Saveland
 Cadastral Surveyor

FEBRUARY 22, 2011
 Date



OFFICIALLY FILED: 5/14/2011

FILED
 Date: 5/17/2011 by: JC
 This survey consists of:
 Map: T28S R8W 2011-1
 Narrative: VOL 56
 Corner Rpt: PGS 22272-73
 DOUGLAS COUNTY
 SURVEYOR

TOWNSHIP 28 SOUTH, RANGE 8 WEST, OF THE WILLAMETTE MERIDIAN, OREGON

SHEET 2 OF 2

RETRACEMENT

(A) The 1/4 sec. cor. of secs. 20 and 21, established by Chapman in 1875, reestablished by Jelley in 1975, perpetuated by Troy J. Rambo, Professional Land Surveyor No. 2865, in 2002, filed in the Douglas County Surveyor's Office, Map File No. M141-II, monumented with an iron post, 2 1/2 ins. diam., firmly set, projecting 2 ins. above ground, with brass cap mkd.

T 28 S R 8 W
 1/4
 S 20 | S 21
 1975

from which bearing trees mkd. by Jelley, reported by Jelley and Rogers

A fir, 11 ins. diam., bears N. 86° E., 9.6 ft. dist., with a healed blaze.

A fir, 20 ins. diam., bears S. 89 1/2° W., 17.2 ft. dist., with a healed blaze.

and bearing trees mkd. by Troy J. Rambo, Professional Land Surveyor No. 2865

A fir, 18 ins. diam., bears S. 26 3/4° E., 14.2 ft. dist. to spike at right side base, with a healed blaze.

A fir, 18 ins. diam., bears S. 38 1/4° W., 28.5 ft. dist. to spike at right side base, with a healed blaze.

(B) The cor. of secs. 16, 17, 20, and 21, established by Chapman in 1875, perpetuated by James W. Byron, Deputy County Surveyor in 1957, filed in the Douglas County Surveyor's Office, C.S. File No. 49/12, monumented with an iron post, 1 1/4 ins. diam., firmly set, projecting 19 ins. above ground, with brass cap mkd.

COUNTY SURVEYORS
 T. 28 S. R. 8 W.
 17 | 16
 20 | 21
 1957
 OFFICE

from which the remains of the orig. bearing trees

A sawed fir stump, 50 ins. diam., bears S. 66° W., 30.4 ft. dist., with a healed blaze.

A sawed, decayed fir stump, size indeterminate, bears N. 43 1/2° W., 27.1 ft. dist., with a healed blaze.

and the remains of bearing trees mkd. by James W. Byron, Deputy County Surveyor, reported by Jelley

A sawed cedar stump, 38 ins. diam., bears N. 35° E., 38.9 ft. dist., with a healed blaze.

A decayed fir stump, size indeterminate, bears S. 45° E., 11.2 ft. dist., with no marks visible.

and bearing trees mkd. by Roseberry, Berry, Popken, and Garrison, reported by Jelley

A fir, 23 ins. diam., bears S. 73° E., 15.8 ft. dist., with a healed blaze.

A fir, 29 ins. diam., bears N. 53 1/2° W., 40.3 ft. dist., with a healed blaze.

and new accessories

A fir, 6 ins. diam., bears N. 30 1/2° E., 25.0 ft. dist., mkd. T28S R8W S16 BT.

A rebar, 30 ins. long, 5/8 in. diam., driven 28 ins. in the ground for a reference monument, bears S. 47° 31' 27" W., 19.38 ft. dist., with an aluminum cap mkd. RM T28S R8W S20 19.4 FT TO COR 2009 and an arrow pointing to the corner.

(C) The cor. of secs. 15, 16, 21, and 22, established by Hathorn in 1856, perpetuated from original evidence no longer in existence by James W. Byron, Deputy County Surveyor in 1957, filed in the Douglas County Surveyor's Office, C.S. File No. 49/5, monumented with an iron post, 1 1/4 ins. diam., firmly set, projecting 7 ins. above ground, with brass cap mkd.

COUNTY SURVEYORS
 T 28 S R 8 W
 16 | 15
 21 | 22
 1957
 OFFICE

from which the remains of bearing trees mkd. by James W. Byron, Deputy County Surveyor, reported by Peterson

A fir, 32 ins. diam., bears N. 73° E., 57.8 ft. dist., with a healed blaze.

A roothole bears S. 3 3/4° E., 39.6 ft. dist., downhill of which is a hemlock snag, size indeterminate, with no marks visible on a hollowed blaze.

A sawed fir stump, 28 ins. diam., bears S. 45° W., 40.9 ft. dist., with no marks visible and a metal cover.

and remaining bearing trees mkd. by Peterson

A fir, 10 ins. diam., bears S. 57° W., 13.5 ft. dist., with a healed double blaze.

A fir, 13 ins. diam., bears N. 69 1/2° W., 19.8 ft. dist., with a healed blaze.

and a new bearing tree

A fir, 10 ins. diam., bears S. 7 1/2° E., 19.7 ft. dist., mkd. T28S R8W S22 BT.

(D) The 1/4 sec. cor. of secs. 16 and 21, established by Chapman in 1875, reestablished by Jelley in 1975, monumented with an iron post, 2 1/2 ins. diam., firmly set, projecting 6 ins. above ground, with brass cap mkd.

T 28 S R 8 W
 S 16
 1/4
 S 21
 1975

from which the remains of bearing trees mkd. by Jelley

A sawed, burnt, decayed fir stump, 19 ins. diam., bears S. 62° W., 20.8 ft. dist., with a healed blaze and a metal cover.

A decayed fir stump, size indeterminate, bears N. 82° W., 30.0 ft. dist., with fragmentary scribe marks visible on loose fragment.

and new bearing trees

A fir, 7 ins. diam., bears S. 79 1/4° W., 23.5 ft. dist., mkd. 1/4 S21 BT.

A fir, 5 ins. diam., bears N. 2 1/2° W., 10.9 ft. dist., mkd. 1/4 S16 BT.

(E) The W 1/16 sec. cor. of secs. 21 and 28, established by Roseberry, Berry, Popken, and Garrison in 1973, perpetuated by Mark F. Smalley, Professional Land Surveyor No. 2354, in 2009, filed in the Douglas County Surveyor's Office, C.S. File No. 65/66-29, monumented with an iron post, 2 1/2 ins. diam., firmly set, projecting 8 ins. above ground, with brass cap mkd.

W 1/16 S 21
 S 28
 1973

from which bearing trees mkd. by Roseberry, Berry, Popken, and Garrison, reported by Jelley and Rogers

A fir, 14 ins. diam., bears S. 22° E., 12.5 ft. dist., with a healed blaze.

A fir, 34 ins. diam., bears N. 68° W., 64.7 ft. dist., with a healed blaze.

and a bearing tree mkd. by Mark F. Smalley, Professional Land Surveyor No. 2354

A fir, 17 ins. diam., bears N. 78° E., 25.8 ft. dist., with scribe marks W 1/16 BT visible on an open blaze.

(F) The center W 1/16 sec. cor. of sec. 21, established by Jelley and Rogers in 1980, monumented with an iron post, 2 1/2 ins. diam., firmly set, projecting 4 ins. above ground, with brass cap mkd.

W 1/16 C
 S 21
 1980

from which the remains of bearing trees mkd. by Jelley and Rogers

A fir snag, 6 ins. diam., bears N. 23° E., 10.2 ft. dist., with a healed double blaze.

A fir, 19 ins. diam., bears S. 9 1/2° E., 38.3 ft. dist., with a healed blaze.

and a new bearing tree

A fir, 10 ins. diam., bears N. 81° E., 9.0 ft. dist., mkd. X BT.

A history of surveys pertaining to this retracement is as follows:

In 1856, Dennis Hathorn, U.S. Deputy Surveyor, surveyed a portion of the subdivisional lines.

In 1875, Winfield S. Chapman, U.S. Deputy Surveyor, surveyed a portion of the subdivisional lines.

In 1969-73, Lynn M. Roseberry, Daniel L. Berry, Gurdon S. Popken, and Albert J. Garrison, Cadastral Surveyors, resurveyed a portion of the subdivisional lines and subdivided section 10.

In 1975, James E. Jelley, Cadastral Surveyor, resurveyed a portion of the subdivisional lines.

In 1980-84, James E. Jelley and Wayne L. Rogers, Cadastral Surveyors, resurveyed a portion of the subdivisional lines and Donation Land Claim No. 40, and subdivided sections 21 and 23.

In 1987, Boyd W. Peterson, Cadastral Surveyor, resurveyed a portion of the subdivisional lines and the boundary of Donation Land Claim No. 41, and subdivided section 15.

UNITED STATES DEPARTMENT OF THE INTERIOR
 BUREAU OF LAND MANAGEMENT

Portland, Oregon

The retracement represented by this plat, having been correctly executed in accordance with the requirements of law and the regulations of this Bureau, is hereby accepted.

For the Director

John P. Rasmussen, Acting

Chief Cadastral Surveyor of Oregon

March 2, 2011

Date

OFFICIALLY FILED: 5/14/2011