

# TOWNSHIP 28 SOUTH, RANGE 8 WEST, OF THE WILLAMETTE MERIDIAN, OREGON

## RETRACEMENT AND REHABILITATION

This plat represents the entire survey record of the retracement of a portion of the subdivisional lines, and rehabilitation of certain corner points in T. 28 S., R. 8 W., Willamette Meridian, Oregon.

The history of surveys pertaining to this retracement and rehabilitation is as follows:

In 1855, Dennis Hathorn, U.S. Deputy Surveyor, surveyed the West boundary.

In 1875, W. S. Chapman, U.S. Deputy Surveyor, surveyed a portion of the subdivisional lines.

In 1969-73, Lynn M. Roseberry, Daniel L. Berry, Gordon S. Popken, and Albert K. Garrison, Cadastral Surveyors, resurveyed a portion of the subdivisional lines.

The retracement and rehabilitation were executed by A. Bert Skeesick, Cadastral Surveyor, and Robert H. Browning, Surveying Technician, beginning September 13, 2004, and completed September 29, 2004, pursuant to Special Instructions for Group 2000, dated February 22, 2002; Group 2100, dated March 8, 2004; and Group 2300, dated March 16, 2007; under Assignment Instructions dated September 13, 2004 and August 9, 2004, and Group 2100 re-Assignment dated March 16, 2007. They were assisted by Robert NMI Durning and Thomas A. Hollamon, Surveying Technicians, James C. Gates, Forestry Technician, and Robert L. Kinney, Laborer.

The retracement data were thoroughly verified and only the true line data is given hereon.

The direction of the line is based on the true meridian as determined by direct solar observations.

The retracement was performed utilizing both conventional (directly measured angles and distances) and NAVSTAR Global Positioning System (GPS) satellite techniques. The GPS measurements utilized dual frequency, carrier phase GPS receivers. The baselines were computed in and adjusted by computer software utilizing a least squares analysis. An analysis of the unadjusted conventional field data assured a closure not exceeding 1:4000 in error. Conventionally measured distances and directions have been adjusted by computer software that incorporates a least squares adjustment routine. The adjusted bearings and distances are reported to the nearest second and 0.01 foot.

Except as noted hereon, the corner descriptions are as reported by Roseberry, et al, in 1969-73.

All new bearing trees have a 2 1/2 inch x 1/4 inch nail driven at the base on right side center.

The geodetic position shown hereon was determined by a tie utilizing dual frequency carrier phase GPS receivers relative to the National Spatial Reference System

(A) The 1/4 sec. cor. of secs 17 and 18, monumented with an iron pipe, 1-1/4 ins. diam., firmly set, projecting 15 ins. above the ground, with brass cap mkd. as reported by Roseberry, et al, in 1969-73; from which the remains of the original bearing trees

A fir, 70 ins. diam., bears S. 60° E., 4.0 ft. dist., with no marks visible on opened blaze

A sawed fir stump, 77 ins. diam., bears S. 35° W., 7.3 ft. dist., with no marks visible on opened blaze.

and the remains of bearing trees reported by Roseberry, et al

A hemlock, 26 ins. diam., bears N. 27° E., 42.9 ft. dist., with a healed blaze.

A sawed and decayed hemlock stump, 19 ins. diam., bears N. 36° W., 25.1 ft. dist., with no marks visible.

and a new bearing tree

A fir, 9 ins. diam., bears N. 87° W., 6.1 ft. dist., mkd. 1/4 S18 BT.

(B) The cor. of secs 17, 18, 19, and 20, monumented with an iron post, 2-1/2 ins. diam., firmly set, projecting 18 ins. above the ground, with brass cap mkd. as reported by Roseberry, et al, in 1969-73; from which the remains of bearing trees mkd. by Roseberry, et al

A fir, 27 ins. diam., bears N. 82° E., 47.5 ft. dist., with a healed blaze

A sawed hemlock stump, 25 ins. diam., bears S. 5° E., 24.4 ft. dist., with scribe marks BS R8W S20 BT visible on a partially healed blaze.

A cedar, 28 ins. diam., bears S. 72 1/2° W., 35.0 ft. dist., with a healed blaze. (Record S. 84° W.)

A hemlock, 20 ins. diam., bears N. 42° W., 24.4 ft. dist., with a healed blaze.

and new bearing trees

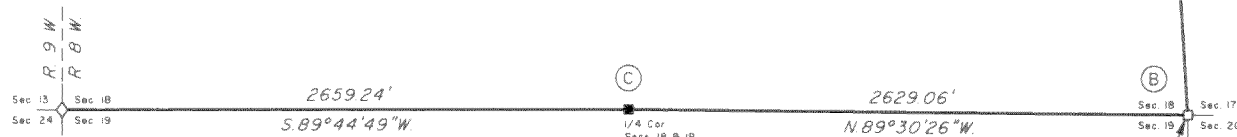
A cedar, 4 ins. diam., bears S. 35 1/4° E., 14.2 ft. dist., mkd. X BT

A hemlock, 8 ins. diam., bears S. 68 1/2° W., 41.4 ft. dist., mkd. T28S R8W S19 BT.

(C) The 1/4 sec. cor. of secs 18 and 19, monumented with an iron post, 2-1/2 ins. diam., firmly set, projecting 3 ins. above the ground, with brass cap mkd. as reported by Roseberry, et al, in 1969-73; from which new bearing trees

A fir, 5 ins. diam., bears S. 49 3/4° W., 37.3 ft. dist., mkd. 1/4 S19 BT.

A hemlock, 6 ins. diam., bears N. 13 1/4° W., 196 ft. dist., mkd. 1/4 S18 BT



Latitude 43°07'37.59"N  
 Longitude 123°40'56.14"W  
 (NAD 1983 (CORSS))

We, A. Bert Skeesick, Cadastral Surveyor, and Robert H. Browning, Surveying Technician, HEREBY CERTIFY upon honor that in pursuance of Special Instructions bearing the date of the 22nd day of February, 2002, the 8th day of March 2004, and the 16th day of March, 2007, we have retraced a portion of the subdivisional lines, and rehabilitated certain corner points in Township 28 South, Range 8 West, Willamette Meridian, Oregon. Said retracement and rehabilitation has been executed in strict conformity with said Special Instructions, the Manual of Instructions for the Survey of the Public Lands of the United States, and in specific manner described on this plat

*[Signature]*  
 Cadastral Surveyor  
*[Signature]*  
 Surveying Technician

10/06/2008  
 Date  
 10/06/2008  
 Date

**LEGEND**

- ◊ Original corner previously remonumented
- Corner previously established or reestablished
- Corner previously established or reestablished; remonumented this survey

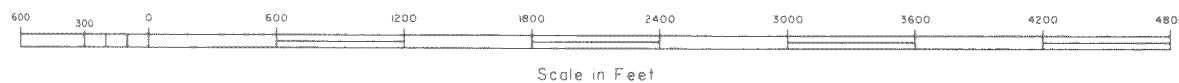
UNITED STATES DEPARTMENT OF THE INTERIOR  
 BUREAU OF LAND MANAGEMENT

Portland, Oregon

The retracement and rehabilitation represented by this plat, having been correctly executed in accordance with the requirements of law and the regulations of this Bureau, is hereby accepted.

For the Director

*[Signature]*  
 Chief Cadastral Surveyor of Oregon



10/16/2008  
 Date