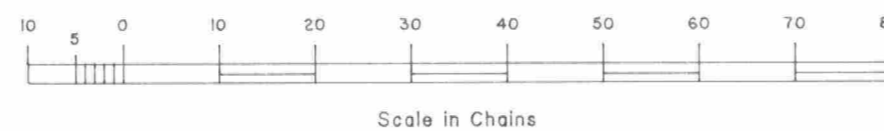
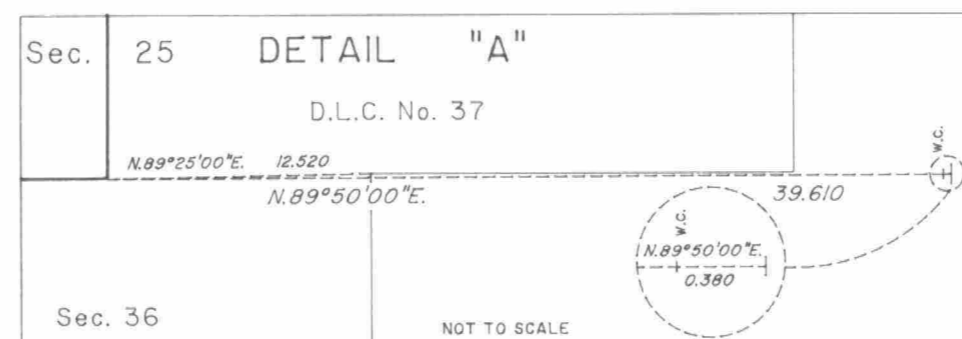
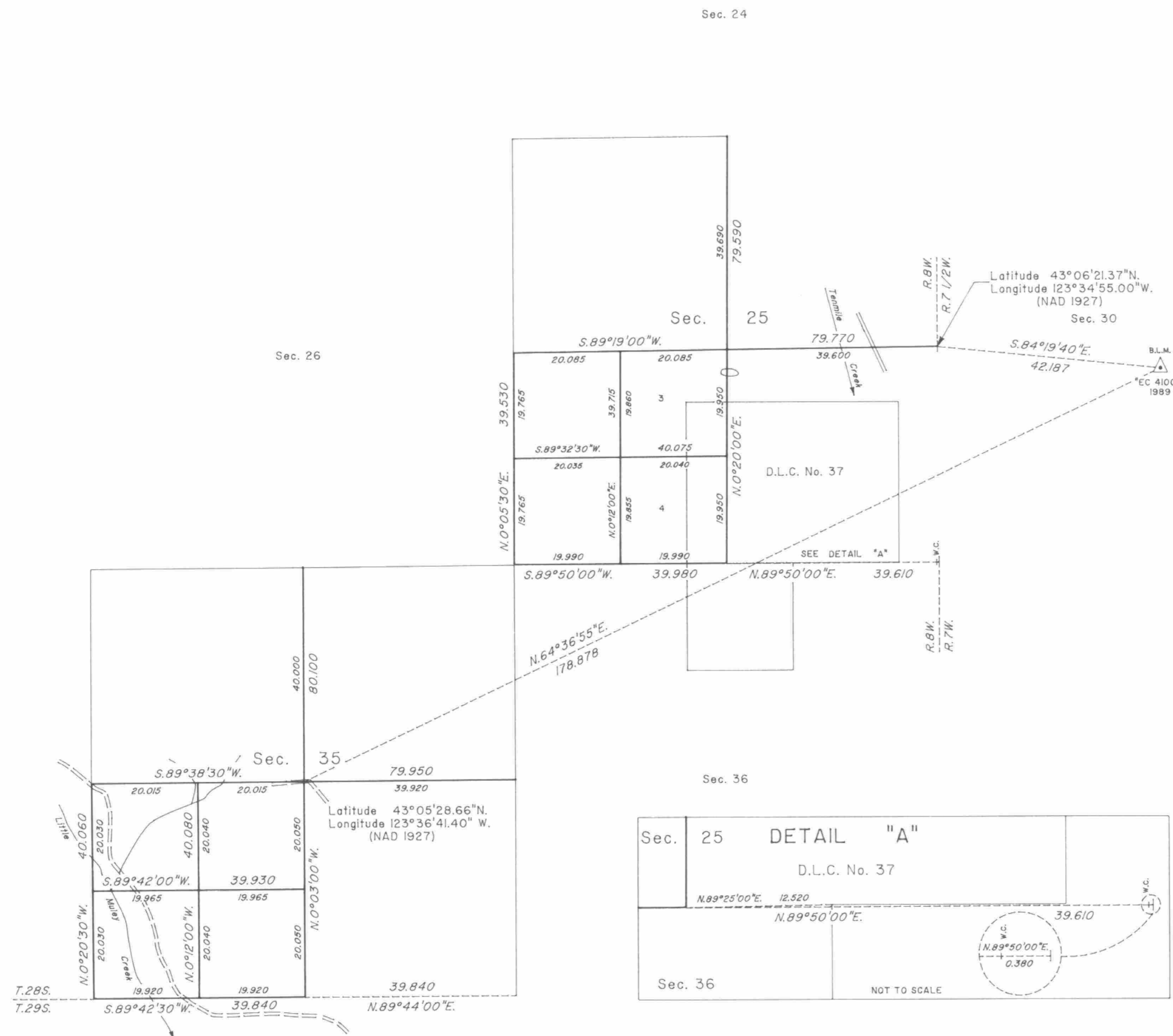
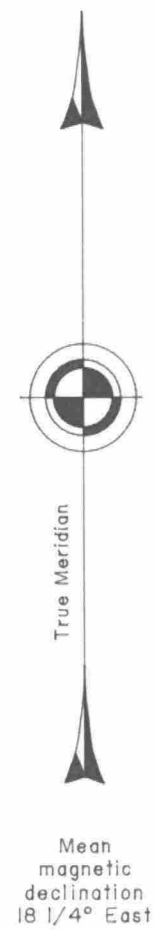


TOWNSHIP 28 SOUTH, RANGE 8 WEST, OF THE WILLAMETTE MERIDIAN, OREGON

DEPENDENT RESURVEY AND SUBDIVISION OF SECTIONS



A history of surveys is contained in the field notes.

This plat represents a dependent resurvey of a portion of the south boundary and subdivisional lines, T. 28 S., R. 8 W., Willamette Meridian, Oregon, designed to restore the corners in their true original locations according to the best available evidence, and the subdivision of sections 25 and 35.

The lottings and areas are as shown on the plats approved July 7, 1856 and January 16, 1862.

The survey was executed by Wayne L. Rogers, Cadastral Surveyor, beginning May 10, 1989, and completed July 27, 1989, pursuant to Special Instructions dated March 10, 1989, under Group Number 1483, Oregon.

Timber in this area consists of fir, cedar, spruce, yew, pine, alder, cherry, maple, oak, madrone, willow, ash and chinquapin.

UNITED STATES DEPARTMENT OF THE INTERIOR
BUREAU OF LAND MANAGEMENT

Portland, Oregon September 30, 1992

This plat is strictly conformable to the approved field notes, and the survey, having been correctly executed in accordance with the requirements of law and the regulations of this Bureau, is hereby accepted.

For the Director

Chief Cadastral Surveyor of Oregon