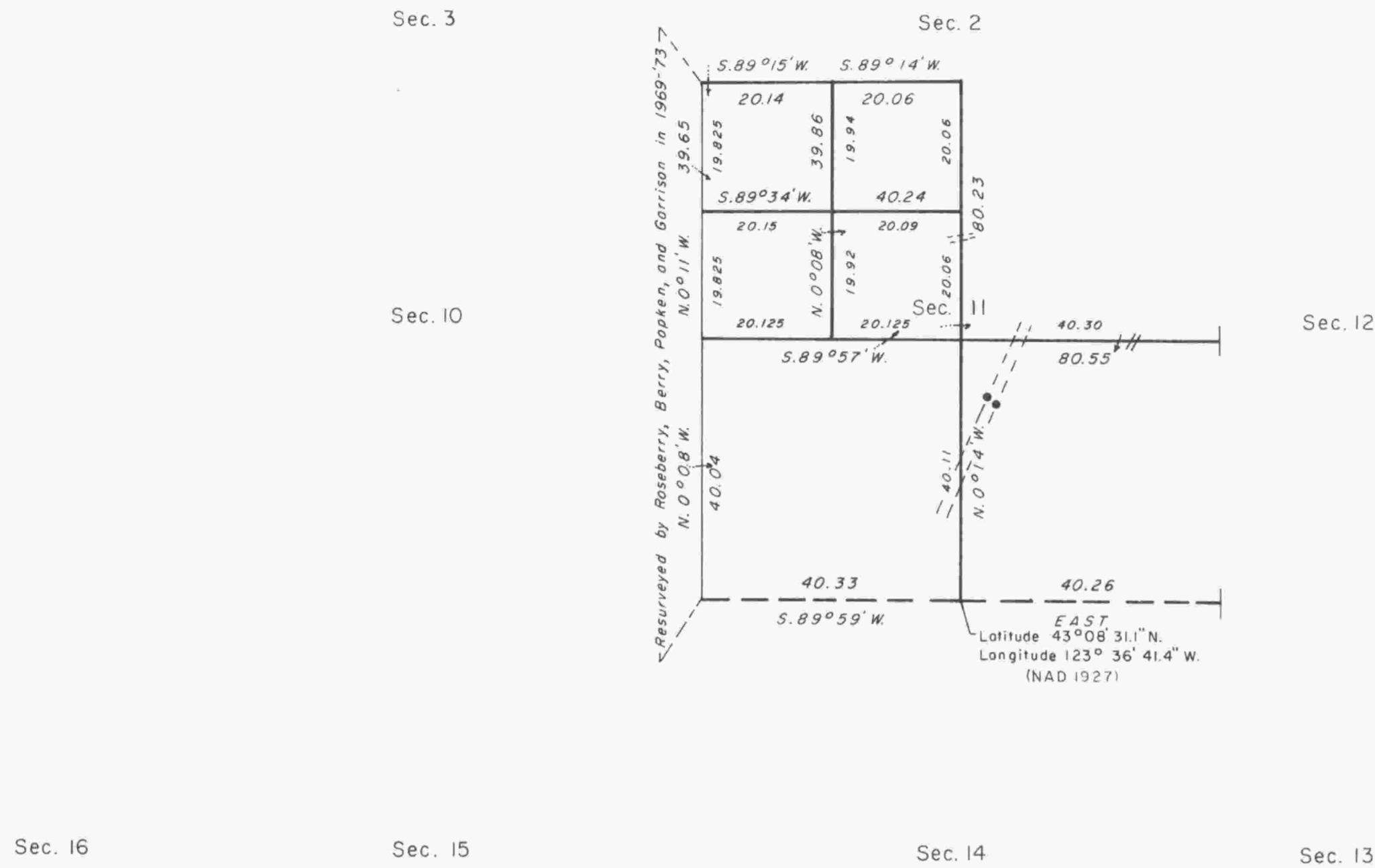


TOWNSHIP 28 SOUTH, RANGE 8 WEST, OF THE WILLAMETTE MERIDIAN, OREGON

DEPENDENT RESURVEY AND SUBDIVISION OF SECTIONS



Mean magnetic declination
20° EAST



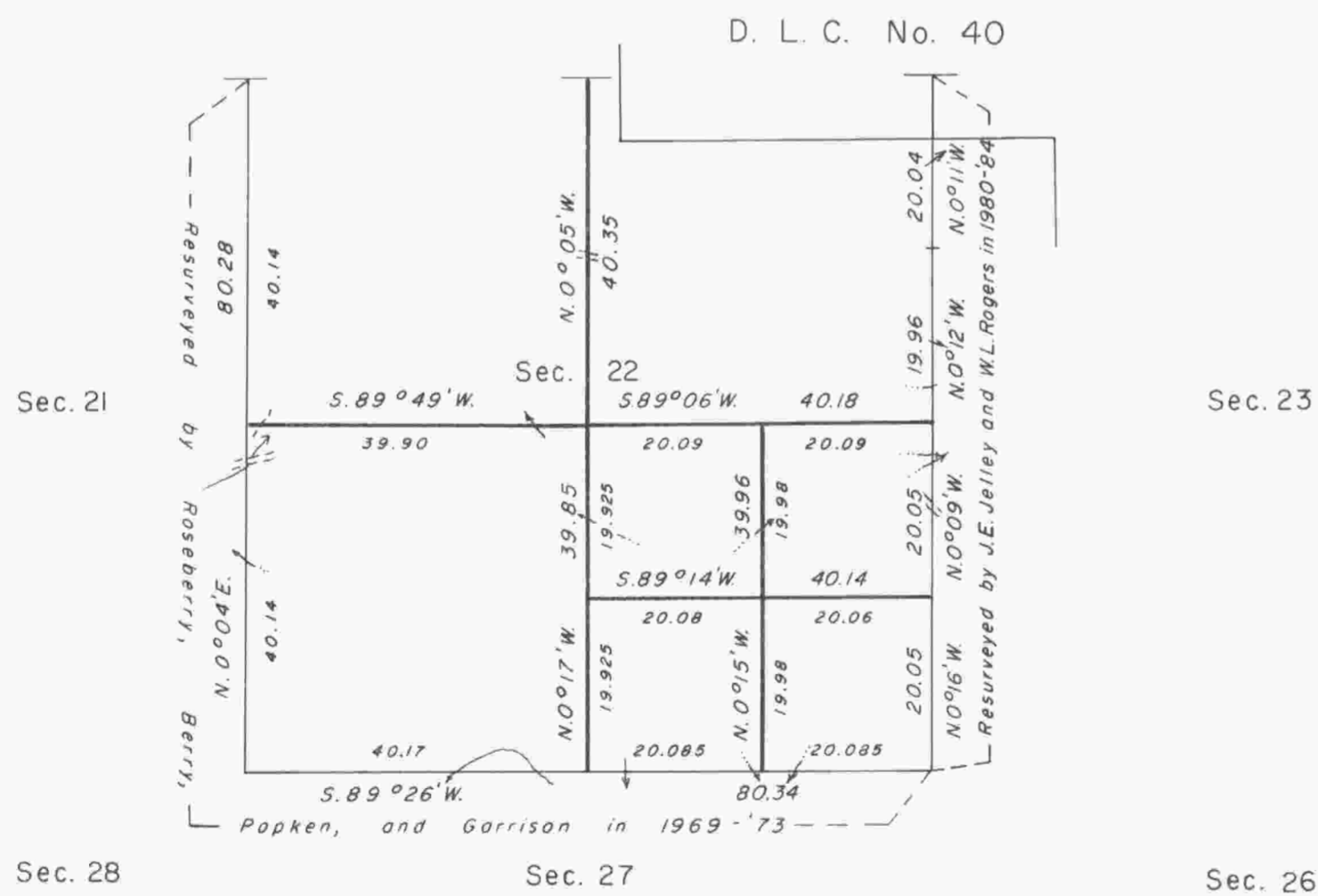
The history of surveys is contained in the field notes.

This plat represents a dependent resurvey of a portion of the subdivisional lines, T. 28 S., R. 8 W., Willamette Meridian, Oregon, designed to restore the corners in their true original locations according to the best available evidence, and the subdivision of sections 11 and 22.

The lottings and areas are as shown on the plat approved July 7, 1856.

The survey was executed by Dale T. Bedell, Cadastral Surveyor, beginning July 23, 1985, and completed October 10, 1985, pursuant to Special Instructions dated June 13, 1985, under Group Number 1278, Oregon.

Timber in this area consists of fir, hemlock, cedar, pine, yew, maple, chinquapin, oak, walnut, ash, madrone, myrtle, alder, and cottonwood.



UNITED STATES DEPARTMENT OF THE INTERIOR
BUREAU OF LAND MANAGEMENT
Portland, Oregon July 22, 1988

This plat is strictly conformable to the approved field notes, and the survey, having been correctly executed in accordance with the requirements of law and the regulations of this Bureau, is hereby accepted.

For the Director

Wayne M. Gardner
Chief Cadastral Surveyor of Oregon