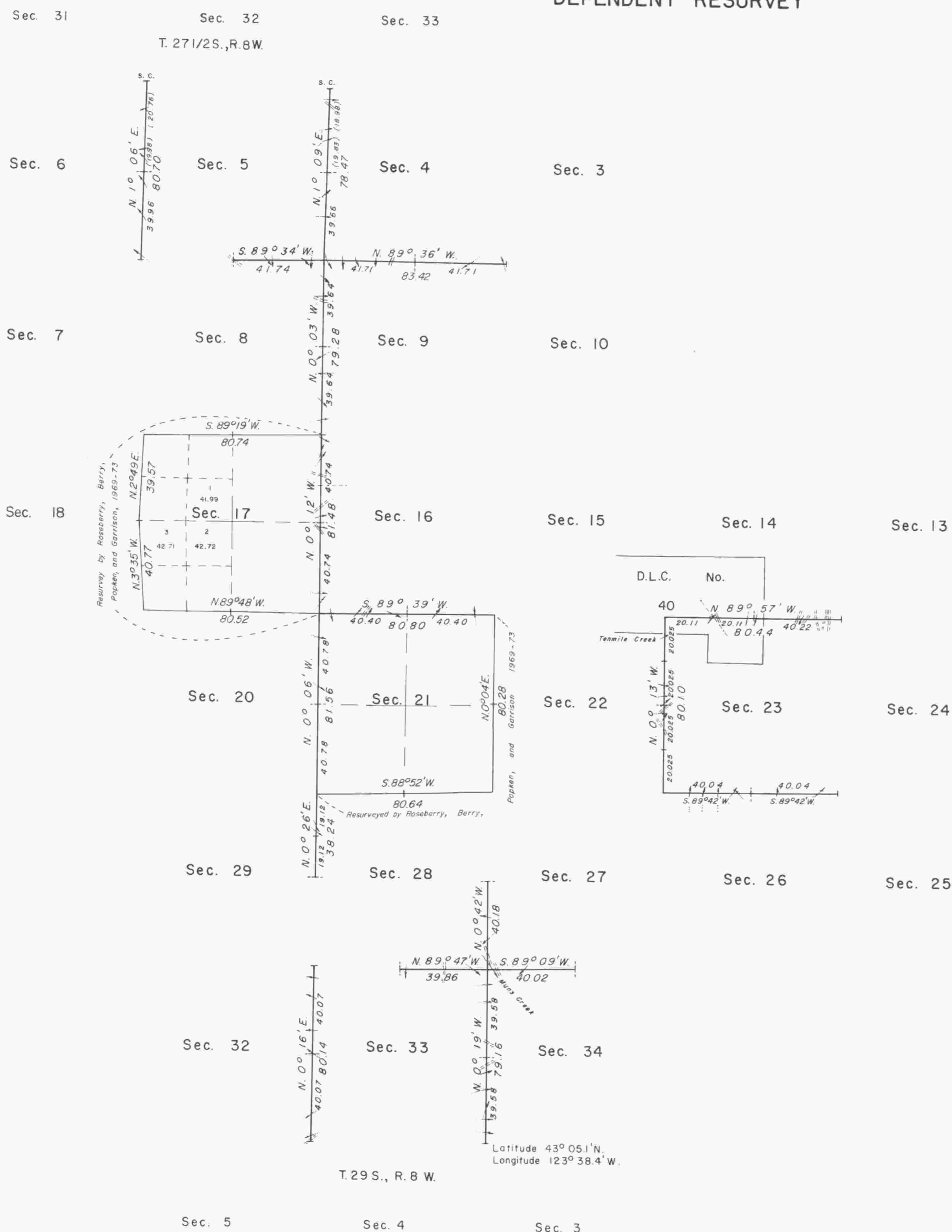


TOWNSHIP 28 SOUTH, RANGE 8 WEST, OF THE WILLAMETTE MERIDIAN, OREGON.

DEPENDENT RESURVEY



This plat represents a dependent resurvey of a portion of the subdivisional lines, T. 28 S., R. 8 W., Willamette Meridian, Oregon, designed to restore the corners in their true original locations according to the best available evidence.

Except as shown hereon, the lottings and areas are as shown on the plats approved July 7, 1856, and January 16, 1862, and accepted August 20, 1965, and February 28, 1977.

The township boundaries and a portion of the subdivisional lines were surveyed by Dennis Hathorn, in 1855.

A portion of the subdivisional lines was surveyed by Winfield S. Chapman, in 1875.

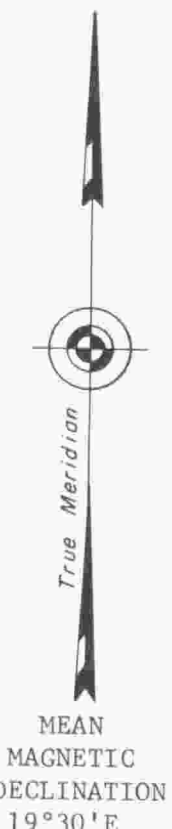
The survey of the subdivisional lines was completed by George S. Pershin, in 1875.

Certain corners within the township were rehabilitated during the survey of Township 28 South, Range 7 1/2 West, and were never entered into record, by Fred Mensch, in 1924.

A portion of the north boundary was resurveyed by C. Albert White, John M. Jelley, and James E. Jelley, in 1961.

A portion of the subdivisional lines was resurveyed by Lynn M. Roseberry, Daniel L. Berry, G. Steven Popken, and Albert J. Garrison, in 1969-73.

The resurvey was executed by James E. Jelley, Cadastral Surveyor, from May 6, 1975, to July 23, 1975, under Special Instructions dated April 3, 1975, which provide for the surveys included under Group No. 863, Oregon.



UNITED STATES DEPARTMENT OF THE INTERIOR
BUREAU OF LAND MANAGEMENT
Washington, D.C. February 22, 1978

This plat is strictly conformable to the approved field notes, and the survey, having been correctly executed in accordance with the requirements of law and the regulations of this Bureau, is hereby accepted.

For the Director

Bernard W. Halsey
Chief, Division of Cadastral Survey

"Suspension Lifted, December 15, 1989, File 9632 (OR942)."
Refer to plat accepted October 13, 1989.

"Suspended, January 8, 1987, see File 9600(OR-942)."

Timber in this area consists of fir, hemlock, cedar, oak, maple, myrtle, madrone, chinquapin, and alder.

