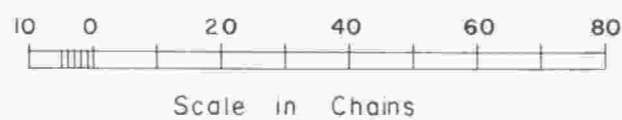
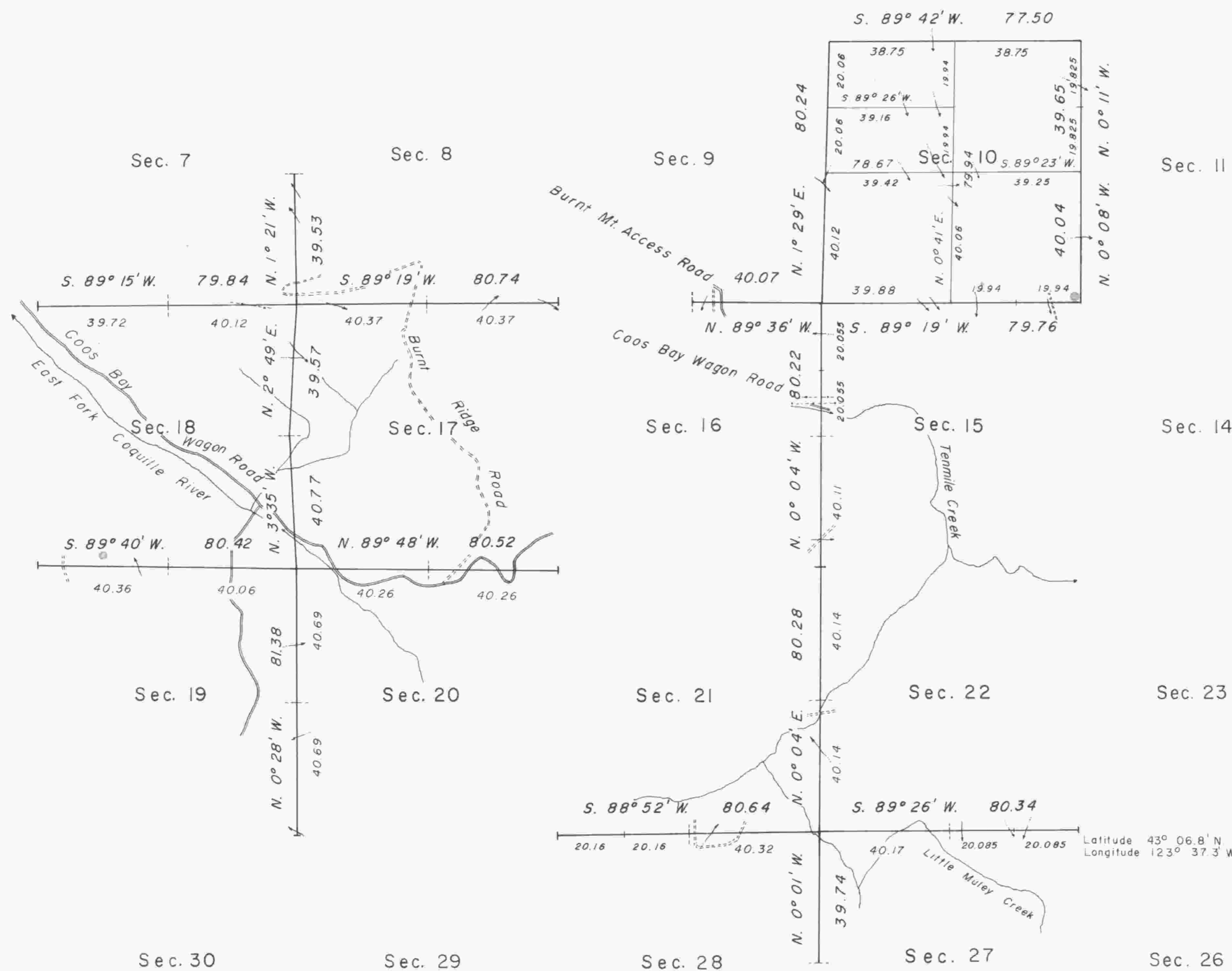


TOWNSHIP 28 SOUTH, RANGE 8 WEST, OF THE WILLAMETTE MERIDIAN, OREGON. DEPENDENT RESURVEY AND SUBDIVISION



MEAN
MAGNETIC
DECLINATION
19°10'E.



Sec. 11

This plat represents a dependent resurvey of a portion of the subdivisional lines, designed to restore the corners in their true original location according to the best available evidence, and subdivision of section 10, of T. 28 S., R. 8 W., Willamette Meridian, Oregon.

Except as indicated hereon, the lottings and areas are as shown on the plats approved July 7, 1856, December 17, 1875, and January 10, 1876.

Sec. 14

The west boundary of the township and a portion of the subdivisional lines were surveyed by Dennis Hathorn, in 1855. A portion of the subdivisional lines was surveyed by Winfield S. Chapman, in 1875. The survey of the subdivisional lines was completed by George S. Pershin, in 1875.

Sec. 23

UNITED STATES DEPARTMENT OF THE INTERIOR
BUREAU OF LAND MANAGEMENT
Washington, D.C. February 28, 1977

This plat is strictly conformable to the approved field notes, and the survey, having been correctly executed in accordance with the requirements of law and the regulations of this Bureau, is hereby accepted.

For the Director

Rogew T. Barron

Acting Chief, Division of Cadastral Survey

Timber in this area consists of fir, hemlock, cedar, yew, alder, oak and chinquapin.

TB