

TOWNSHIP 28 SOUTH, RANGE 8 WEST, OF THE WILLAMETTE MERIDIAN, OREGON.  
DEPENDENT RESURVEY AND SUBDIVISION

This plat represents a retracement and reestablishment of a portion of the south boundary of T. 28 S., R. 8 W., and the east and north boundaries of section 31, designed to restore the corners thereof in their true original positions according to the best available evidence; and, the subdivision of section 31. The lottings and areas are as shown on the plat approved July 7, 1856.

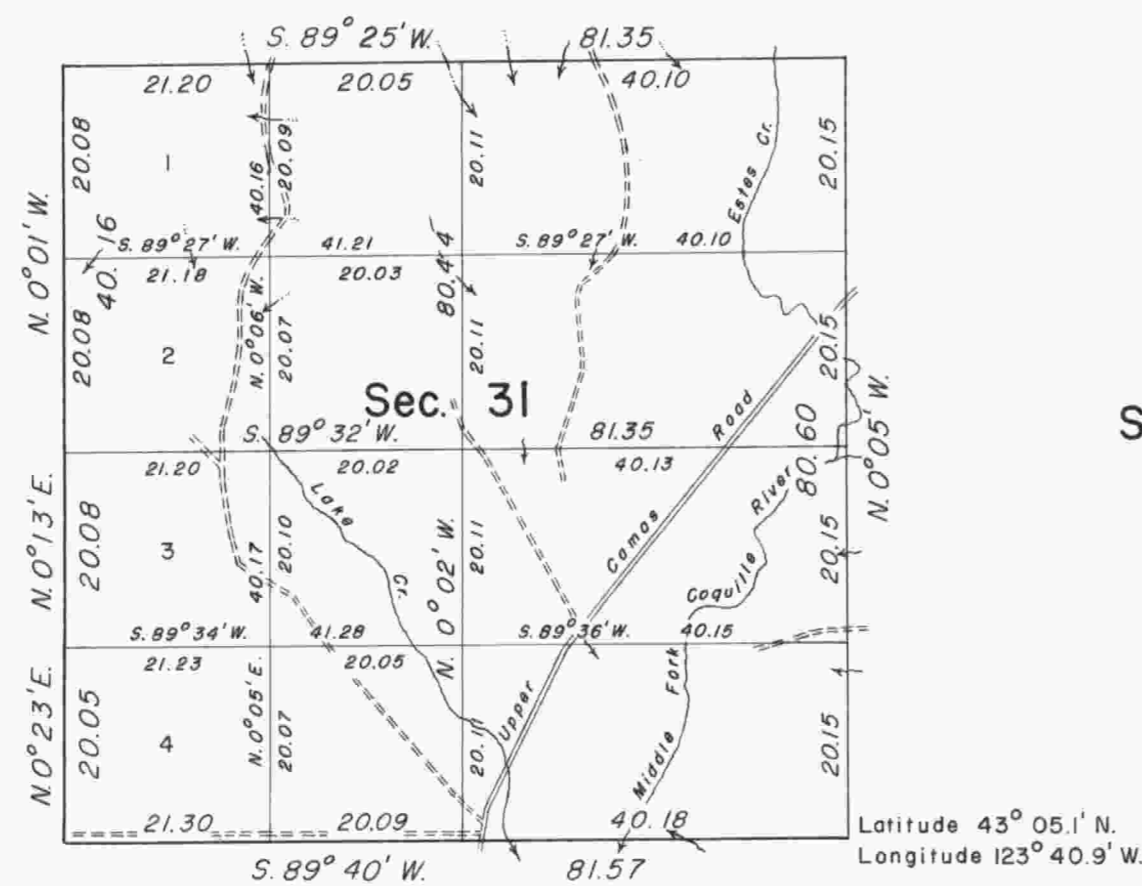
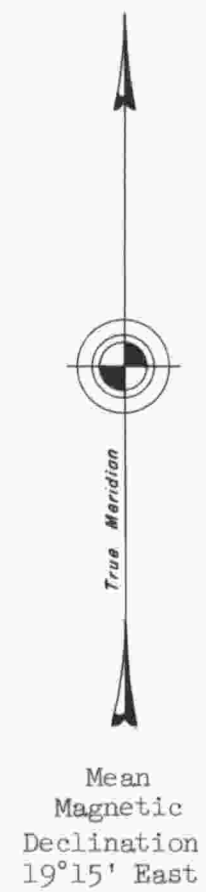
The south and west township boundaries and a portion of the subdivisional lines were surveyed by Dennis Hathorn in 1855. The south 2 miles of the west boundary were dependently resurveyed by William W. Glenn in 1959.

These surveys executed by John M. Jelley, July 10 to July 28, 1964, under Special Instructions dated June 19, 1964, for Group No. 552, Oregon.

Sec. 30

Sec. 29

Sec. 32



Area resurveyed: 649.42 Acres

UNITED STATES DEPARTMENT OF THE INTERIOR  
BUREAU OF LAND MANAGEMENT  
Washington, D. C. August 20, 1965

This plat is strictly conformable to the approved field notes, and the survey, having been correctly executed in accordance with the requirements of law and the regulations of this Bureau, is hereby accepted.

For the Director

*Clark I. Sumner*

Acting Chief, Division of Engineering

Timber in this area consists of fir, hemlock, cedar, white fir, madrone, alder, yew, maple, chinquapin, and oak.