

# TOWNSHIP 28 SOUTH, RANGE 7 WEST, OF THE WILLAMETTE MERIDIAN, OREGON

## SUPPLEMENTAL PLAT OF SECTION 21

FILED

Date: 3-17-1999 By: J.P.

This survey consists of:

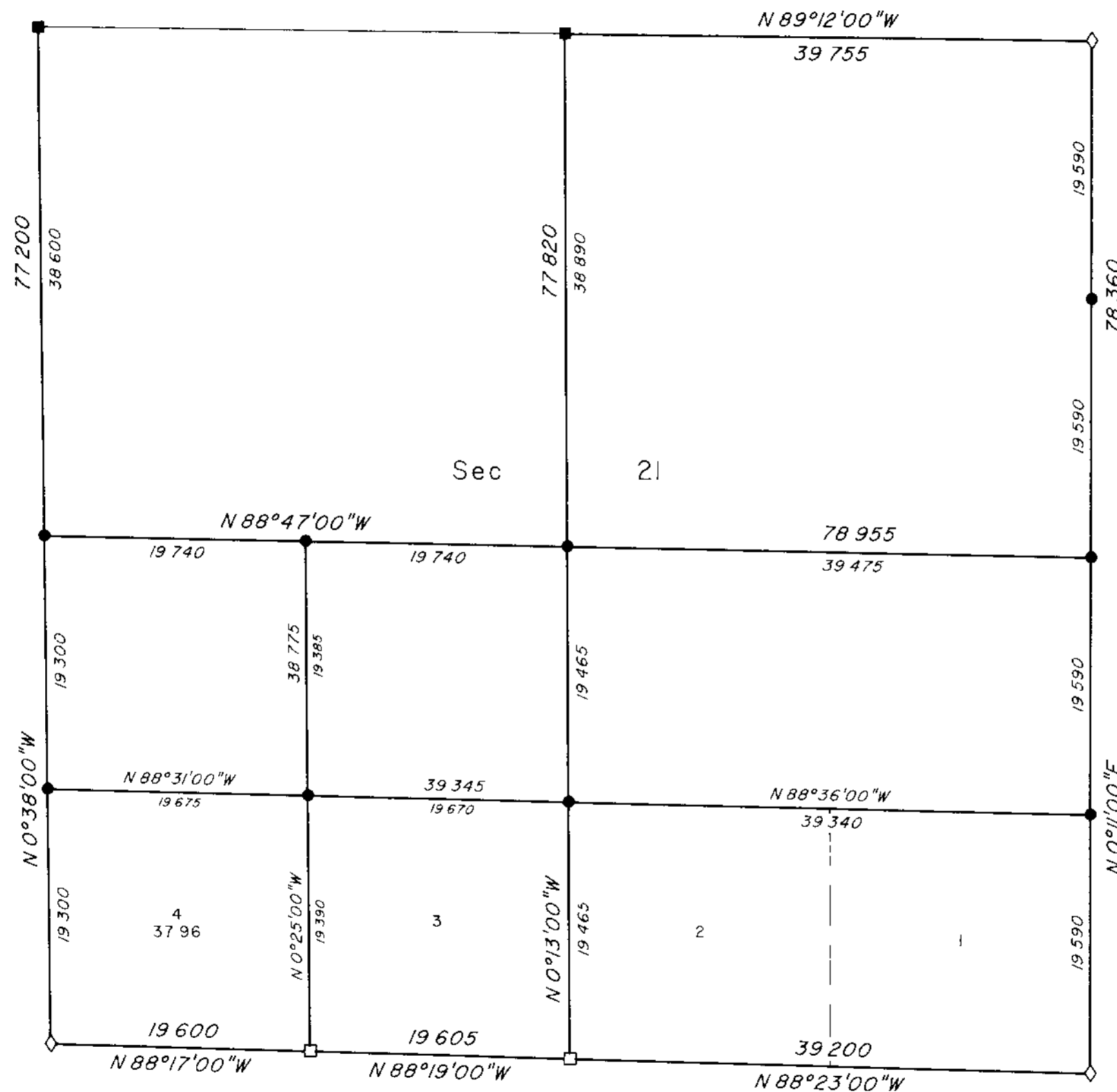
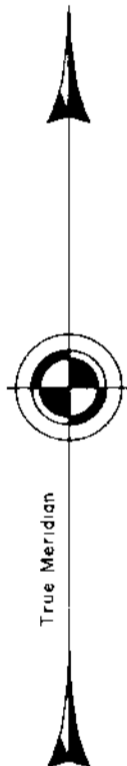
Map: \_\_\_\_\_

Narrative: \_\_\_\_\_

Corner Rpt: \_\_\_\_\_

DOUGLAS COUNTY  
SURVEYOR

This plat corrects the lotting shown on the official plat accepted November 12, 1997, which did not account for lots 1, 2, and 3, section 21, being previously returned on the plat approved March 30, 1863. This supplemental plat is authorized by memorandum from the Chief Cadastral Surveyor of Oregon, dated November 12, 1998, File 9630 (957)



LEGEND	
◇	Original corner previously remonumented
□	Corner previously established or reestablished
■	Corner previously established or reestablished, remonumented this survey
●	Corner established or reestablished this survey

UNITED STATES DEPARTMENT OF THE INTERIOR  
BUREAU OF LAND MANAGEMENT

Portland, Oregon November 20, 1998

This plat, showing amended lottings, is based upon the official records and, having been correctly prepared in accordance with the regulations of this Bureau, is hereby accepted

For the Director

*Wayne M. Gardner*  
Chief Cadastral Surveyor of Oregon

