

TOWNSHIP 28 SOUTH, RANGE 7 WEST, OF THE WILLAMETTE MERIDIAN, OREGON.
DEPENDENT RESURVEY

This plat represents a dependent resurvey of a portion of the subdivisional lines and a portion of the lines of Donation Land Claim No. 47, T. 28 S., R. 7 W., Willamette Meridian, Oregon, designed to restore the corners in their true original locations according to the best available evidence.

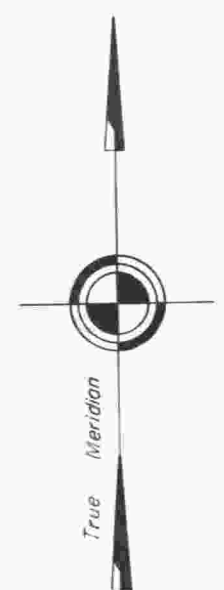
Except as indicated hereon, the lottings and areas are as shown on the plats approved March 9, 1855 and March 30, 1863.

The subdivisional lines of the township were surveyed by Nathaniel Ford, in 1854.

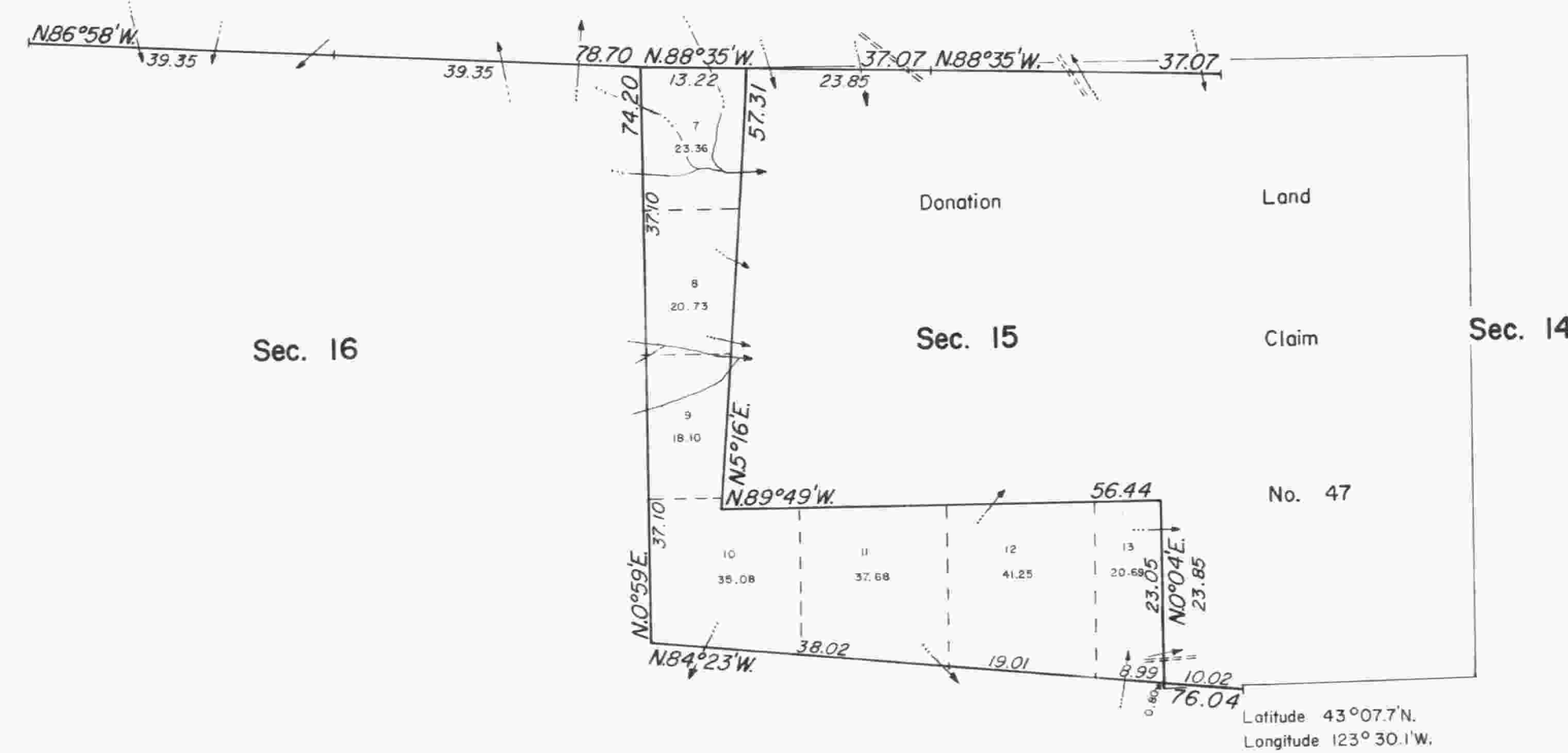
The lines of Donation Land Claim No. 47, were surveyed by Josiah A. Burnett, in 1855-56.

Certain corners within the township were rehabilitated and never entered into record during the resurvey by Fred Mensch, in 1924.

The resurvey was executed by James E. Jelley, Cadastral Surveyor, from July 24, 1975 to August 20, 1975, under Special Instructions dated July 16, 1975, which provide for the surveys included under Group No. 878, Oregon.



MEAN
MAGNETIC
DECLINATION
18°30'E.



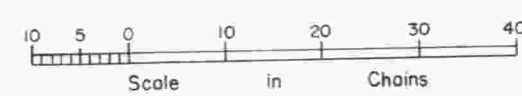
UNITED STATES DEPARTMENT OF THE INTERIOR
BUREAU OF LAND MANAGEMENT
Washington, D.C. March 3, 1978

This plat is strictly conformable to the approved field notes, and the survey, having been correctly executed in accordance with the requirements of law and the regulations of this Bureau, is hereby accepted.

For the Director

J. J. Voorhees

Acting Chief, Division of Cadastral Survey



Timber in this area consists of fir, hemlock, cedar, maple, oak, myrtle, alder, and chinquapin.