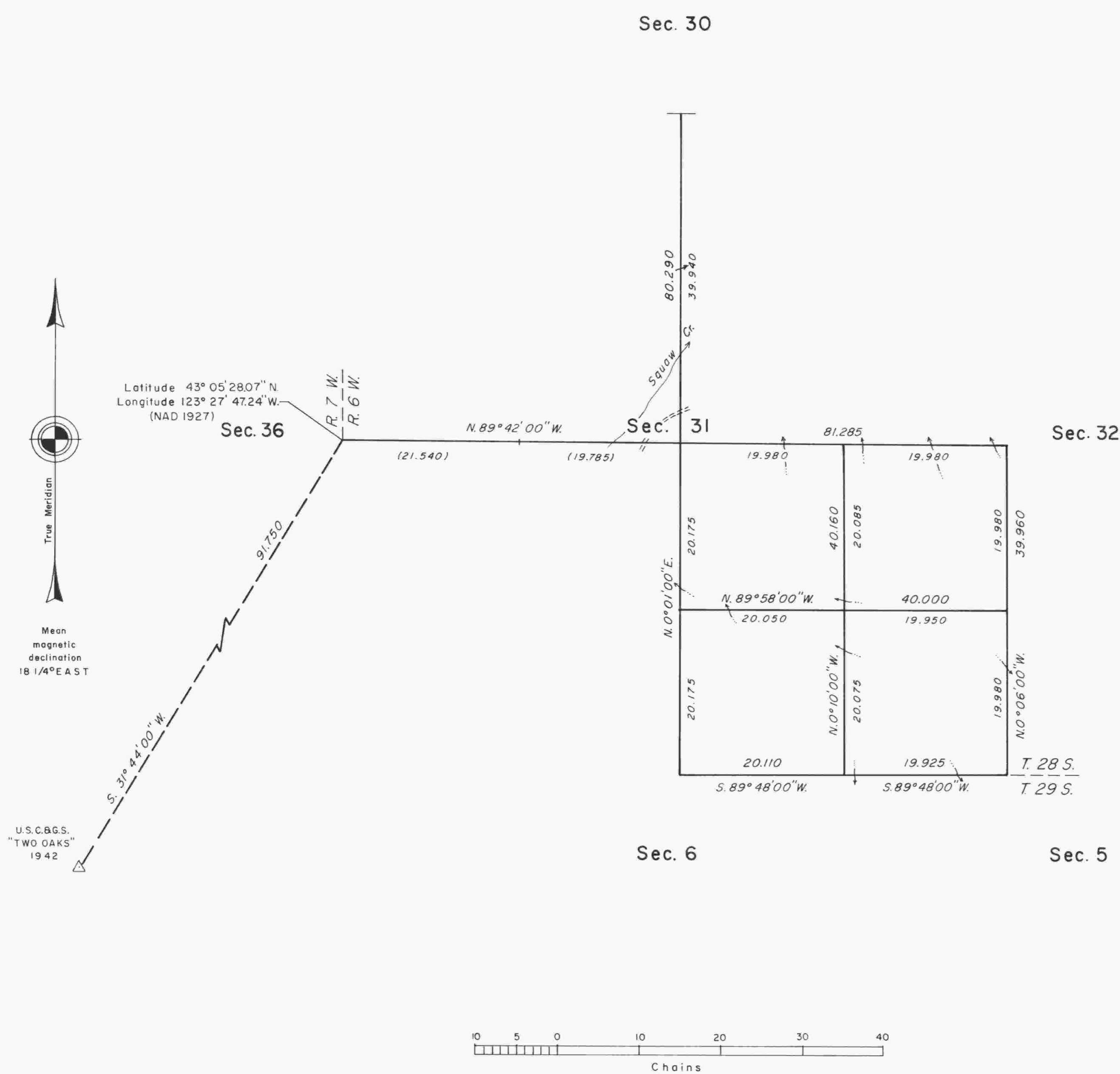


TOWNSHIP 28 SOUTH, RANGE 6 WEST, OF THE WILLAMETTE MERIDIAN, OREGON

DEPENDENT RESURVEY AND SUBDIVISION OF SECTION 31



A history of surveys is contained in the field notes.

This plat represents a dependent resurvey of a portion of the south boundary and subdivisional lines, T. 28 S., R. 6 W., Willamette Meridian, Oregon, designed to restore the corners in their true original locations according to the best available evidence, and the subdivision of section 31.

The lottings and areas are as shown on the plat approved September 9, 1853.

The survey was executed by Wayne L. Rogers, Cadastral Surveyor, beginning April 22, 1987, and completed May 14, 1987, pursuant to Special Instructions dated August 29, 1986, under Group Number 1351, Oregon.

Timber in this area consists of fir, cedar, hemlock, yew, madrone, maple, chinquapin, dogwood, oak, alder and cherry.

UNITED STATES DEPARTMENT OF THE INTERIOR
BUREAU OF LAND MANAGEMENT

Portland, Oregon February 23, 1990

This plat is strictly conformable to the approved field notes, and the survey, having been correctly executed in accordance with the requirements of law and the regulations of this Bureau, is hereby accepted.

For the Director

Chief Cadastral Surveyor of Oregon