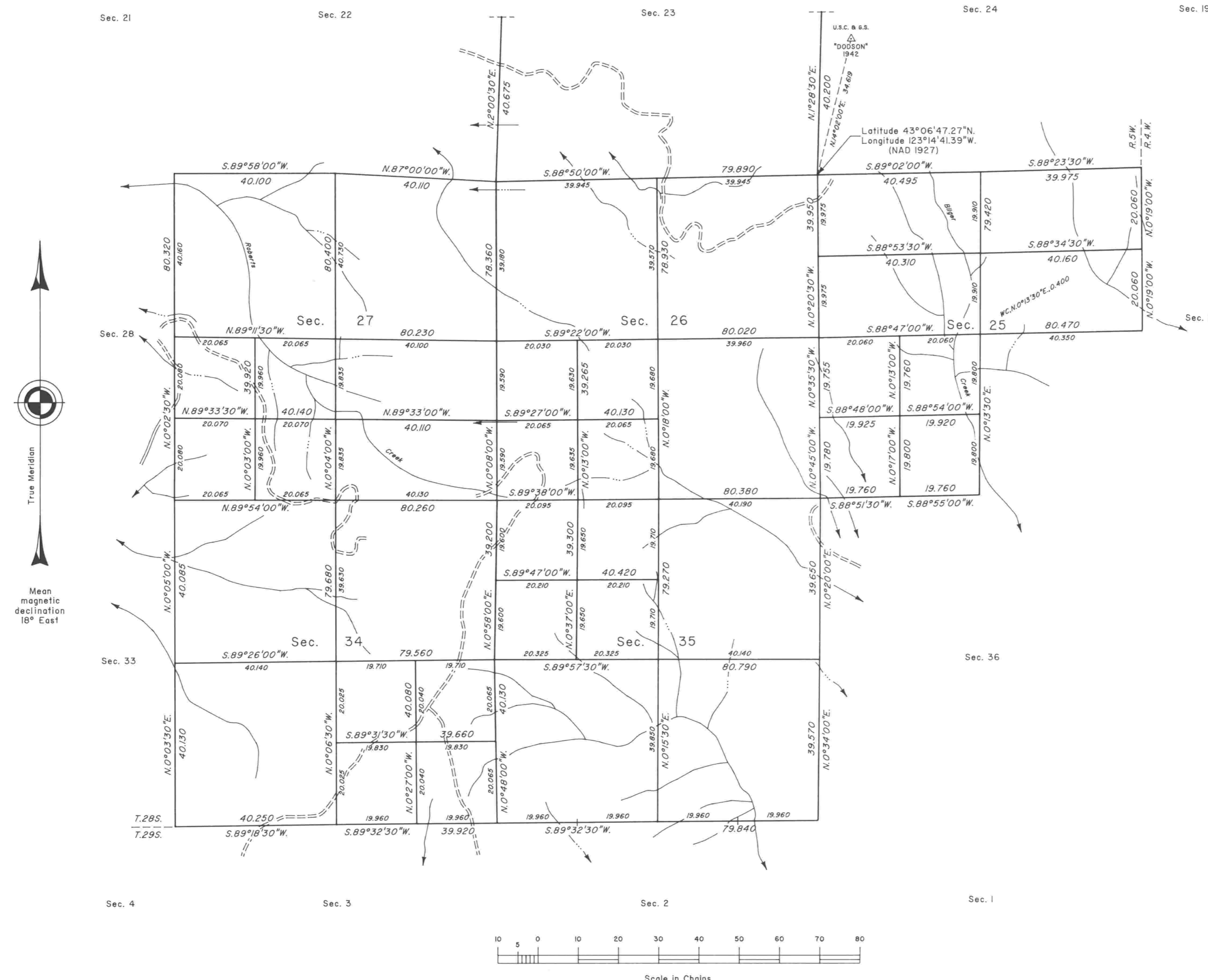


# TOWNSHIP 28 SOUTH, RANGE 5 WEST, OF THE WILLAMETTE MERIDIAN, OREGON

## DEPENDENT RESURVEY AND SUBDIVISION OF SECTIONS



A history of surveys is contained in the field notes.

This plat represents a dependent resurvey of a portion of the south and east boundaries and subdivision lines, T. 28 S., R. 5 W., Willamette Meridian, Oregon, designed to restore the corners in their true original locations according to the best available evidence, and the subdivision of sections 25, 26, 27, 34 and 35.

The lottings and areas are as shown on the plats approved September 9, 1853 and March 26, 1872.

The survey was executed by Dale T. Bedell and Boyd W. Peterson, Cadastral Surveyors, beginning April 5, 1988, and completed April 30, 1990, pursuant to Special Instructions dated November 19, 1987, and Supplemental Special Instructions dated March 31, 1988, under Group Number 1425, Oregon.

Timber in this area consists of fir, hemlock, cedar, oak, madrone, maple, pine and chinquapin.

UNITED STATES DEPARTMENT OF THE INTERIOR  
BUREAU OF LAND MANAGEMENT

Portland, Oregon January 9, 1992

This plat is strictly conformable to the approved field notes, and the survey, having been correctly executed in accordance with the requirements of law and the regulations of this Bureau, is hereby accepted.

For the Director

*Wayne M. Gardner*  
Chief Cadastral Surveyor of Oregon