

# TOWNSHIPS 27 & 28 SOUTH, RANGE 4 WEST, OF THE WILLAMETTE MERIDIAN, OREGON

## DEPENDENT RESURVEY AND SUBDIVISIONS OF SECTIONS

FILED  
 Date: 8/31/2016 By: JC  
 This survey consists of:  
 Map: T28S R04W 2016-1  
 Narrative: VOL. 58  
 Corner Rpt: PGS 23347-23363  
**DOUGLAS COUNTY**  
**SURVEYOR**

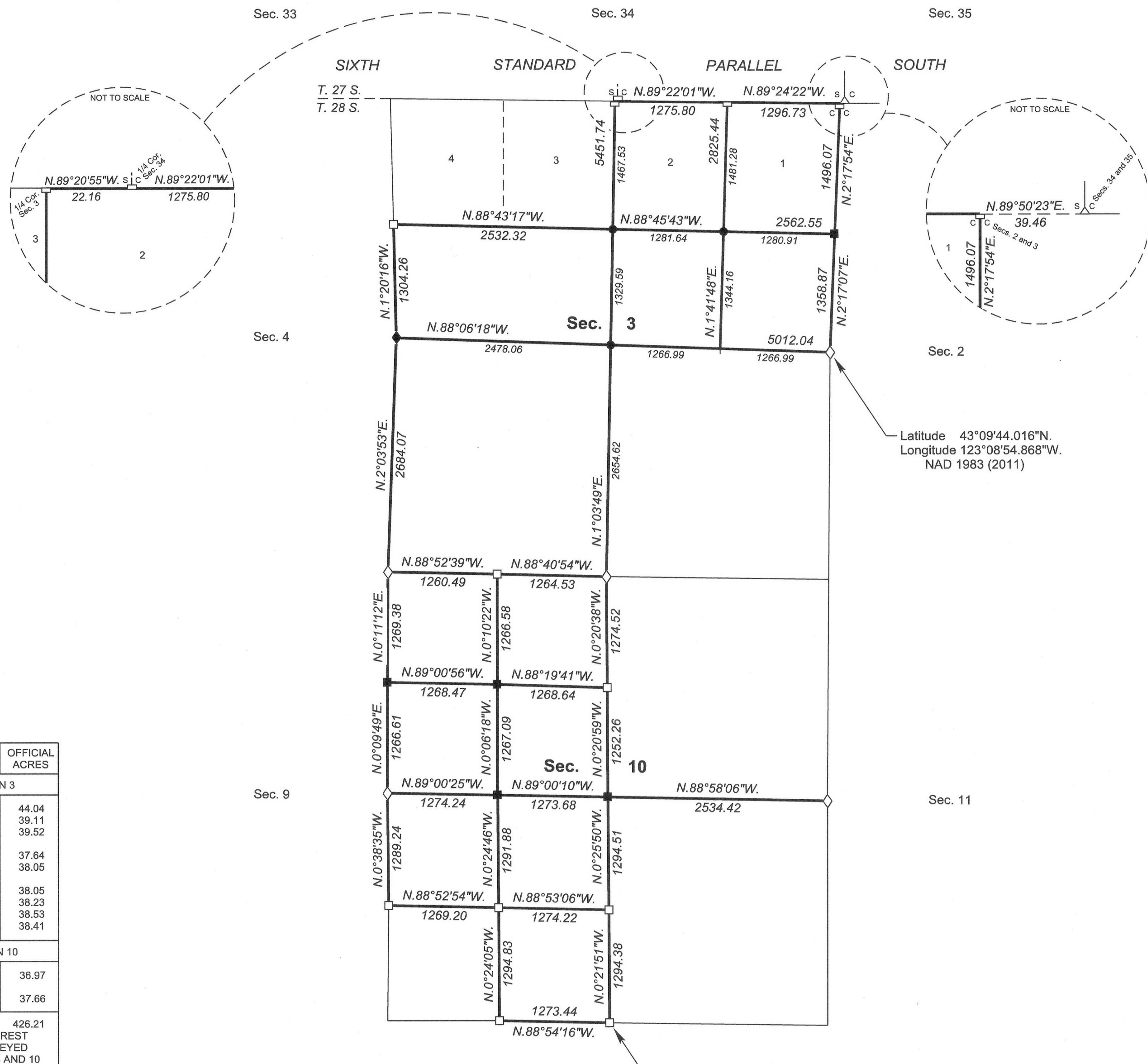
OFFICIALLY FILED: 8/29/2016

A history of surveys, corner descriptions, and other relevant information are contained in the field notes.

This plat represents the dependent resurvey of a portion of the south boundary of Township 27 South, Range 4 West (Sixth Standard Parallel South), and a portion of the subdivisional lines, Township 28 South, Range 4 West, designed to restore the corners in their true original locations according to the best available evidence, and the subdivision of sections 3 and 10, Township 28 South, Range 4 West, Willamette Meridian, Oregon.

Official areas based on the measurements of this survey have been returned for Federal interest land where indicated. Aliquot part legal subdivisions retain their aliquot characteristics and refer to precisely the same land as that which was previously identified by its original survey or description. A lot can only be subdivided by survey or supplemental plat. Except as indicated hereon, the lottings and areas are as shown on the plat approved August 11, 1881.

Survey executed by George M. Winter, Cadastral Surveyor, beginning July 30, 2013, and completed February 10, 2016, pursuant to special instructions approved July 16, 2013, and supplemental special instructions approved June 29, 2015, for Group No. 2704, Oregon.



Latitude 43°09'44.016"N.  
 Longitude 123°08'54.868"W.  
 NAD 1983 (2011)

Latitude 43°08'28.112"N.  
 Longitude 123°09'29.251"W.  
 NAD 1983 (2011)

LEGAL SUBDIVISION	OFFICIAL ACRES
<b>SECTION 3</b>	
LOT 1	44.04
SW1/4 NE1/4	39.11
SE1/4 NE1/4	39.52
SW1/4 NW1/4	37.64
SE1/4 NW1/4	38.05
NE1/4 SW1/4	38.05
NW1/4 SW1/4	38.23
SW1/4 SW1/4	38.53
SE1/4 SW1/4	38.41
<b>SECTION 10</b>	
SW1/4 NW1/4	36.97
NW1/4 SW1/4	37.66
TOTAL AREA	426.21
FEDERAL INTEREST LAND RESURVEYED IN SECTIONS 3 AND 10	

LEGEND	
◇	Original corner previously remonumented
◆	Original corner remonumented this survey
□	Corner previously established or reestablished
■	Corner previously established or reestablished; remonumented this survey
●	Corner established or reestablished this survey
+	Corner point calculated, no monument set

UNITED STATES DEPARTMENT OF THE INTERIOR  
 BUREAU OF LAND MANAGEMENT  
 Portland, Oregon

This plat is strictly conformable to the approved field notes, and the survey, having been correctly executed in accordance with the requirements of law and the regulations of this Bureau, is hereby accepted.

For the Director  
*Mary J. M. Hartzel*  
 Chief Cadastral Surveyor of Oregon

July 1, 2016  
 Date

