

TOWNSHIP 28 SOUTH, RANGE 4 WEST, OF THE WILLAMETTE MERIDIAN, OREGON
 DEPENDENT RESURVEY AND SUBDIVISION OF SECTIONS 19 AND 29

FILED
 Date: 9/21/2015 By: JC
 This survey consists of:
 Map: T28-4W 2015-1
 Narrative: VOL 58 PAGE
 Corner Rpt: 23226-23242

DOUGLAS COUNTY
 SURVEYOR

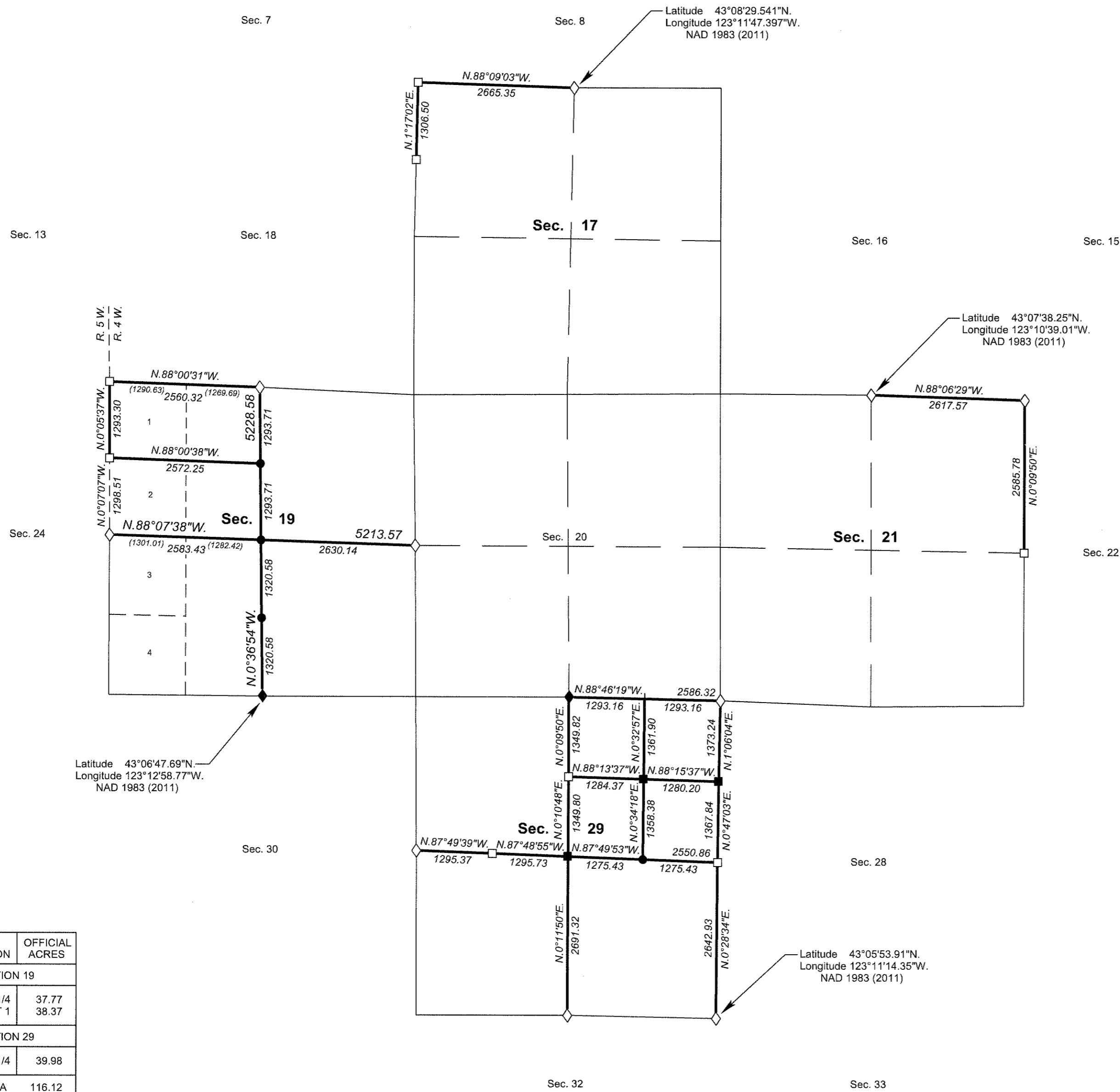
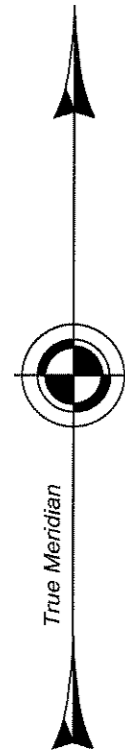
A history of surveys, corner descriptions, and other relevant information are contained in the field notes.

This plat represents the dependent resurvey of a portion of the west boundary and subdivisional lines, designed to restore the corners in their true original locations according to the best available evidence, and the subdivision of sections 19 and 29, Township 28 South, Range 4 West, Willamette Meridian, Oregon.

Official areas based on the measurements of this survey have been returned for Federal interest land where indicated. Aliquot part legal subdivisions retain their aliquot characteristics and refer to precisely the same land as that which was previously identified by its original survey or description. A lot can only be subdivided by survey or supplemental plat. Except as indicated hereon, the lottings and areas are as shown on the plat approved August 11, 1881.

Survey executed by George M. Winter and A. Bert Skeesick, Cadastral Surveyors, beginning November 5, 2013, and completed October 14, 2014, pursuant to special instructions approved October 24, 2013, and supplemental special instructions approved February 19, 2014, for Group No. 2729, Oregon.

OFFICIALLY FILED: 7/17/2015



LEGAL SUBDIVISION	OFFICIAL ACRES
SECTION 19	
NE1/4 NW1/4 LOT 1	37.77 38.37
SECTION 29	
SE1/4 NE1/4	39.98
TOTAL AREA FEDERAL INTEREST LAND RESURVEYED IN SECTIONS 19 AND 29	116.12

LEGEND	
◇	Original corner previously remonumented
◆	Original corner remonumented this survey
□	Corner previously established or reestablished
■	Corner previously established or reestablished; remonumented this survey
●	Corner established or reestablished this survey
+	Corner point calculated, no monument set

UNITED STATES DEPARTMENT OF THE INTERIOR
 BUREAU OF LAND MANAGEMENT

Portland, Oregon

This plat is strictly conformable to the approved field notes, and the survey, having been correctly executed in accordance with the requirements of law and the regulations of this Bureau, is hereby accepted.

For the Director
Mary J. M. Hartzel
 Chief Cadastral Surveyor of Oregon

May 15, 2015
 Date

