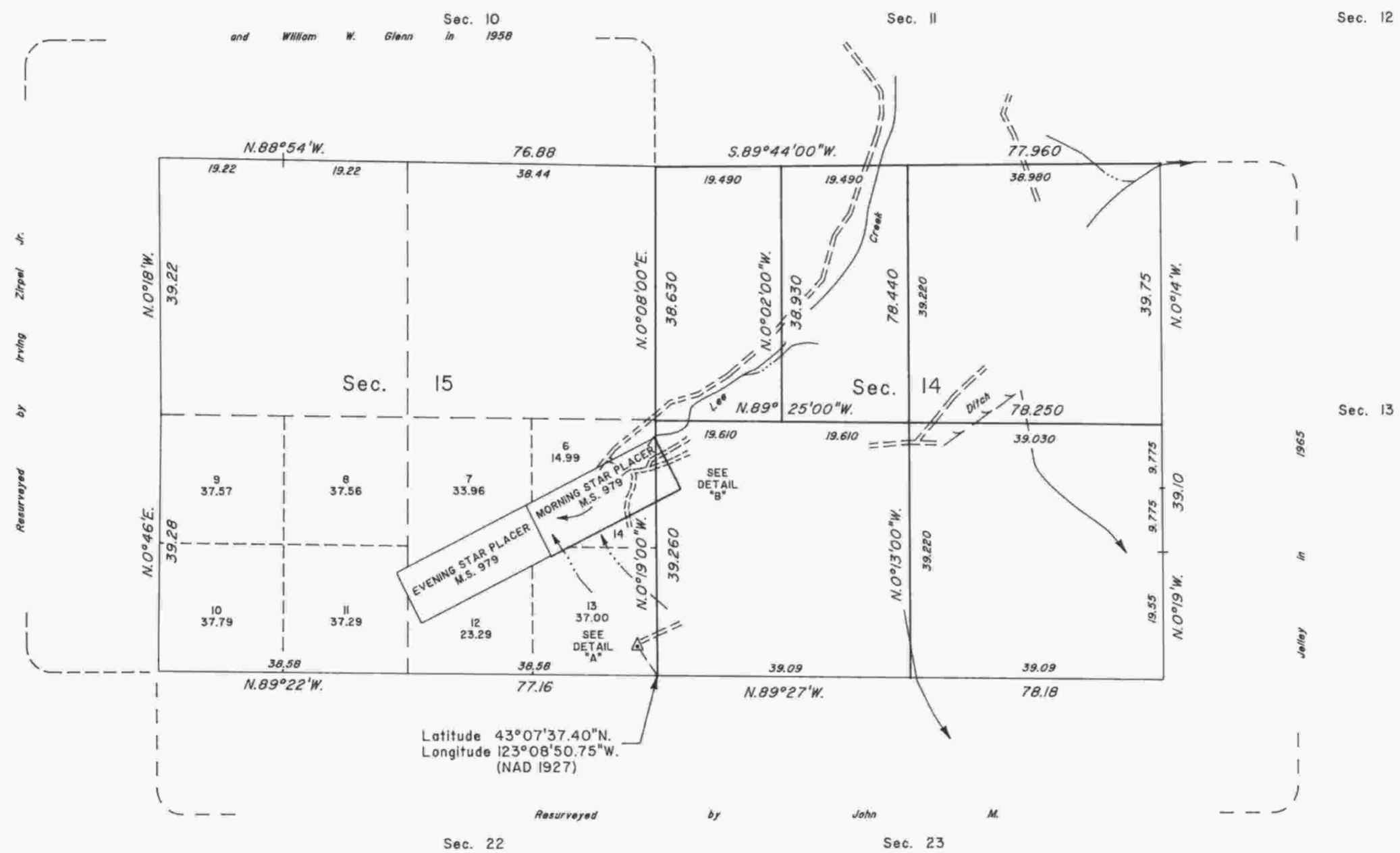


TOWNSHIP 28 SOUTH, RANGE 4 WEST, OF THE WILLAMETTE MERIDIAN, OREGON

DEPENDENT RESURVEY AND SUBDIVISION OF SECTION 14



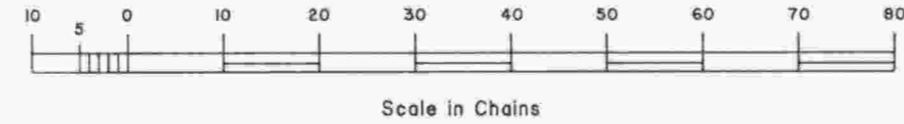
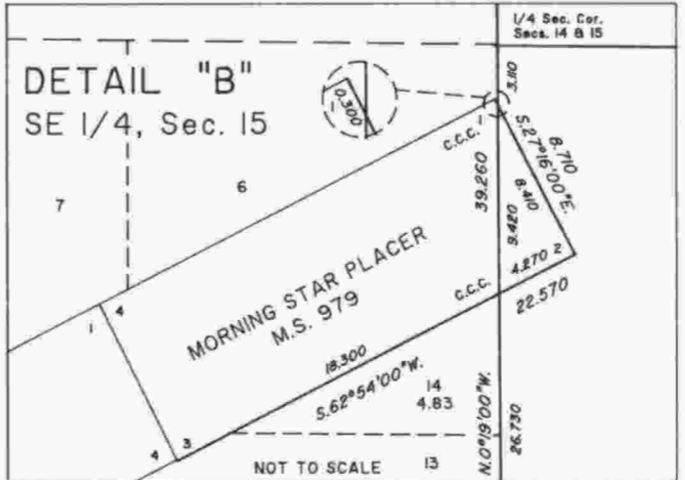
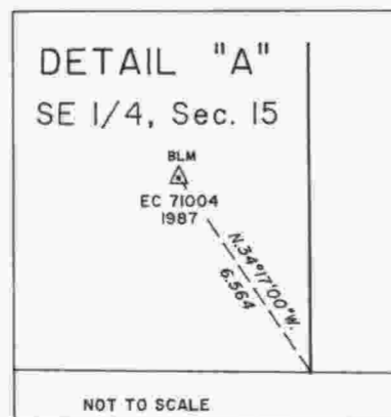
A history of surveys is contained in the field notes.

This plat represents a dependent resurvey of a portion of the subdivision lines, and a portion of the boundaries of Mineral Survey No. 979, T. 28 S., R. 4 W., Willamette Meridian, Oregon, designed to restore the corners in their true original locations according to the best available evidence, and the subdivision of section 14.

Except as shown hereon, the lottings and areas are as shown on the plat approved August 11, 1881.

The survey was executed by Dale T. Bedell and Wayne L. Rogers, Cadastral Surveyors, beginning September 28, 1987, and completed January 30, 1991, pursuant to Special Instructions dated August 10, 1987, and Supplemental Special Instructions dated August 2, 1990, under Group Number 1398, Oregon.

Timber in this area consists of fir, hemlock, cedar, pine, yew, maple, chinquapin, oak, madrone and alder.



UNITED STATES DEPARTMENT OF THE INTERIOR
BUREAU OF LAND MANAGEMENT

Portland, Oregon December 31, 1991

This plat is strictly conformable to the approved field notes, and the survey, having been correctly executed in accordance with the requirements of law and the regulations of this Bureau, is hereby accepted.

For the Director

Wayne M. Gardner
Chief Cadastral Surveyor of Oregon