

TOWNSHIP 28 SOUTH, RANGE 4 WEST, OF THE WILLAMETTE MERIDIAN, OREGON.
DEPENDENT RESURVEY

This plat represents a dependent resurvey of a portion of the west boundary and a portion of the subdivisional lines, T. 28 S., R. 4 W., Willamette Meridian, Oregon, designed to restore the corners in their true original locations according to the best available evidence.

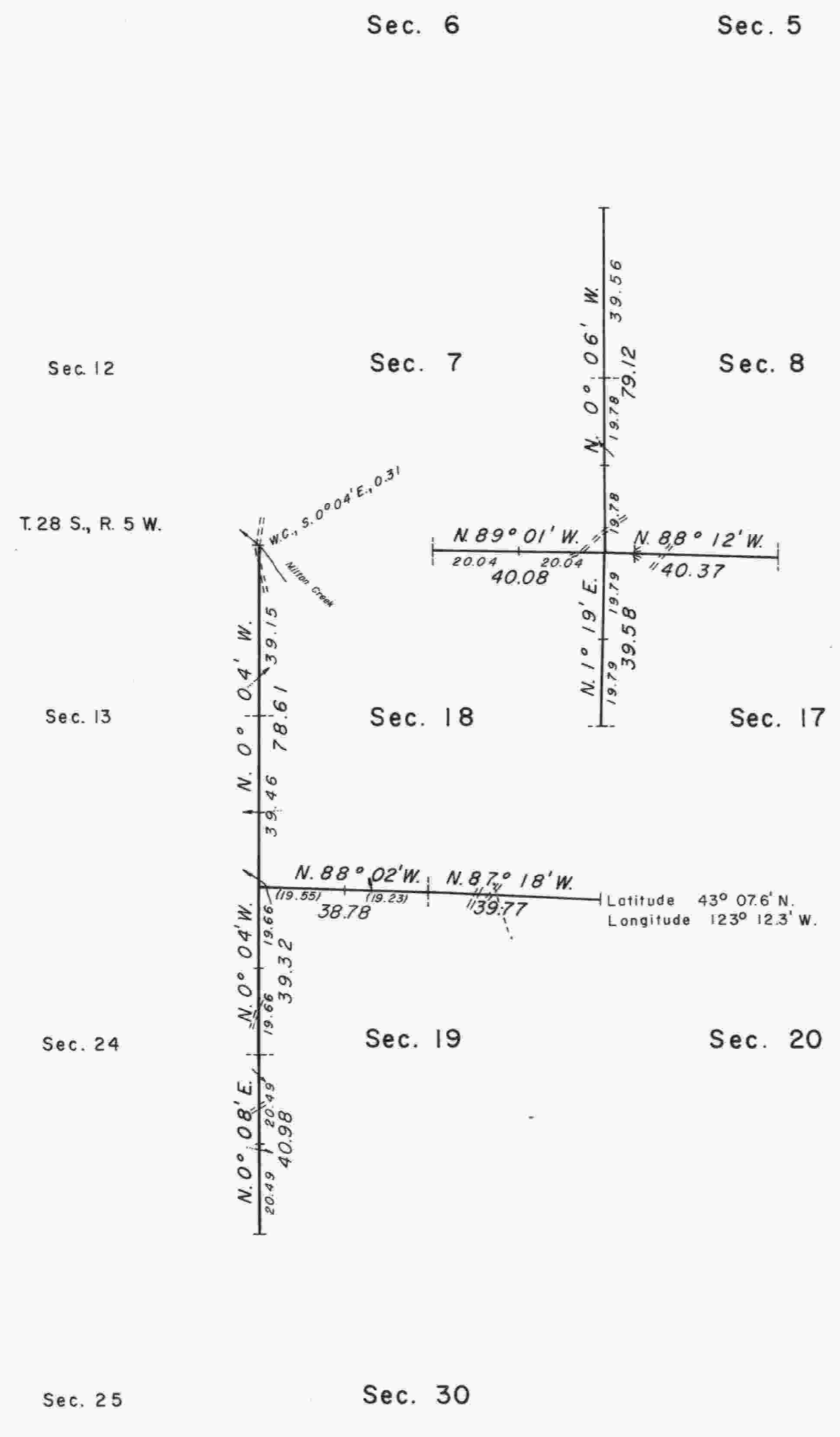
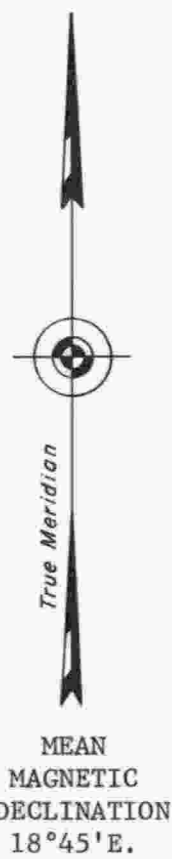
The west boundary was surveyed by James E. Freeman, in 1851.

The west boundary was retraced and a portion of the subdivisional lines was surveyed by William H. Byars, in 1881.

A portion of the subdivisional lines was resurveyed by Lynn M. Roseberry, in 1967.

Survey executed by G. Steven Popken, Cadastral Surveyor, from June 6, 1974 to July 17, 1974, under Special Instructions dated May 7, 1974, which provided for the surveys included under Group No. 837, Oregon.

A portion of the subdivisional lines was resurveyed by Irving Zirpel, Jr., and William W. Glenn, in 1958.



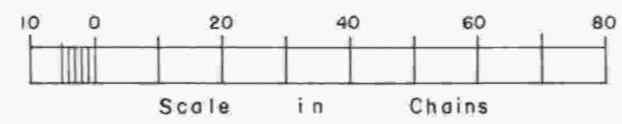
Latitude 43° 07.6' N.
Longitude 123° 12.3' W.

UNITED STATES DEPARTMENT OF THE INTERIOR
BUREAU OF LAND MANAGEMENT
Washington, D.C. February 13, 1978

This plat is strictly conformable to the approved field notes, and the survey, having been correctly executed in accordance with the requirements of law and the regulations of this Bureau, is hereby accepted.

For the Director

Acting Chief, Division of Cadastral Survey



Timber in this area consists of fir, hemlock, cedar, oak, madrone, and chinquapin.