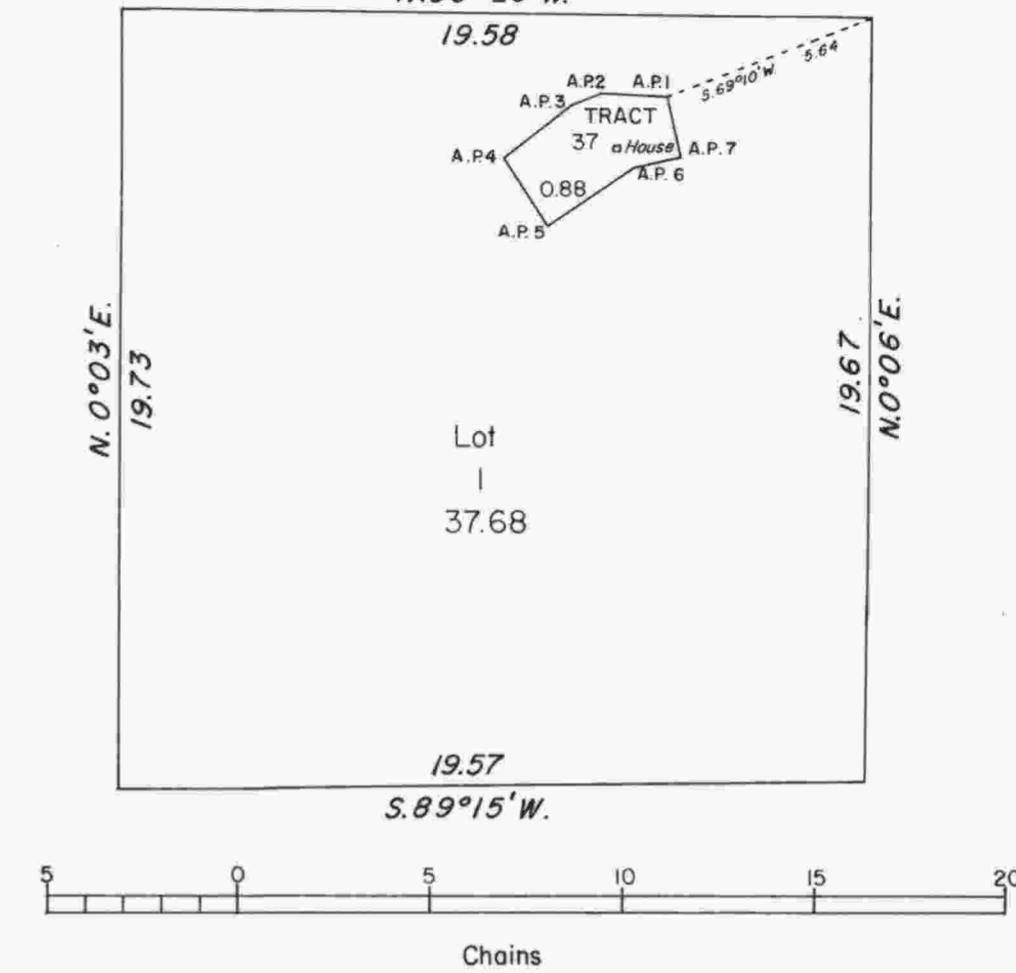


# TOWNSHIP 28 SOUTH, RANGE 4 WEST, OF THE WILLAMETTE MERIDIAN, OREGON.

DEPENDENT RESURVEY AND SUBDIVISION OF SECTION

## ENLARGED DIAGRAM

NW 1/4 SE 1/4 of Section 13  
N. 89° 26' W.



### TRACT 37 BOUNDARY

From	To	Course	Distance
A.P. 1	A.P. 2	N. 88° 00' W.	1.72
A.P. 2	A.P. 3	S. 89° 00' W.	0.85
A.P. 3	A.P. 4	S. 82° 00' W.	2.20
A.P. 4	A.P. 5	S. 33° 00' E.	2.05
A.P. 5	A.P. 6	N. 56° 00' E.	2.60
A.P. 6	A.P. 7	N. 79° 00' E.	1.40
A.P. 7	A.P. 1	N. 12° 55' W.	1.637

This plat represents a retracement and reestablishment of a portion of the east boundary, a portion of the subdivisional lines, designed to restore the corners in their true original locations according to the best available evidence; the subdivision of section 13, and the survey of Tract 37. Except as new or modified vacant subdivisions are shown hereon, the lottings and areas are as shown on the plat approved August 11, 1881.

The east boundary and subdivisional lines were surveyed by William H. Byars in 1881, portions of the east boundary were retraced by William N. Gibb in 1910, a portion of the subdivisional lines were resurveyed in 1958 by Irving Zirpel, Jr., and William W. Glenn.

Survey executed by John M. Jelley, Cadastral Surveyor, June 21 to July 19, 1965, under Special Instructions dated April 16, 1965, which provide for the surveys included under Group No. 570, Oregon.

UNITED STATES DEPARTMENT OF THE INTERIOR  
BUREAU OF LAND MANAGEMENT  
Washington, D. C. May 10, 1967

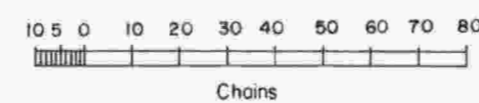
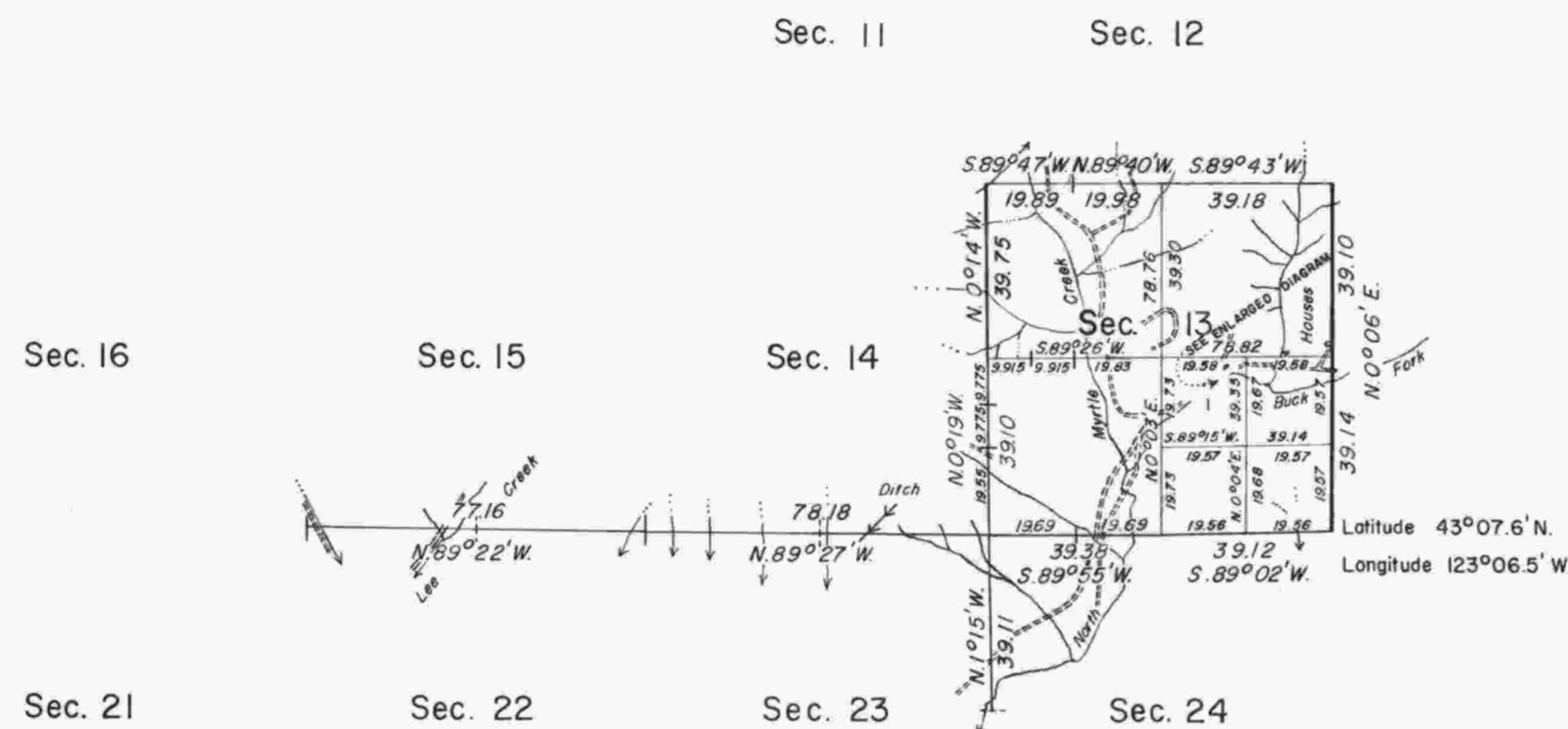
This plat is strictly conformable to the approved field notes, and the survey, having been correctly executed in accordance with the requirements of law and the regulations of this Bureau, is hereby accepted.

For the Director

*Ed. J. Hamilton*  
Chief, Division of Engineering



Mean  
Magnetic  
Declination  
19° 45' East



Area resurveyed: 638.56 Acres

Timber in this area consists of Douglas fir, white fir, hemlock, cedar, yew, madrone, maple, chinquapin, oak, and dogwood.