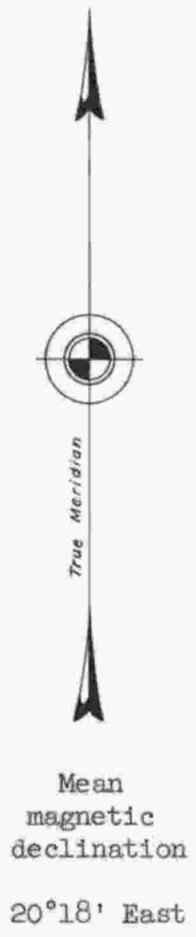
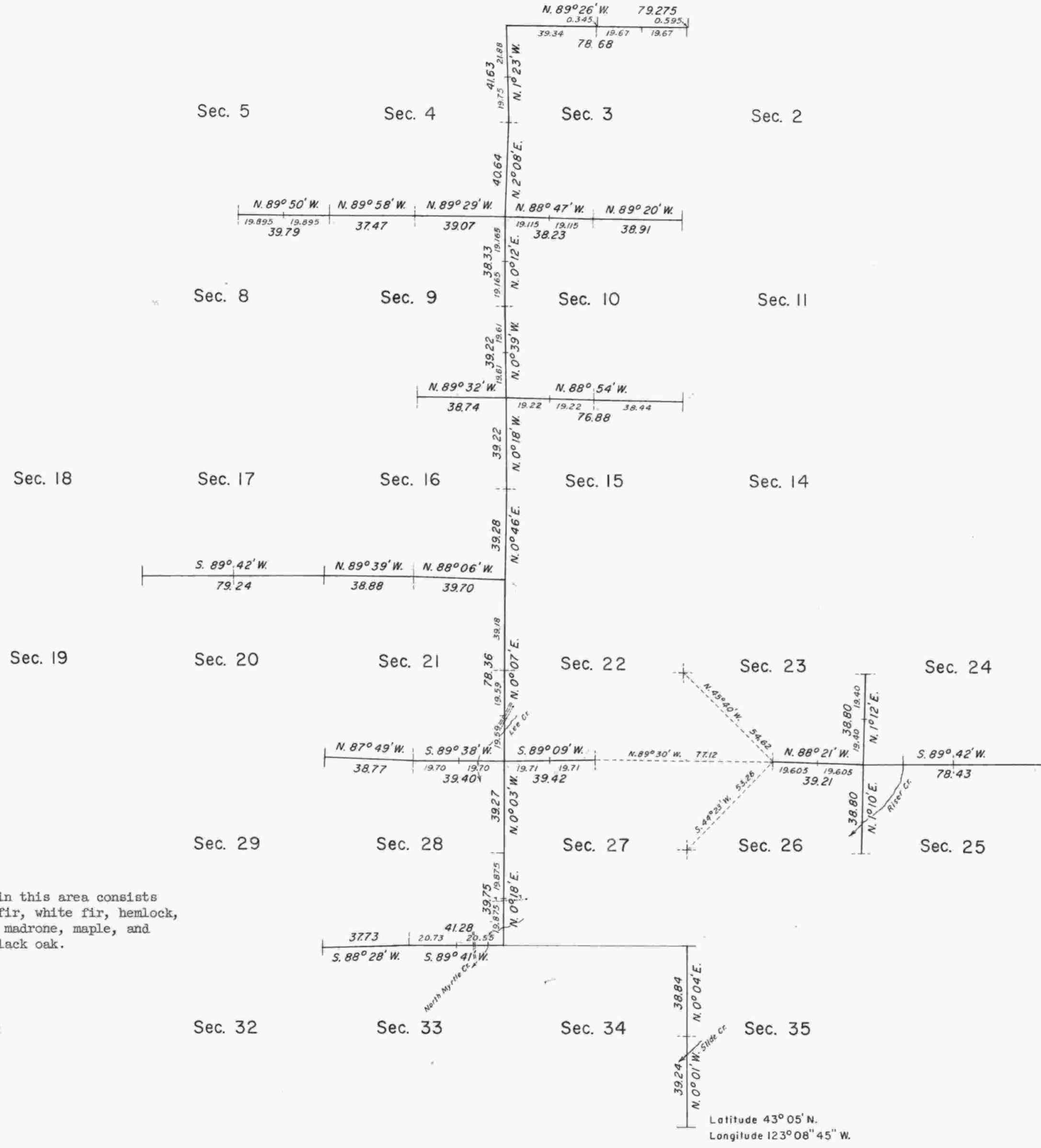


TOWNSHIP 28 SOUTH, RANGE 4 WEST, OF THE WILLAMETTE MERIDIAN, OREGON. DEPENDENT RESURVEY

Sec. 33 Sec. 34 Sec. 35
SIXTH STANDARD PARALLEL SOUTH



Timber in this area consists of Douglas fir, white fir, hemlock, cedar, yew, madrone, maple, and white and black oak.



Latitude 43° 05' N.
Longitude 123° 08' 45" W.

This plat represents a retracement and reestablishment of a portion of the 6th Standard Parallel South, south boundary of T. 27 S., R. 4 W., and a portion of the subdivisional lines of T. 28 S., R. 4 W., designed to restore the corners in their true original location according to the best available evidence.

The north, east, and south boundaries surveyed by Nathaniel Ford in 1854.

The north boundary, 6th Standard Parallel South, resurveyed by Addison R. Flint in 1855.

The north boundary retraced and the south and east boundaries and subdivisional lines surveyed by William H. Byars in 1861.

A portion of the east boundary retraced by William N. Gibb in 1910.

Dependent resurvey of a portion of the 6th Standard Parallel South, south boundary of T. 27 S., R. 4 W., and a portion of the subdivisional lines of T. 28 S., R. 4 W., executed by Irving Zirpel, Jr. and William W. Glenn, August 12 to September 11, 1958, under special instructions dated August 29, 1957, which provide for the surveys included under Group 352, Oregon.

UNITED STATES DEPARTMENT OF THE INTERIOR
BUREAU OF LAND MANAGEMENT
Washington, D. C. August 18, 1959

This plat is strictly conformable to the approved field notes, and the survey, having been correctly executed in accordance with the requirements of law and the regulations of this Bureau, is hereby accepted.

For the Director
Carl G. Harrington
Cadastral Engineering Staff Officer