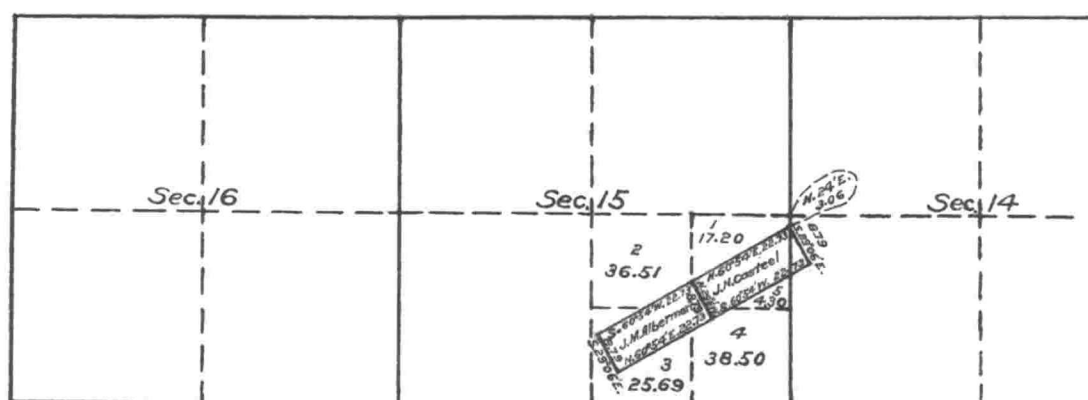


Township N<sup>o</sup> 28 South Range N<sup>o</sup> 4 West of the Willamette Meridian, Oregon.



The above Tracing showing change in areas and lottings in Sections 15, Tp. 28 S. R. 4 W. Will. Mer. Oregon, consequent upon plotting segregation surveys made by A.C. McDonald under instructions contained in Commissioner's Letter 'N' dated April 15th, 1897 to the Register and Receiver of the U.S. Land Office at Roseburg Oregon is strictly conformable to the field notes of the survey thereof on file in this Office which have been examined and approved and that it properly describes the land to be segregated in accordance with Commissioner's Letter 'N' dated November 27, 1897.

Surveyor General's Office }  
Portland, Oregon, July 30, 1898

(Signed)

Robert A. Habersham  
Sur<sup>t</sup> Genl. for Oregon.

See Book No. 43  
Mineral Surveys  
p-25-35

I certify the above to be a correct copy of the original tracing on file in this office.  
U.S. Surveyor General's Office }  
Portland, Oregon, Dec. 17, 1921

Wesley W. Cairness  
Surveyor General of Oregon

0 10 20 40 80

Scale 40 Chains to an inch

Mean Magnetic Declination

Surveys Designated	By Whom Surveyed	Group		Amount of Surveys			When Surveyed	
		No.	Date	Mls.	chs.	lks.	Begun	Completed

The above map of Township No. \_\_\_\_\_ Range No. \_\_\_\_\_ of the \_\_\_\_\_ Meridian \_\_\_\_\_ is strictly conformable to the field notes of the survey thereof on file in this office, which have been examined and approved.

U. S. Surveyor General's Office.

Surveyor General.